

A. C. & K. ELLIS
2-20-01
ORV. 877.P. 748
1567AC (F-2-392)

B. K.L. MCGUGIN ETAL
2-20-01
ORV. 877.P. 752
(1.6763AC.)
23.6147AC. TOTAL

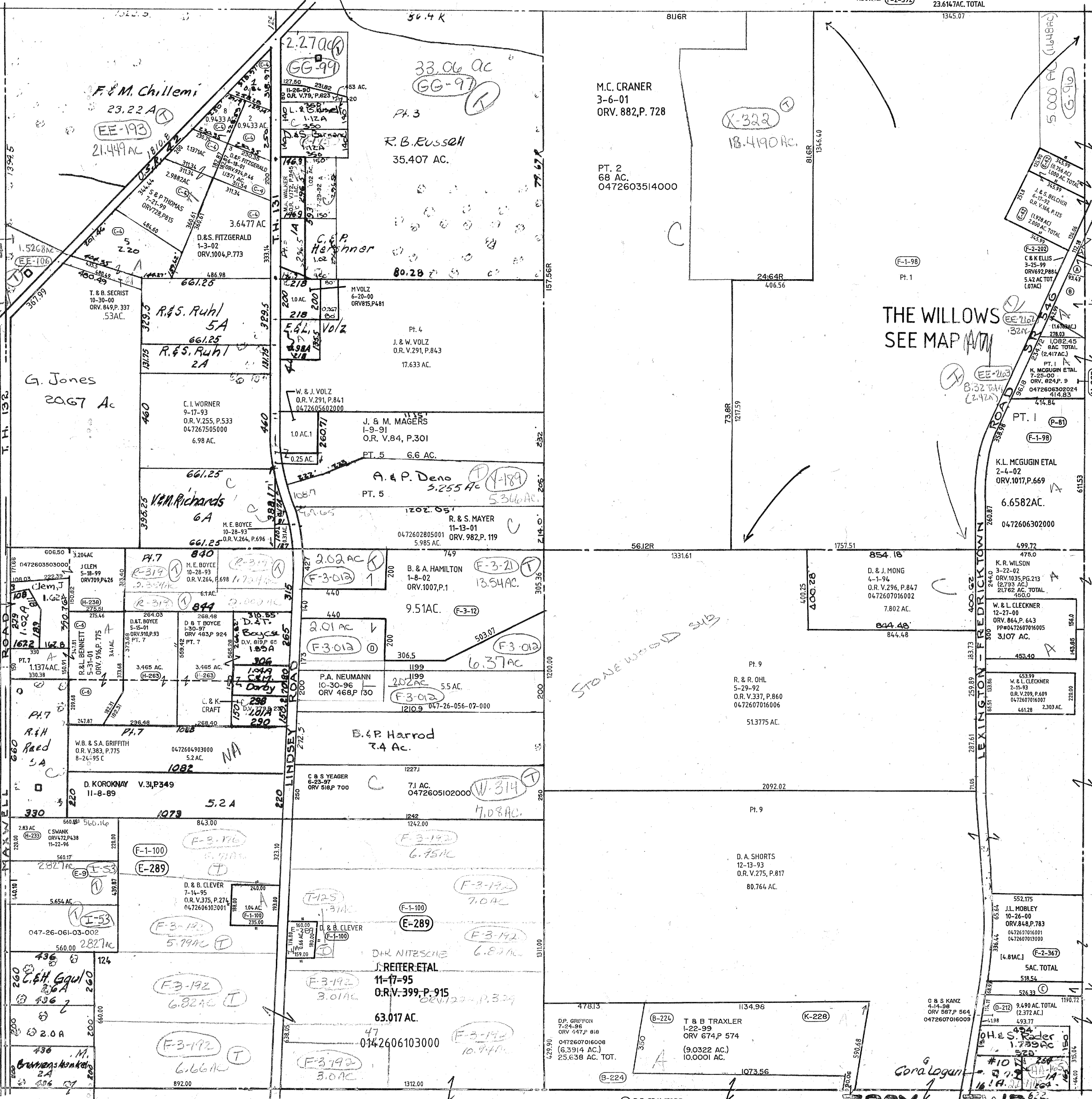
(2) S. & P. THOMAS
11-2-93
O.R.V. 266, P. 224
0472607118002

(8) K. & T. LIPSCOMB
11-28-94
O.R.V. 340, P. 568
0472607118002

(N-50)
1.5244
(N-7)
10025

J. & T. Clem

C & B LOGAN
5-15-95
ORV364, P84



HILLS OF LEXINGTON
PLAT VOL. 24, P. 137

(D) P.A. NEUMANN
10-7-96
ORV. 463.P. 525
6.89AC.

Twp. 20-R.19

(C) D.E. CRAWFORD
4-17-01
ORV. 899.P. 404
20.535AC. TOTAL
(.933AC.)
0472607316001

TROY TWP.
SEC. 26

Cora Logan

7-9