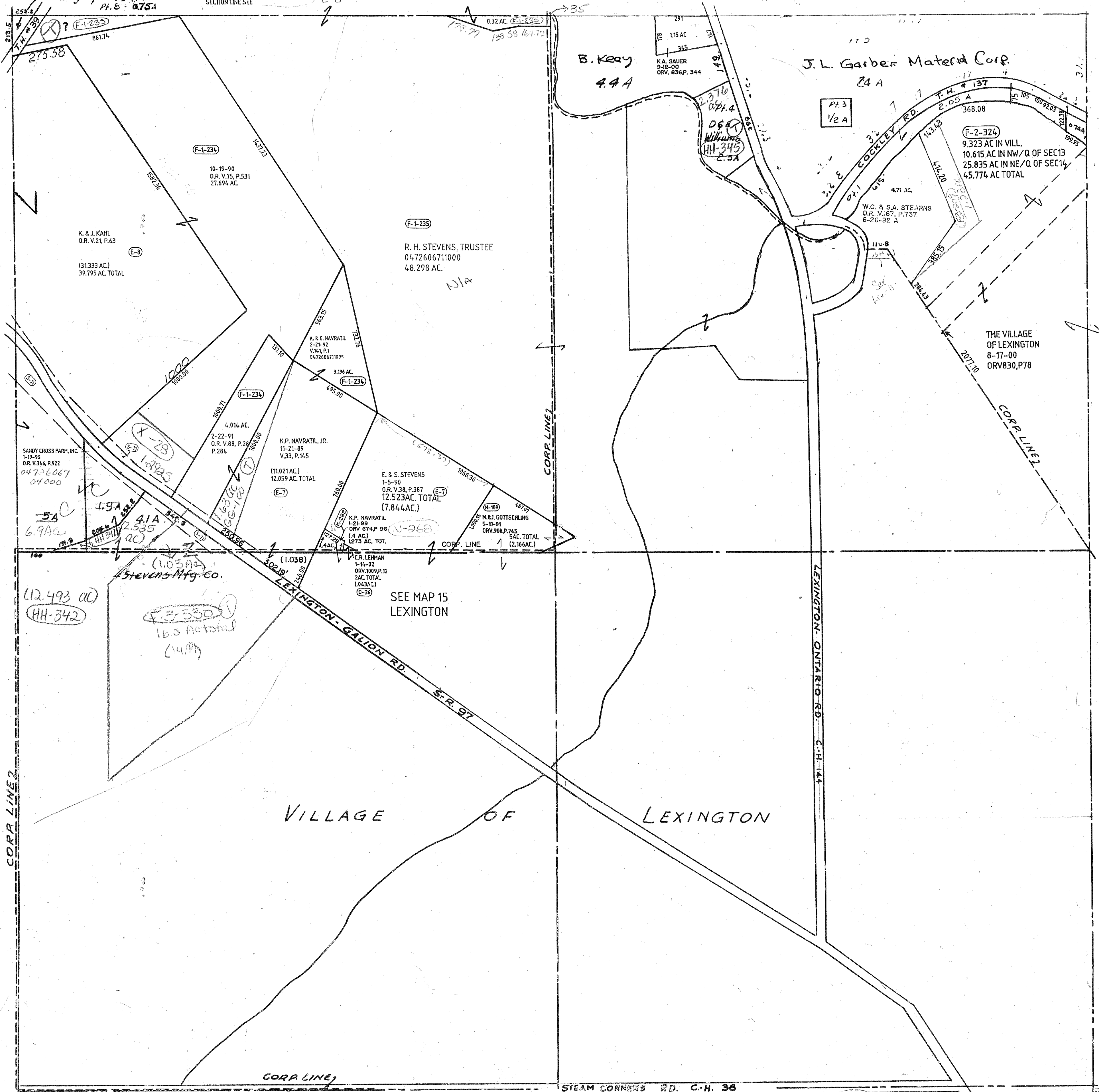


7 DUE TO DIFFERENCES IN 2 SURVEYS THE TAX MAP OFFICE IS UNABLE TO DETERMINE CORRECT PROPERTY AND SECTION LINE SEE F-1-234 F-1-235 F-1-236 F-1-237 F-1-238

City of Mansfield Pt. 8 - 0.75A



K. & J. KAHL
O.R. V.21, P.63
(31333 AC.)
39.795 AC. TOTAL

F-1-234
10-19-90
O.R. V.75, P.531
27.694 AC.

F-1-235
R. H. STEVENS, TRUSTEE
0472606711000
48.298 AC.
N/A

B. Keay
4.4 A

J. L. Garber Material Corp.
24 A

F-2-324
9.323 AC IN VILL.
10.615 AC IN NW/Q OF SEC13
25.835 AC IN NE/Q OF SEC14
45.774 AC TOTAL

W.C. & S.A. STEARNS
O.R. V.67, P.737
6-26-92 A

THE VILLAGE
OF LEXINGTON
8-17-00
ORV830, P78

SANDY CROSS FARM, INC.
1-19-95
O.R. V.364, P.922
04726067
041000

F-1-234
2-22-91
O.R. V.88, P.284
P.284

K.P. NAVRATIL, JR.
11-21-89
V.33, P.145
(11,021 AC.)
12,059 AC. TOTAL

E. & S. STEVENS
1-5-90
O.R. V.38, P.387
12,523 AC. TOTAL
(7,844 AC.)

M.R.J. GOTTSCHLING
5-11-01
ORV.908, P.745
5 AC. TOTAL
(2,166 AC.)

K.E.R. LEHMAN
1-14-02
ORV.1009, P.12
2 AC. TOTAL
(0.63 AC.)
(0-36)

SEE MAP 15
LEXINGTON

(12,493 AC)
HH-342

F-3330
160 Acre total
(14,000)

VILLAGE OF LEXINGTON

STEAM CORNERS RD. C.H. 36

T-20, R-19

TROY TWP.

SECTION 14

1-16-02