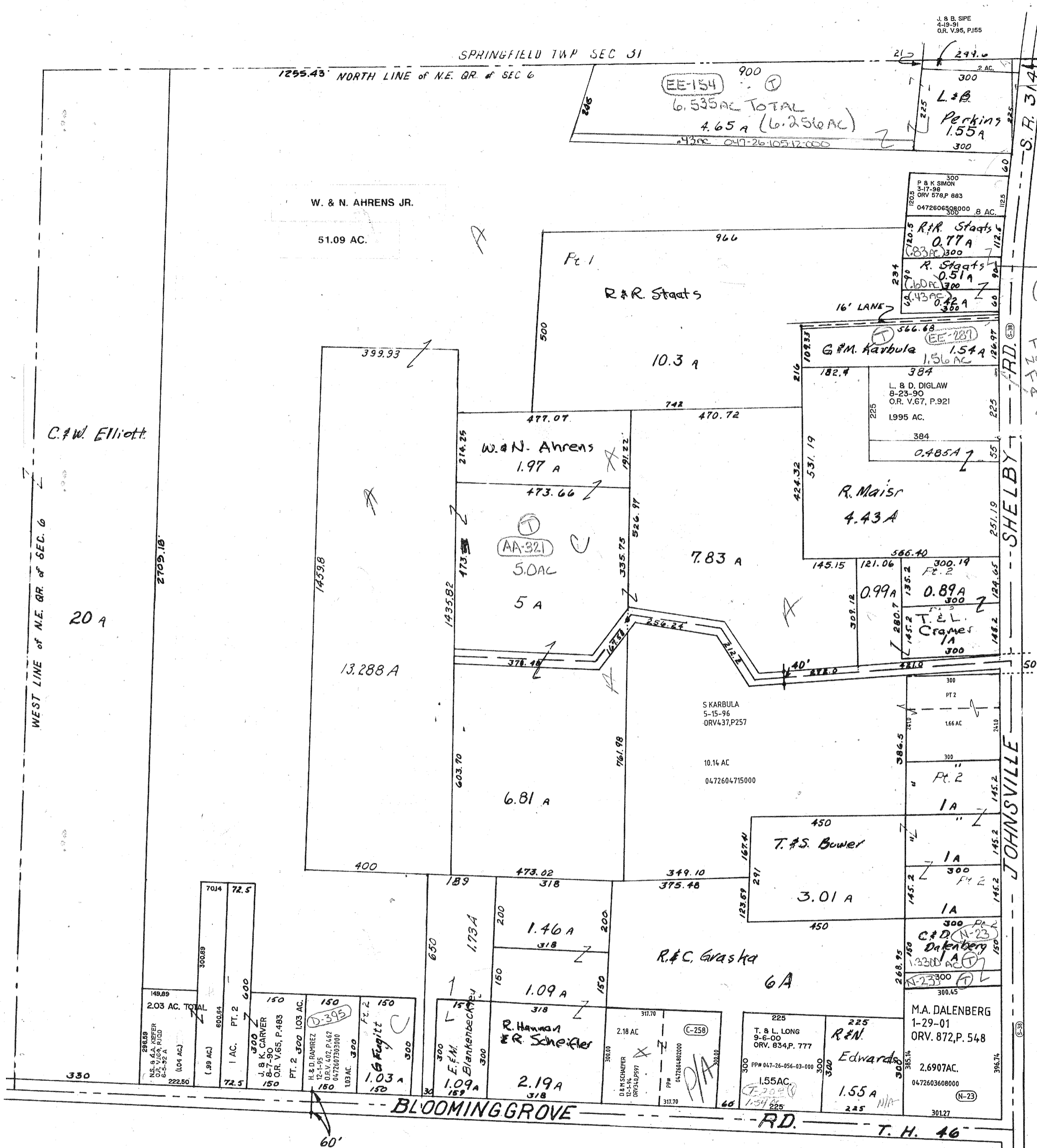


SPRINGFIELD TWP SEC 31

J. & B. SIPE
4-19-91
O.R. V.95, P.165

1295.43 NORTH LINE of N.E. QR. of SEC 6



SEC 5
(279 AC)
EE-154 (T)

1.816 AC Total
HH-176

THIS MAP IS
NOT DWG CORR.
THERE IS A 1.25
AC PARCEL THAT
IS NOT SHOWN
SEE SURVEY
EE-287

C.W. Elliott

WEST LINE of N.E. QR. of SEC. 6

20 A

W. & N. AHRENS JR.
51.09 AC.

R & R. Staats

G.M. KARBULA
1.56 AC

R. MAISR
4.43 A

W. & N. Ahrens
1.97 A

AA-321
5.0 AC
5 A

7.83 A

6.81 A

S KARBULA
5-15-96
ORV437,P257
10.14 AC
0472604715000

T.S. BOWER
3.01 A

R. & C. GRASKA
6A

NS. & A. SCHNEIDER
OR. V.63, P.100
6-5-92 A
(.04 AC)
222.50

NS. & K. CARVER
8-7-90
OR. V.65, P.483
PT. 2 300 103 AC.

H. & D. RAMIREZ
12-14-95
OR. V.62, P.467
0472607303000
1.03 AC.

Fugitt
1.03 A

E.F.M. BLANKENBECK
1.09 A

R. HANNA
& R. SCHNEIDER
2.19 A

D.B.M. SCHNEIDER
12-14-94
ORV340P597
2.18 AC

T. & B. LONG
9-6-00
ORV. 634, P. 777
PPH 047-26-056-03-000
1.55 AC

R.N. EDWARDS
2.6907 AC.

M.A. DALENBERG
1-29-01
ORV. 872, P. 548
2.6907 AC.

C.D. DALENBERG
1-23-01
1.3300 AC

SCALE: 1" = 200'

TROY TWP
N.E. QR of SEC 6

1-30-01