

T. & L. SNEERINGER
1-2-96
ORV.407.P.381
0472606205000

205 11455 AC
ORWEILER RD. TR. 153

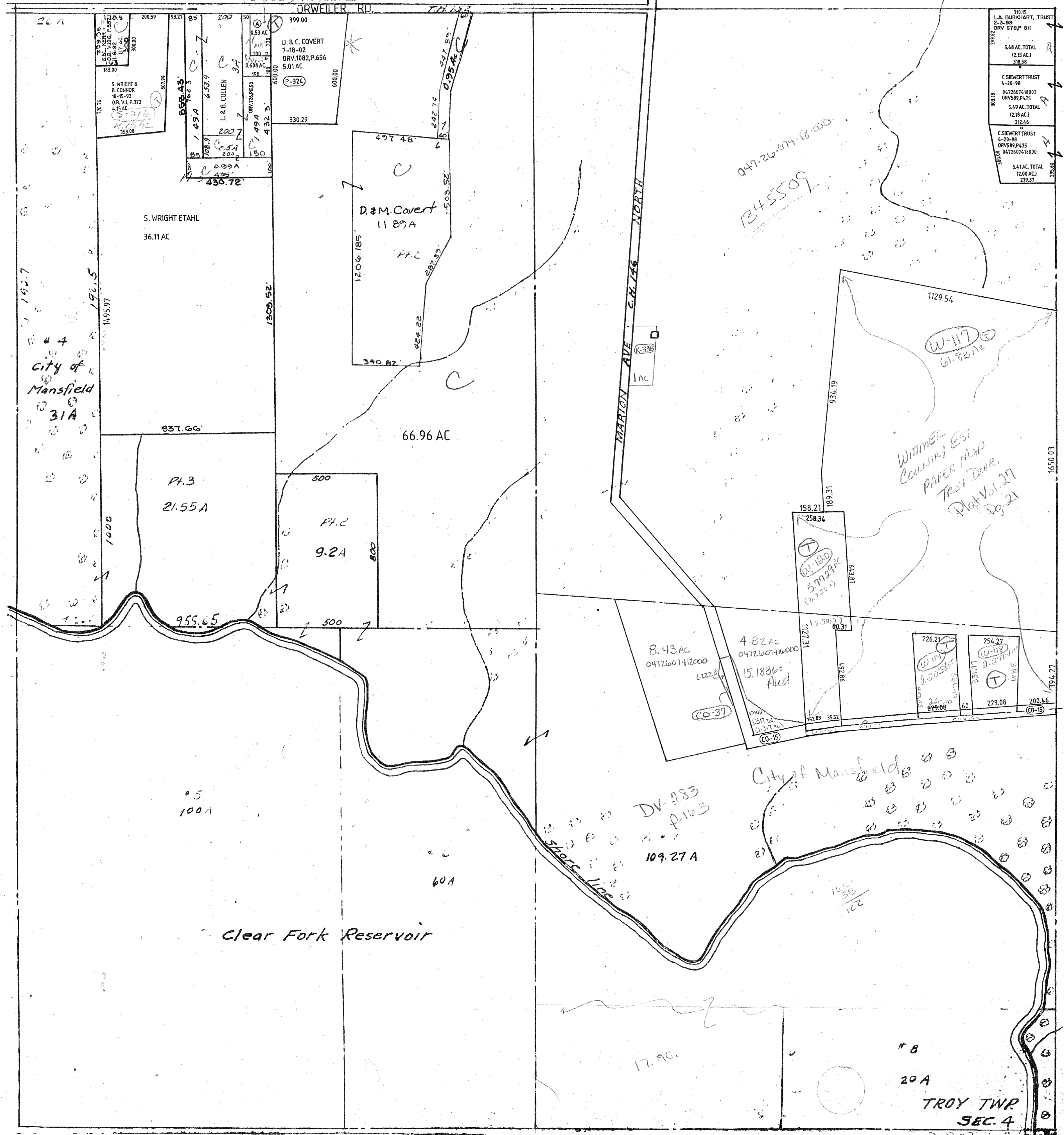
310.15
L.A. BURKHART, TRUST
2-3-99
ORV 678.P.511
299.62
5.48 AC TOTAL
(2.15 AC)
318.58
C SIEWERT TRUST
4-20-98
0472607418002
ORV589.P.475
5.49 AC TOTAL
(2.18 AC)
312.46
C SIEWERT TRUST
4-20-98
0472607418000
ORV589.P.475
0472607418000
5.41 AC TOTAL
(2.00 AC)
279.37
295.80

047-26-074-18-000
134,5509

WITMER
COUNTY EST
PAPER MAP
TROY DWR.
Plot Vol. 27
Pg. 21

158.21
258.34
W-190
5712 AC
(3.35 AC)

226.21
W-114
2,303.88
229.88
60
254.27
W-113
2,211.11
229.08
60
200.46
(CO-15)



City of Mansfield
31A

S. WRIGHT ET AHL
36.11 AC

D. & M. Covert
1189A

66.96 AC

PH.3
21.55 A

PH.2
9.2A

8.43 AC
0472607412000

4.82 AC
0472607416000

15.1836 =
Aud

(CO-15)

City of Mansfield

DV-283
P-103

109.27 A

Clear Fork Reservoir

Shore line

17. AC.

#8
20A

TROY TWP
SEC. 4

TROY TWP
SEC. 4.

7-22-00