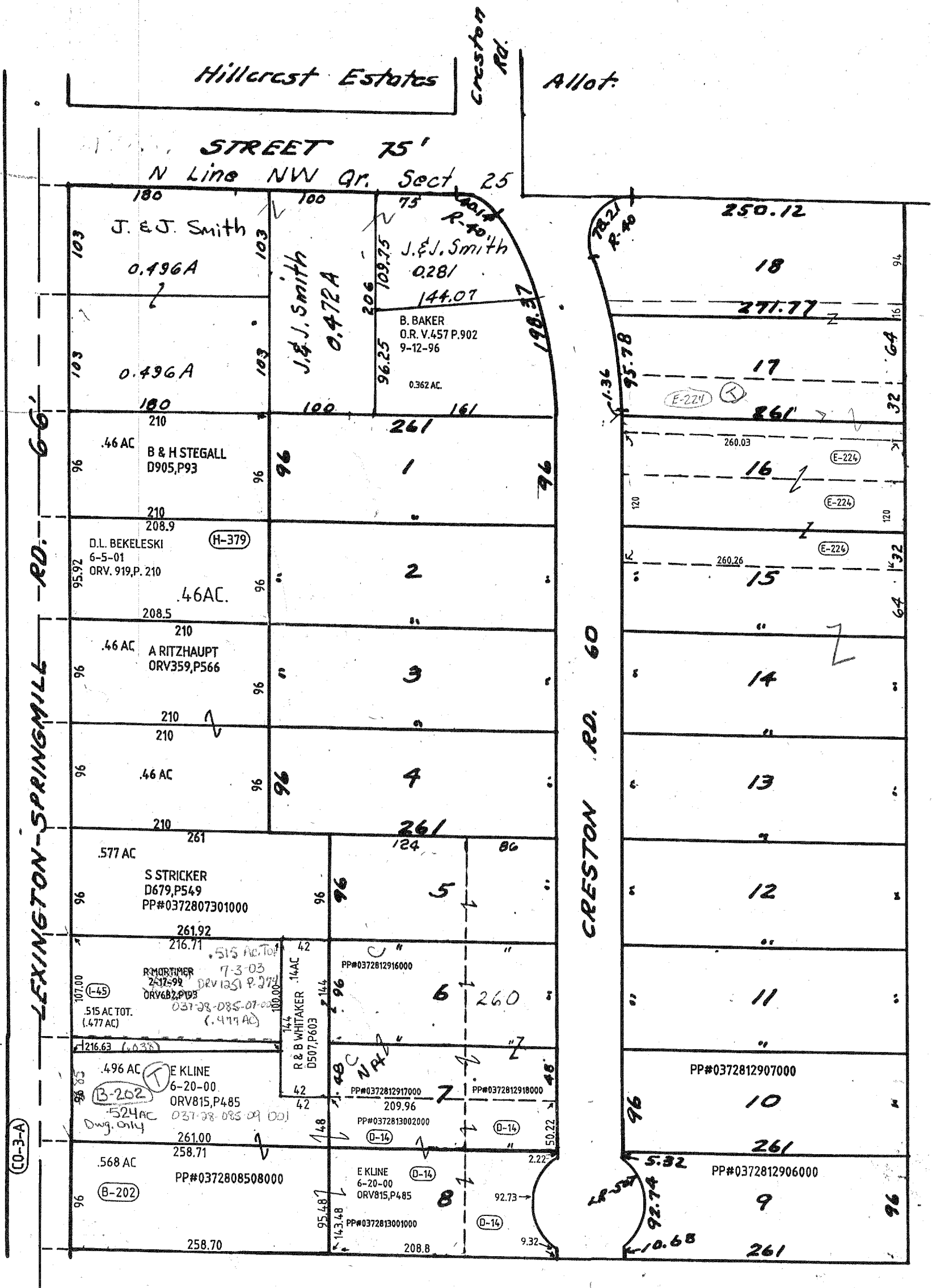


CO-3
12-27 + 13/27
49-WD -
0.168 Acres

Scale
1" = 100'

H. MORTIMER
2-25-99
ORV 682, P52
5.19 AC TOT.
(.038 AC) (L-45)



WOODBOUND ACRES.
Pt. NW 1/4, Sec. 25, Springfield Twp.
For details see Vol. 19 P. 130 Recorders Plats

51

SPRINGFIELD TWP ALLOTS.

6-7-01