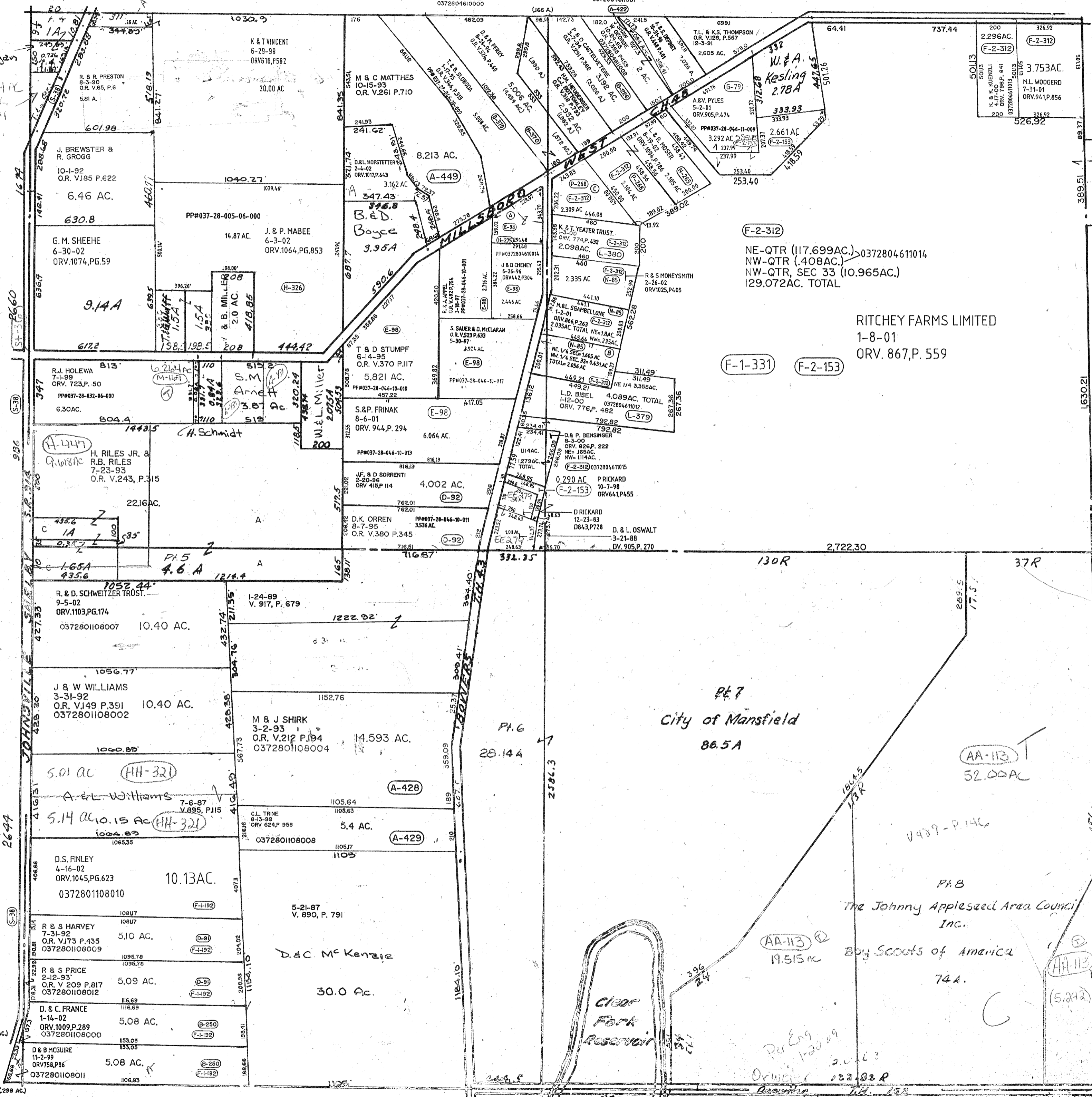


(A) R.D. AULD
3-17-98
ORV.560.P.633
1.624 AC.TOT.
0372804610012
0372804610000

(B) TURN KEY STORAGE, INC
6-5-02
ORV.1065.PG.686
2.056 AC

(C) G. & V. BEAL
6-11-02
ORV.1068.PG.47

W.E.J. Meligen
7274K
T.O.O.L.
10-10-84
D.V. 855.
P. 47



(F-2-312)
NE-QTR (117.699AC.)
NW-QTR (408AC.)
NW-QTR, SEC 33 (10.965AC.)
129.072AC. TOTAL

RITCHY FARMS LIMITED
1-8-01
ORV. 867, P. 559

(F-1-331) (F-2-153)

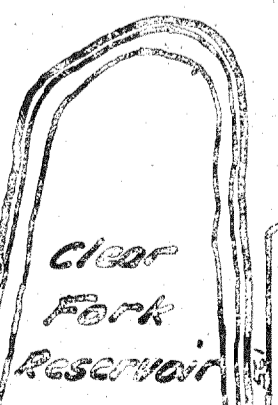
Pt. 7
City of Mansfield
86.5A

(AA-113)
52.00AC

Pt. B
The Johnny Appleseed Area Council
Inc.

Boy Scouts of America
74A.

(AA-113)
19.515 ac



Map No. 19.

SPRINGFIELD, TN, SEC. 33