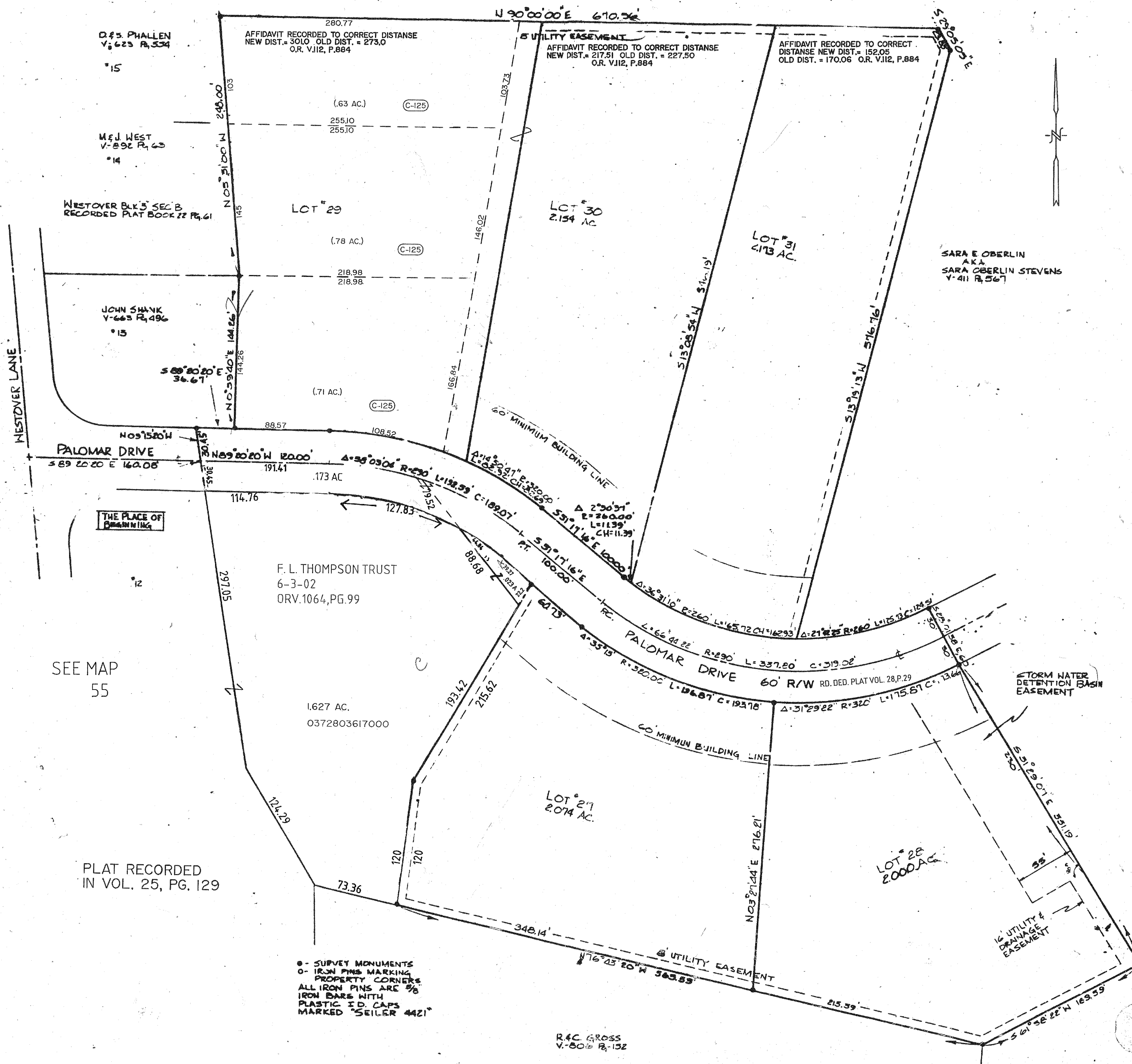


# WESTOVER BLOCK 3 SECTION D



D.F.S. PHALLEN  
V-623 P.534

M.F.J. WEST  
V-892 P.63

JOHN SHANK  
V-663 P.496

AFFIDAVIT RECORDED TO CORRECT DISTANCE  
NEW DIST. = 301.0 OLD DIST. = 273.0  
O.R. V.112, P.884

UTILITY EASEMENT  
AFFIDAVIT RECORDED TO CORRECT DISTANCE  
NEW DIST. = 217.51 OLD DIST. = 227.50  
O.R. V.112, P.884

AFFIDAVIT RECORDED TO CORRECT DISTANCE  
NEW DIST. = 152.05 OLD DIST. = 170.06  
O.R. V.112, P.884

SARA E OBERLIN  
AKA  
SARA OBERLIN STEVENS  
V-411 P.567

F. L. THOMPSON TRUST  
6-3-02  
ORV.1064, PG.99

1,627 AC.  
0372803617000

LOT 27  
2,074 AC.

LOT 28  
2,000 AC.

• - SURVEY MONUMENTS  
○ - IRON PINS MARKING PROPERTY CORNERS  
ALL IRON PINS ARE 3/8" IRON BARS WITH PLASTIC I.D. CAPS MARKED "SEILER 4421"

R.A.C. GROSS  
V-506 P.152

SEE MAP 55

PLAT RECORDED IN VOL. 25, PG. 129