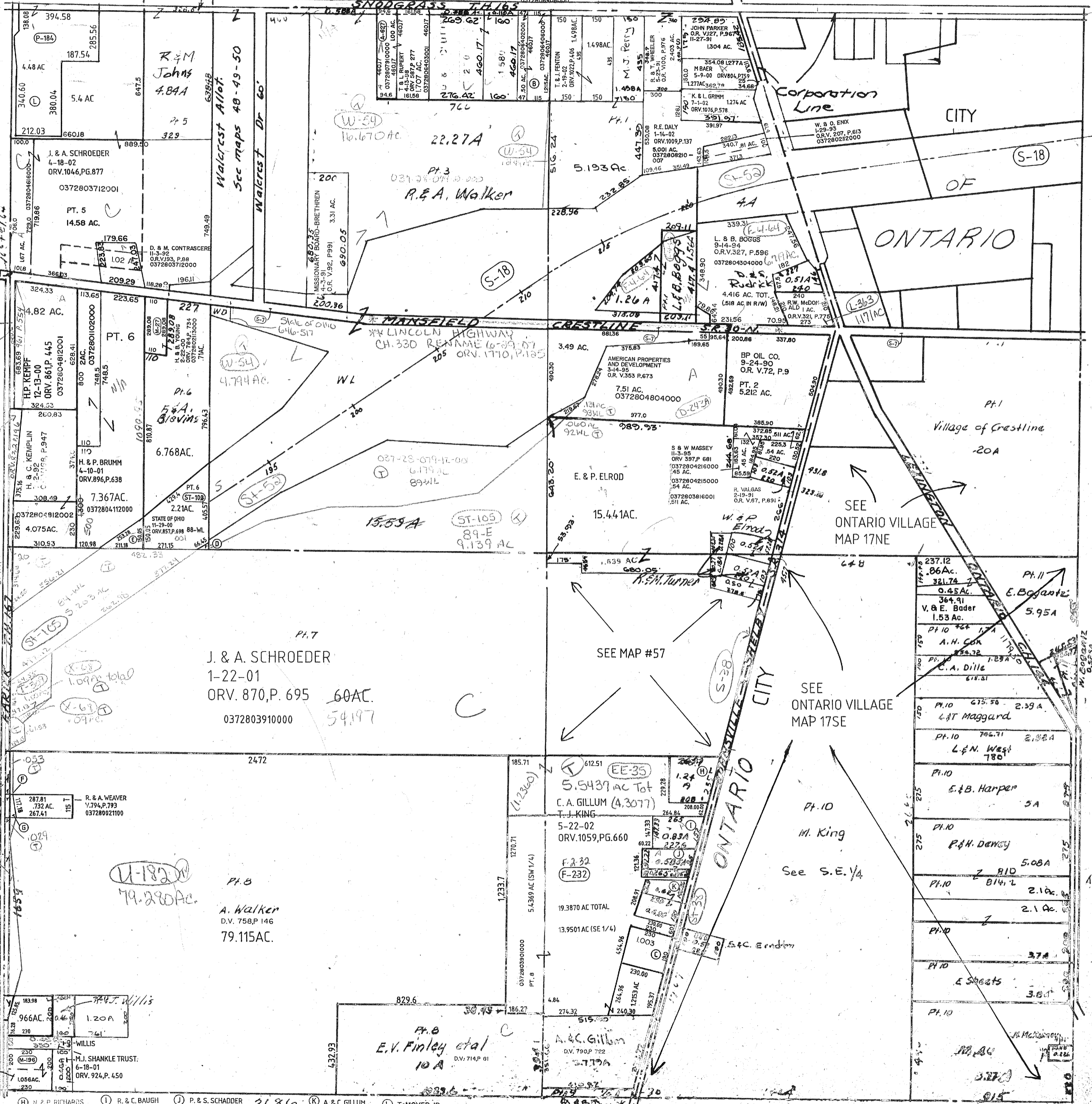


(80-Vol.-123) 9. 504-023A)

R.S. BUTTERBAUGH
1-22-99
ORV. 674, P. 786
50 AC
0372806402001
1215 AC
0372806406000

1.1774

SNODGRASS T.H. 165



OHIO DEPT. OF TRANSPORTATION
11-29-00
ORV. 857, P. 702
PT. 6
0.22 AC
88-E

STATE OF OHIO
11-29-00
ORV. 857, P. 725
87-WL
3.63 AC
PT. 6

COUNTY OF RICHLAND
12-5-01
ORV. 992, P. 474
0.53 AC
86-WV

COUNTY OF RICHLAND
2-15-00
ORV. 862, P. 271
101 AC TOTAL
EC. 17
T. 8

COUNTY OF RICHLAND
2-15-00
ORV. 880, P. 345
0.94 AC
9-WV
5-100

M.B. KOLMANBERGER
6-5-00
ORV. 811, P. 635

R. & C. BAUGH
0.83 AC

P. & S. SCHADDER
0.585 AC

A. & C. GILLUM
7.56 AC

T. MOYER JR.
11-27-00
ORV. 857, PG. 103

A. & C. GILLUM
8-15-97
ORV. 829, P. 141

Twp. 21-R-19

7-9-02

SPRINGFIELD TWP. SEC. 17