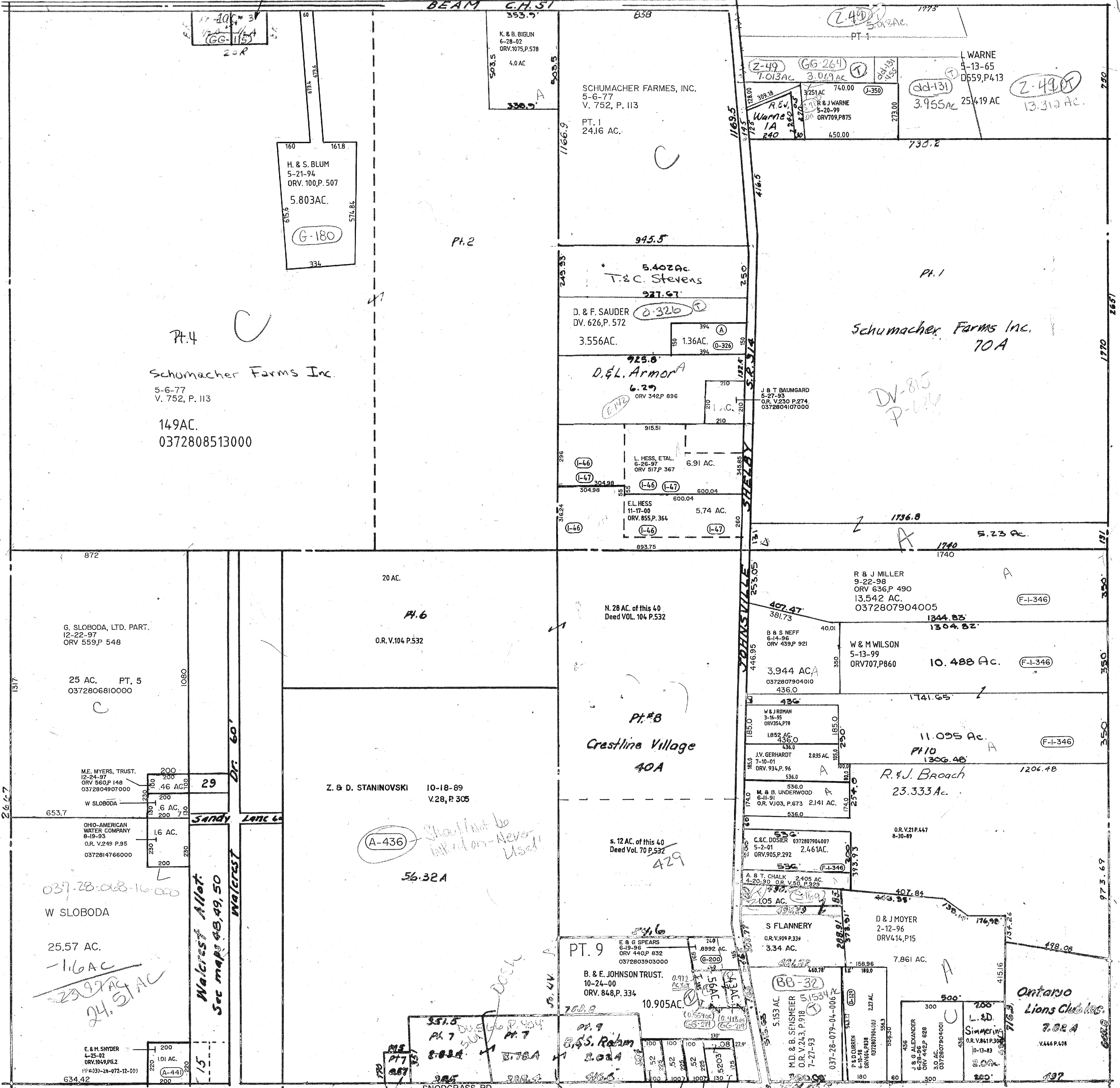


L.D. Porter

K. ULSH
8-12-02
ORV.1092,P.686
1.36AC. (G-326)

1964 - Carl -
LWONIX

BEAM C.H.S.I



Schumacher Farms Inc.
5-6-77
V. 752, P. 113
149AC.
0372808513000

Schumacher Farms Inc.
70A

Pt. #8
Crestline Village
40A

Z. & D. STANINOVSKI 10-18-89
V.28, P.305

Ontario
Lions Club
7.82A
V.446 P.628

(A-436) Should not be
inked on - Never
Used!

037-28-028-16-000
W SLOBODA
25.57 AC.
-1.6 AC
23.97 AC
24.51 AC

Walcrest Alley
Sec maps 48, 49, 50

SPRINGFIELD TWP. SEC. 8

Twp. 21-R, 19

9-9-02