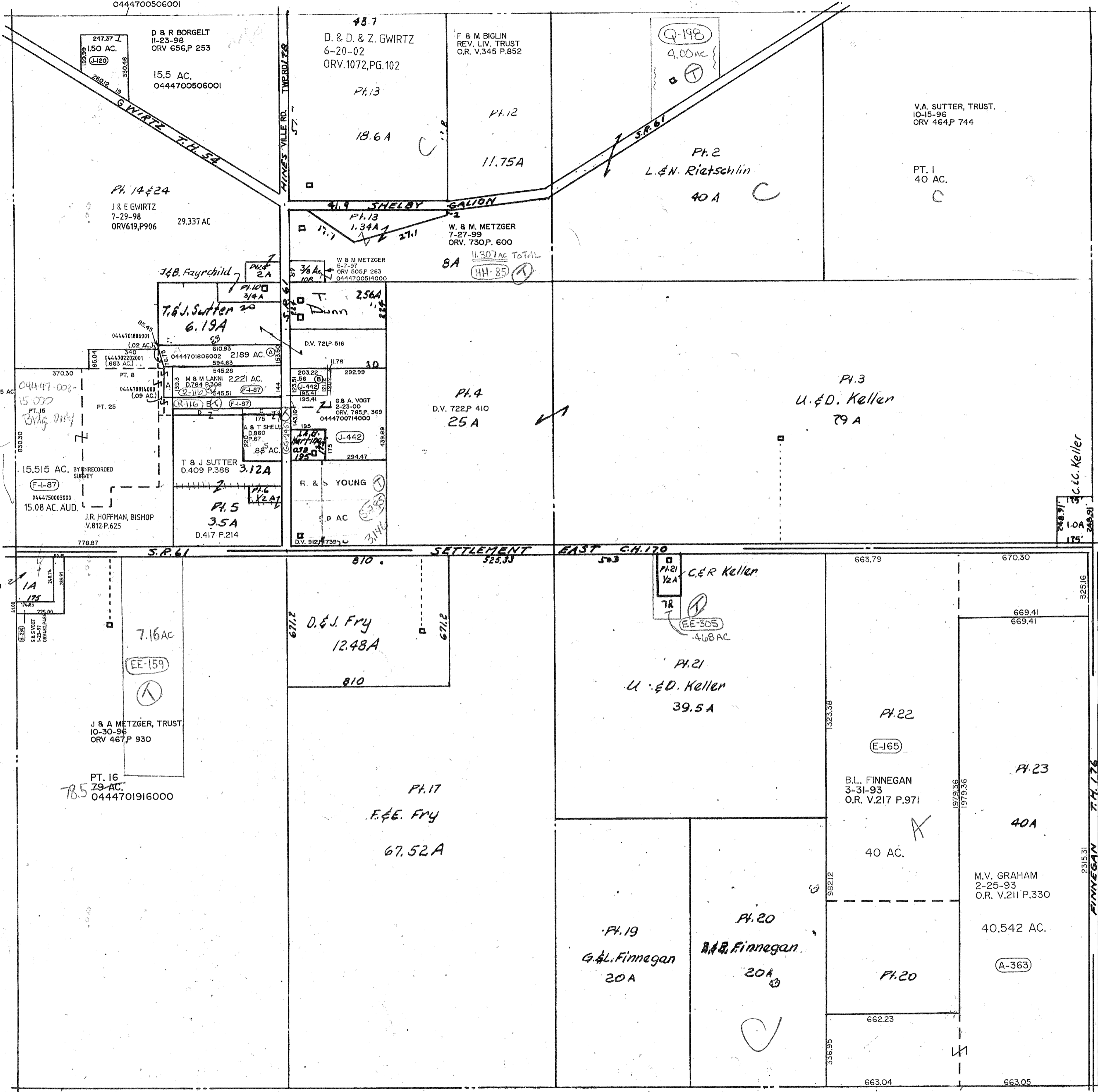


A R. & M. KUHN
5-16-01
ORV. 910, P. 751
2.189 AC.
0444701806002

B R. & M. VOLKMER
12-7-98
ORV. 660, P. 568
.56 AC.
J. & B. BORGELT
D.V. 598, P. 587
1.5 AC.
0444700506001



A - J.R. HOFFMAN
BISHOP OF TOLEDO
12-9-94
OR. V.342 P.37
150 AC.
PT. OF 15.515 AC
0444701806003
B - M & M LANNI
12-9-94
OR. V.342 P.43
0444700713000.742 AC.
C - A & T SHELL
12-9-94
OR. V.342 P.39
057 AC.
D - SUTTER
12-9-94
OR. V.342 P.41
121 AC.

Twp. 21-R.20

SHARON TWP. SEC. 26

6-27-02