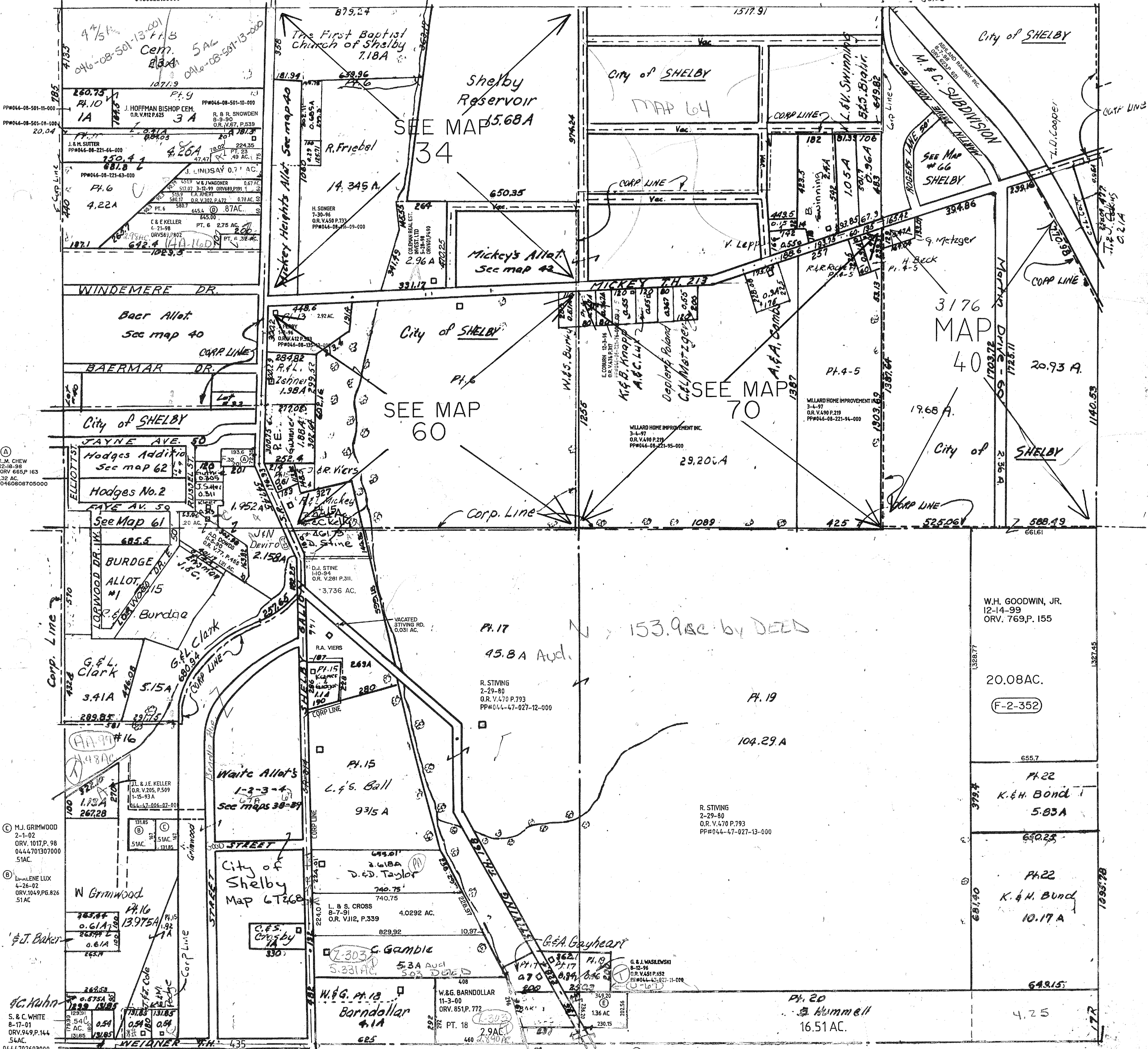


① K.M. ALBERT
8-10-01
ORV. 94.6, P. 279
87AC.
0460822168000



② M. CHEW
12-18-98
ORV. 655, P. 163
32 AC.
0460808705000

③ M.J. GRIMWOOD
2-1-02
ORV. 1017, P. 98
0444.701307000
51AC.

④ DORLENE LUX
4-26-02
ORV. 1049, P. 826
51AC.

⑤ J. Baker

⑥ G.C. Kuhn

⑦ S. & C. WHITE
8-17-01
ORV. 949, P. 144
54AC.
0444.702603000

ANNEXATION PLAT VOL. 28, P. 25
ANNEXATION PLAT VOL. 28, P. 36

⑧ A.M. DIETZ
7-16-02
ORV. 1081, P. 589
44 AC SW
92 AC SE.

SHARON TWP. SEC. 17

10-24-02