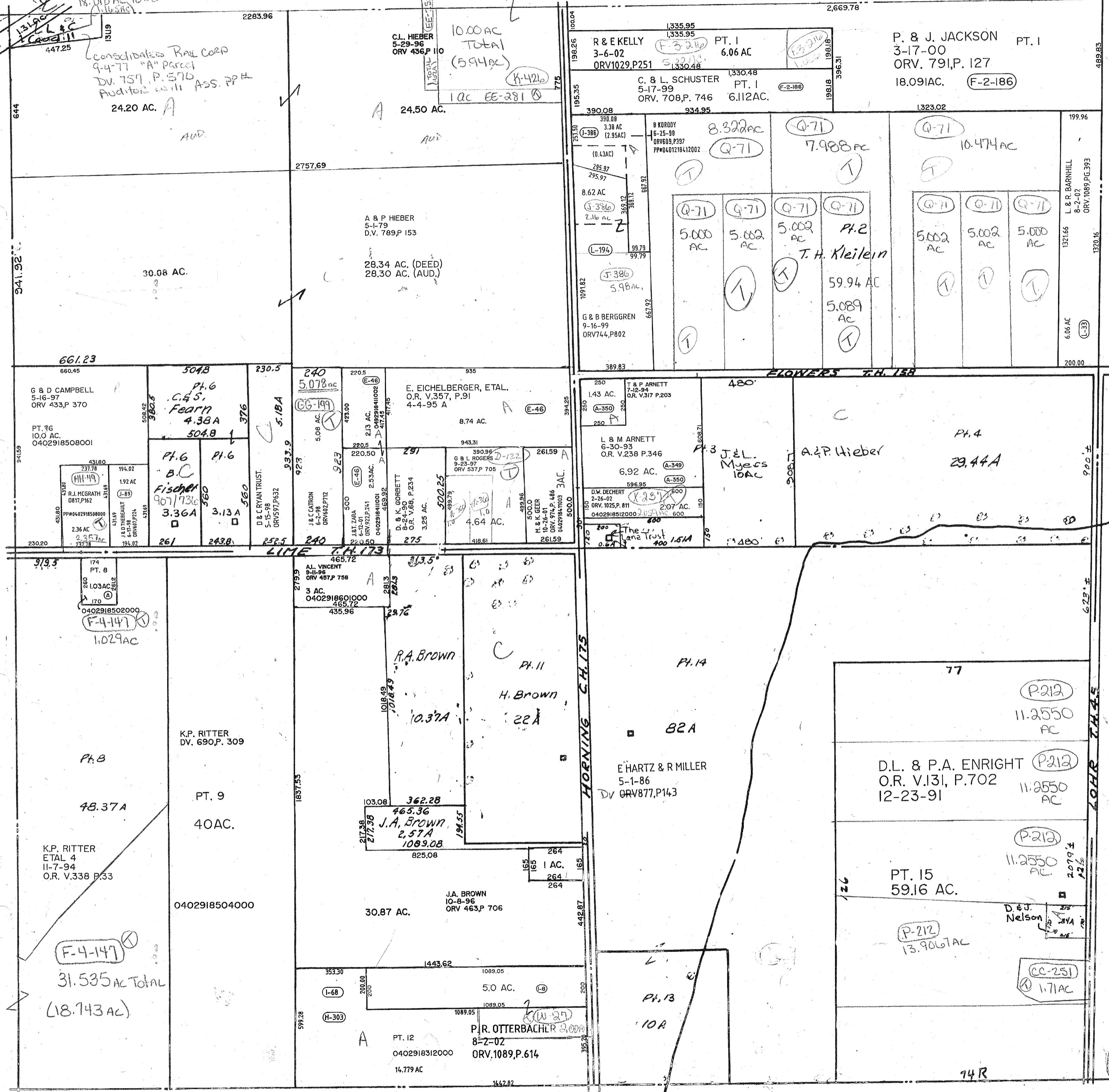


F-3-430

131.96
447.25
Consolidated Rail Corp
9-4-77 "A" parcel
DV. 757 P. 570
Audited with Ass. PPH
24.20 AC. A



F-4-147
31.535 AC TOTAL
(18.743 AC)

10.00 AC
TOTAL
(5.94 AC)
K-420
1 AC EE-281

1335.95
1335.95
R & E KELLY
3-6-02
PT. 1
6.06 AC
ORV 1029 P251
S-330
S-330-48

390.08
390.08
C. & L. SCHUSTER
5-17-99
PT. 1
6.112 AC.
ORV. 708 P. 746

8.322 AC
7.988 AC
10.474 AC
5.000 AC
5.002 AC
5.002 AC
P4.2
59.94 AC
5.089 AC

P. & J. JACKSON
3-17-00
ORV. 791 P. 127
18.091 AC.
F-2-186

L & R BARNHILL
8-2-02
ORV. 1089 PG. 393

T.H. Klelein

K.P. RITTER
DV. 690 P. 309
PT. 9
40 AC.
0402918504000

R.A. Brown
H. Brown
J.A. Brown
J.A. Brown
10-8-96
ORV 463 P 706
30.87 AC.
31.535 AC TOTAL
(18.743 AC)

E HARTZ & R MILLER
5-1-86
DV ORV 877 P143
82A
77
11.2550 AC
D.L. & P.A. ENRIGHT
12-23-91
11.2550 AC
PT. 15
59.16 AC.
D.E.J. Nelson
P-212
13.9067 AC
CC-251
1.71 AC