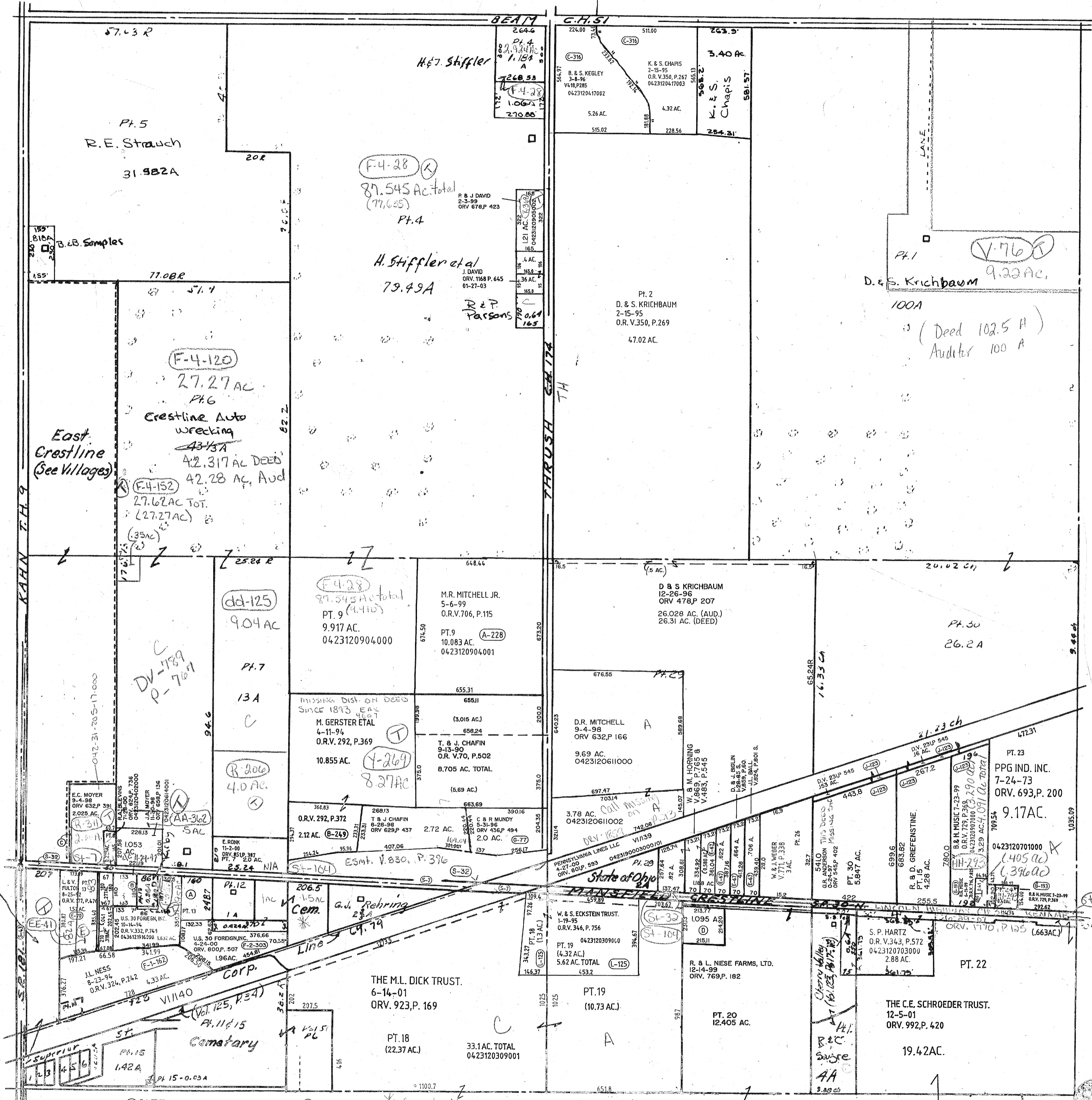


© E.C. MOYER
9-15-00
ORV 837, P. 403
03AC
L-245

In City of Crestline



(B) T.A. ETHER
9-5-02
ORV. 1103, P. 159
561AC.
F-2-303

(A) SUPER WASH. INC.
ORV. 307, P. 159
561AC.
F-2-303

(E) S & K GREENICH
3-4-02
ORV. 1028, P. 506

* GAVE to Army
1-26-00 To assign
part

Twp. 20-R.20

(D) J. & A. BRUCE
4-2-01
ORV. 892, P. 404
0423120412000

SANDUSKY TWP. SEC. 11
9-6-0