

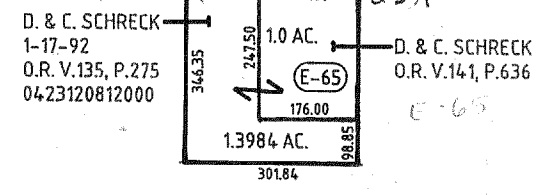
851'

T. & S. GLAUER

10.032 AC.

856.66'

L.A.V.E.



D. & L. SCHROEDER TRUST.
1-16-01
ORV. 869, P. 228

Pt. 4

50.6016 AC.

71.8

47.25

36.14

Glauer

109.968 AC

109.9

86.5R

82.9E

HORNING CH. 75

HOOK C.H. 52

148 R

Pt. 3

V. & H. Riemann

80A

148 R

Pt. 3

V. & H. Riemann

82.75A

108

D & L SCHROEDER
1465.2
O.R. V.137, P.383
0423120813000
7-13-00
6.0 AC
ORV821, P.318
1465.2

198

F.M. LARIBEE
4-6-90
O.R. V.49, P.101

Pt. 2
3/4
3.42A

38.17 ch

Pt. 8
75.35 AC.

NA

652.53

363
J. & J. Hornig
3A
360
360

J. FINNEGAN
8-31-94
O.R. V.325 P.528

Pt. 7

R. D. & T. E. GLAUER
9-16-94
O.R. V.328, P.103

111.92 AC.

Pt. 6

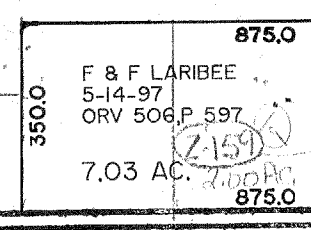
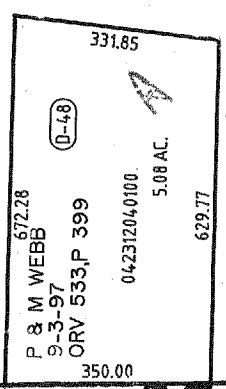
40 AC.

(C-230)

F.M. LARIBEE TRUST
4-6-90
O.R. V.49, P.101

Pt. 9
94.27 AC.

NA



652.24

BEAM C.H. 51

TWP. 20-R. 20.

SANDUSKY TWP. SEC. 1 (North)

117-01