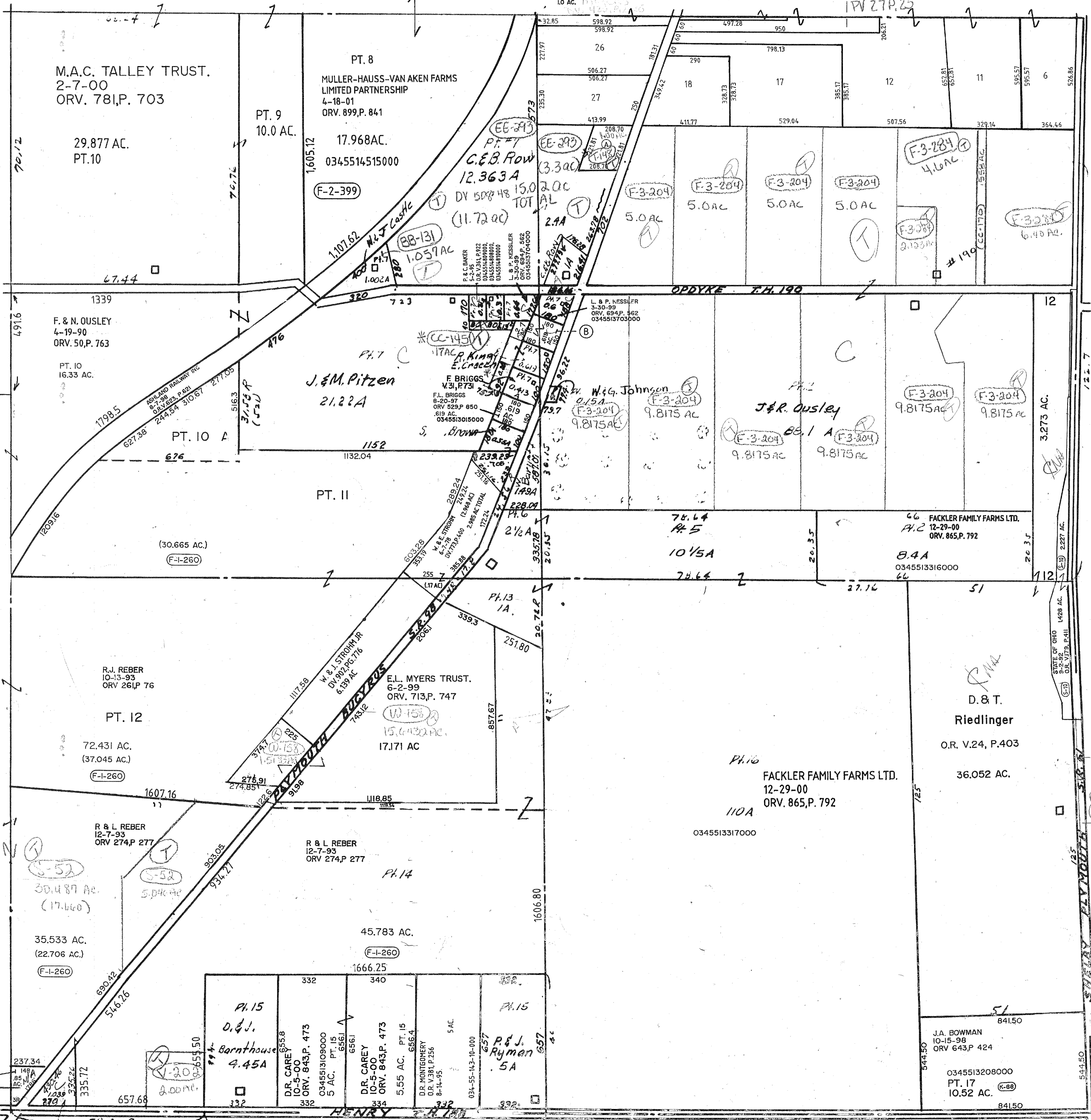


(A) W.R. SEEL
2-13-98
ORV 570.P.143
1.0 AC.

(B) C. & J. CORDREY
3-20-02
ORV.1034, PG. 370

PLUM CREEK
MEADOWS
1PV 27P.25



M.A.C. TALLEY TRUST.
2-7-00
ORV. 781.P. 703

29.877 AC.
PT.10

PT. 8
MULLER-HAUSS-VAN AKEN FARMS
LIMITED PARTNERSHIP
4-18-01
ORV. 899.P. 841

17.968 AC.
0345514515000
F-2-399

F. & N. OUSLEY
4-19-90
ORV. 50.P. 763

PT. 10
16.33 AC.

PT. 7
J. & M. Pitzen
21.22 AC

F. BRIGGS
V.31, P.731
F.L. BRIGGS
8-20-97
ORV 529.P. 850
619 AC.
0345513015000

L. & P. KESSLER
3-30-99
ORV. 894.P. 562
0345513703000

W.G. JOHNSON
0.15 AC
F-3-204
9.8175 AC

J. & R. OUSLEY
9.8175 AC

F-3-204
9.8175 AC

F-3-204
9.8175 AC

R.J. REBER
10-13-93
ORV 261.P. 76

PT. 12
72.431 AC.
(37.045 AC.)
F-1-260

E.L. MYERS TRUST.
6-2-99
ORV. 713.P. 747

17.171 AC

PH.16
FACKLER FAMILY FARMS LTD.
12-29-00
ORV. 865.P. 792

D. & T.
Riedlinger
O.R. V.24, P.403
36.052 AC.

R & L REBER
12-7-93
ORV 274.P. 277

30.487 AC.
(17.660)

35.533 AC.
(22.706 AC.)
F-1-260

R & L REBER
12-7-93
ORV 274.P. 277

45.783 AC.
F-1-260

PH.15
D. & J.
Barnhouse
4.45A

D.R. CAREY
10-5-00
ORV. 843.P. 473
5 AC. PT. 15
0345513109000

D.R. CAREY
10-5-00
ORV. 843.P. 473
5.55 AC. PT. 15
0345513109000

D.R. MONTGOMERY
O.R. V.381.P.256
8-14-95

5 AC.

PH.15
P. & J.
Ryman
5A

J.A. BOWMAN
10-15-98
ORV 643.P. 424

PT. 17
10.52 AC.
K-88

R.R. SHEPARD
4-18-97
ORV 500.P. 184

PT. 14
0345514208000
85 AC.

Myers Bottled
Gas Inc.

Temp. 23-2.19

PLYMOUTH TWP. SEC. 7

7-18-02 97