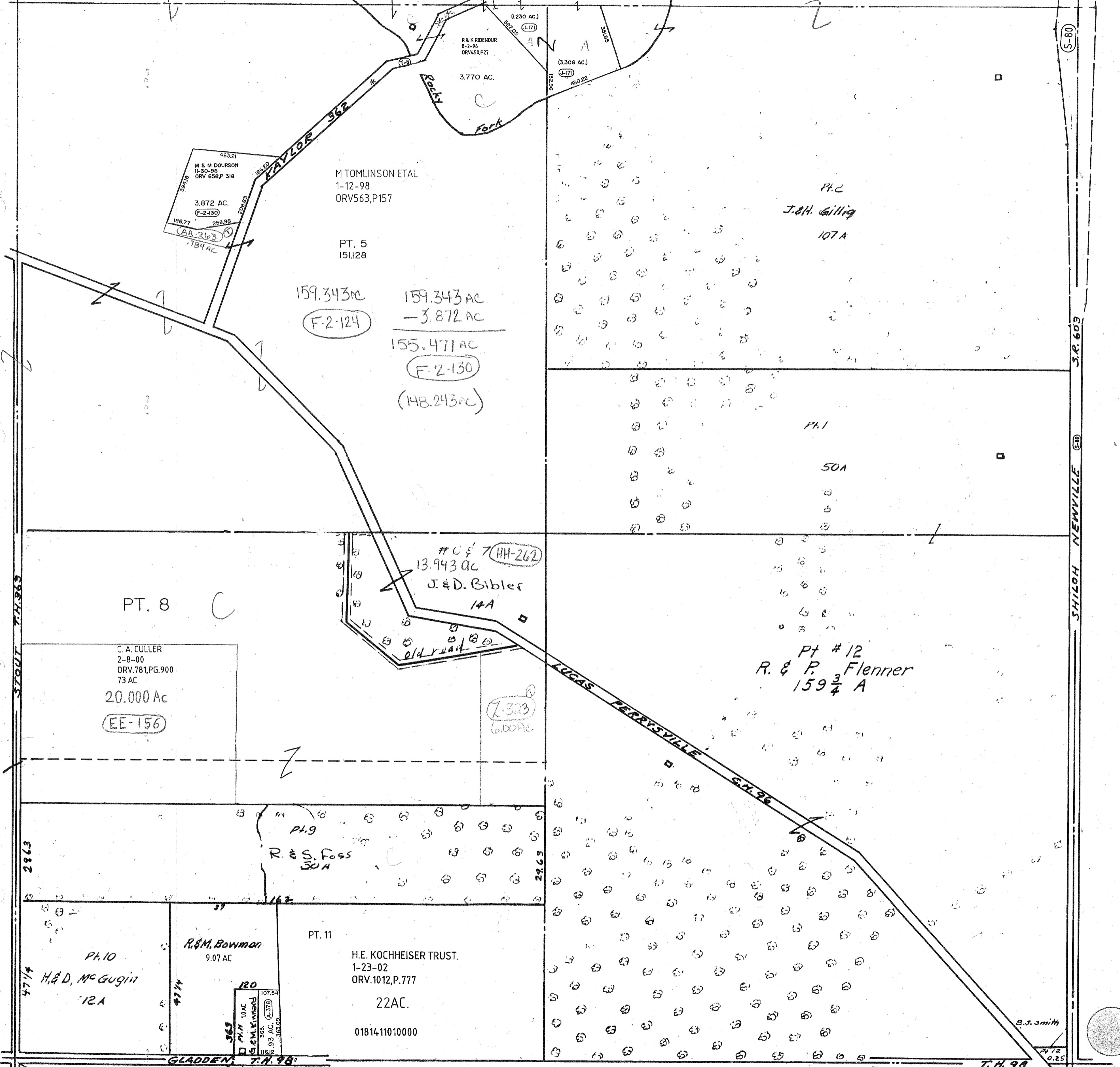


* KAYLOR RD.
SURVEY PLAT
DV. 28, P. 41
PV-29 P-42

* Kaylor Rd
vac. plat & New Road
Vol 30 p. 53

K & S COOPER
1-22-99
ORV 674 P 511
(1230 AC.)-NW1/4
(3,306 AC.)-NE1/4
5125 AC. TOT.



463.21
M & M DOURSON
11-30-98
ORV 656 P 318
3.872 AC.
F-2-130
186.77
258.98
178.94 AC
CA-263

M TOMLINSON ETAL
1-12-98
ORV563,P157

PT. 5
151.128

159.343 AC
F-2-124

159.343 AC
- 3.872 AC

155.471 AC
F-2-130
(148.243 AC)

(1230 AC.)
J-171
R & K RIDENOUR
8-2-96
ORV450,P27
3,770 AC.
(3,306 AC.)
J-171
430.22

PH.2
J.H. Gillig
107A

PH.1
50A

#6 & 7 (HH-262)
13.943 AC
J & D. Bibler
14A
old road

(7-323)
W.D.C.H.C.

PH #12
R. & P. Flenner
159 3/4 A

PT. 8
C.A. CULLER
2-8-00
ORV.781,PG.900
73 AC
20.000 Ac
EE-156

PH.9
R. & S. Foss
30A

PH.10
R. & M. Bowman
9.07 AC

PT. 11
H.E. KOCHHEISER TRUST.
1-23-02
ORV.1012,P.777
22AC.
0181411010000

120
G.E.M. Kinnard
107.54
363
93 AC. (A-378)
116.12
363.09

GLADDEN T.H. 98

1079

M. KINNARD
3-11-94
O.R. V.292 P.319.

Twp. 22-R-17

MONROE TWP.
SEC. 15

9-9-02