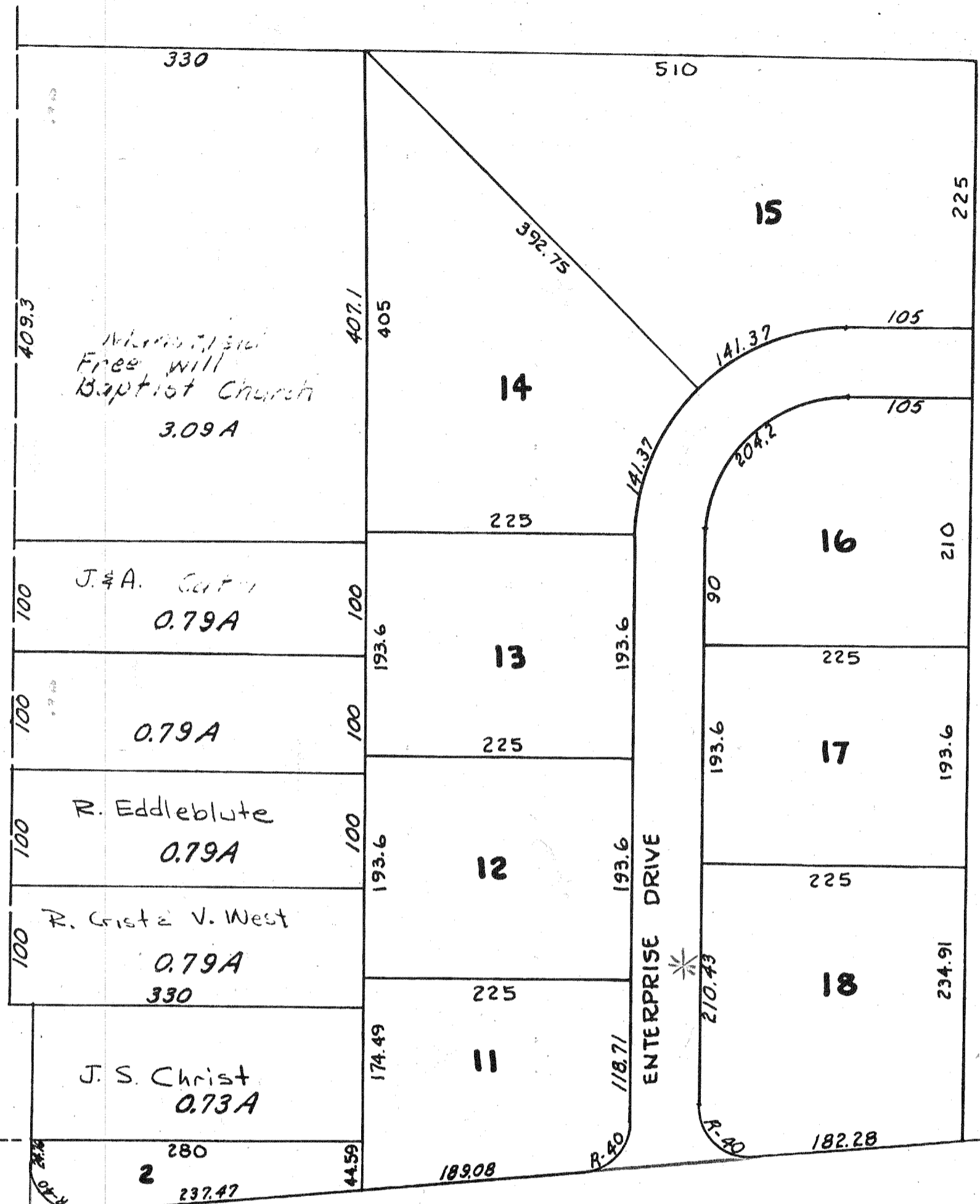


LAVEN RD. TH-273



Wm. M. 1910  
Free Will  
Baptist Church  
3.09 A

J. & A. Carter  
0.79 A

0.79 A

R. Eddleblute  
0.79 A

R. Crist & V. West  
0.79 A  
330

J. S. Christ  
0.73 A

2  
280  
237.47

TWINS LANE BOULEVARD \*

1  
280  
16.76

J. & R. Morris  
0.5 A

R. & E. Dudley  
0.85 A

2

0.55 A

S line NE Qr Sect. 18

ENTERPRISE CT. \*

6

7

YORKSHIRE CT. \*

10

5

8

9

T-23, R-17

MIFFLIN TWP  
NE QR. SECT. 18

Vol. 24, Page 8

S R-30 MANS. BY-PASS

MANSFIELD BUSINESS CENTER

\* NON-MAINTAINED Status  
9-27-07 ORV. 1793, P. 463

60