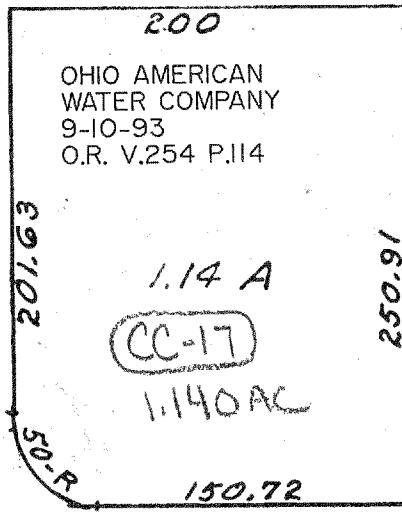


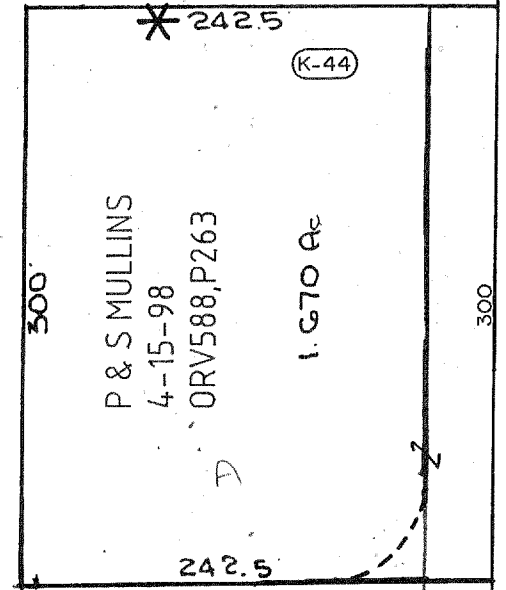
* THESE PARCELS NEED A S&E FOR THE AREAS THAT ARE IN DEDICATED ROAD R/W AS PLATTED IN PLAT VOL. 21, P. 13, 22, P. 37

** At one time area was platted in to lots - then was vacated - Streets are still Dedicated - Acreage Parcels can only go to R/W!

*** NON-MAINTAINED Status
9-27-07
ORV. 1793, Pg 463

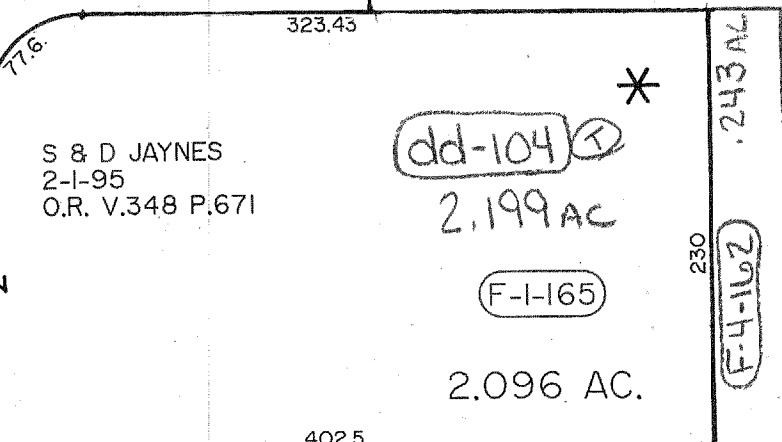


V.F. HARP & SONS
DV. 842, P. 745

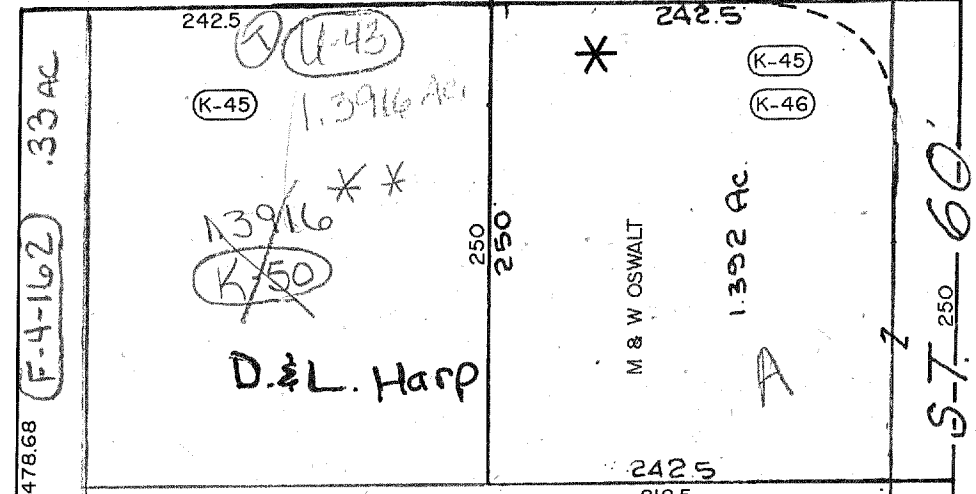


CHEROKEE AVENUE 60'

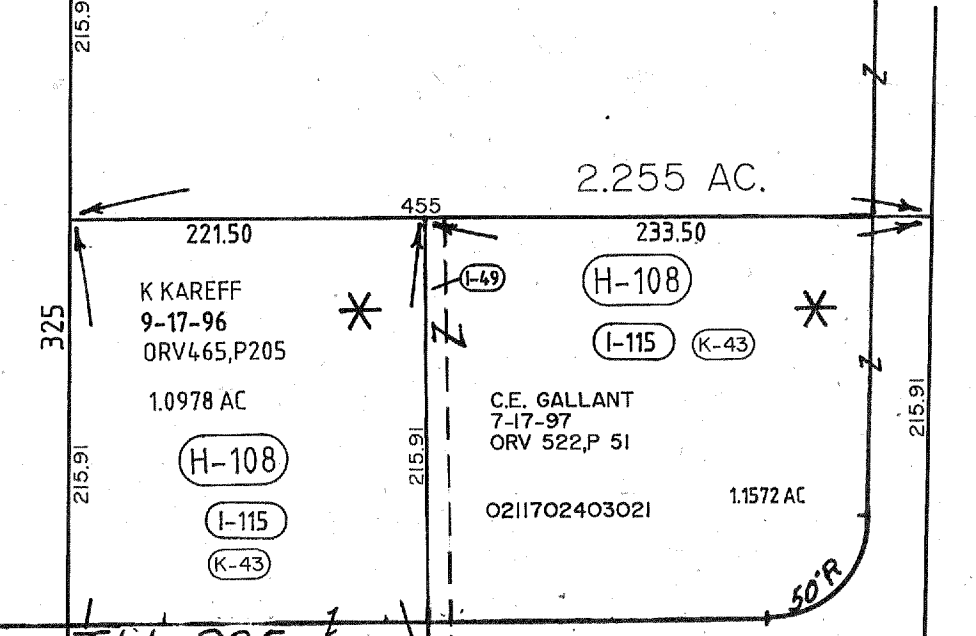
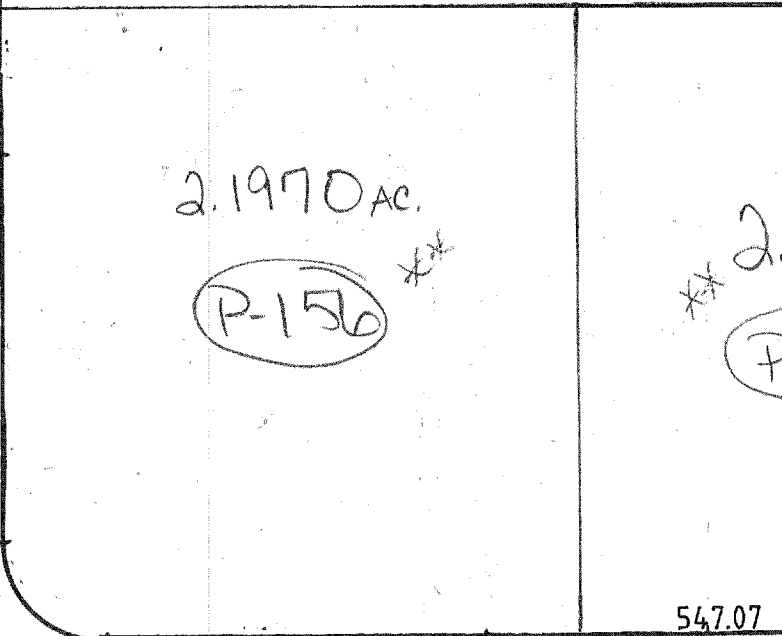
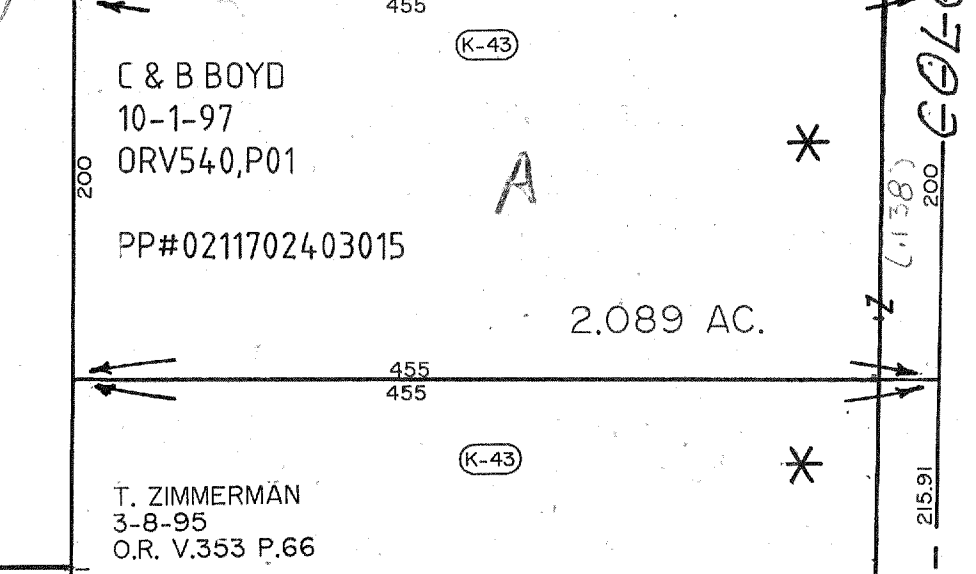
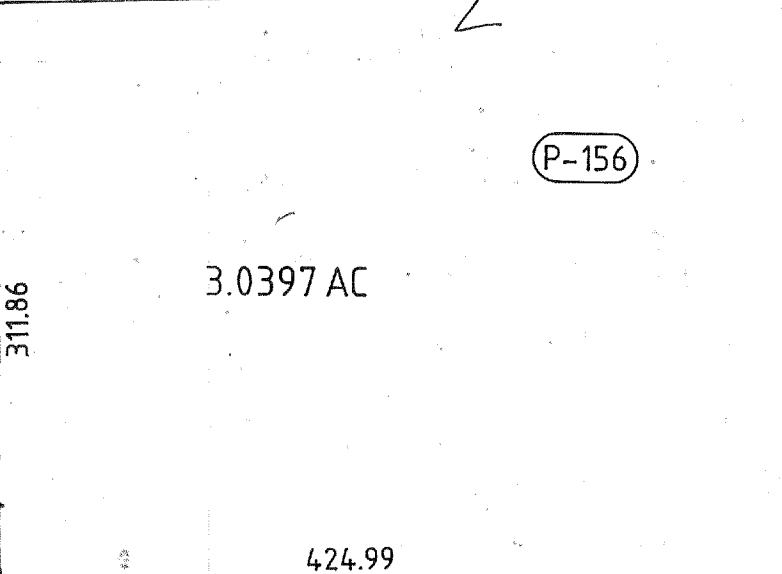
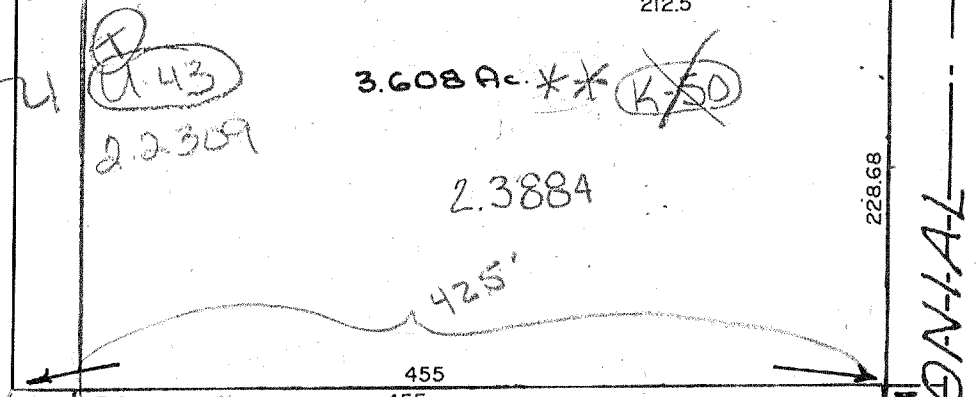
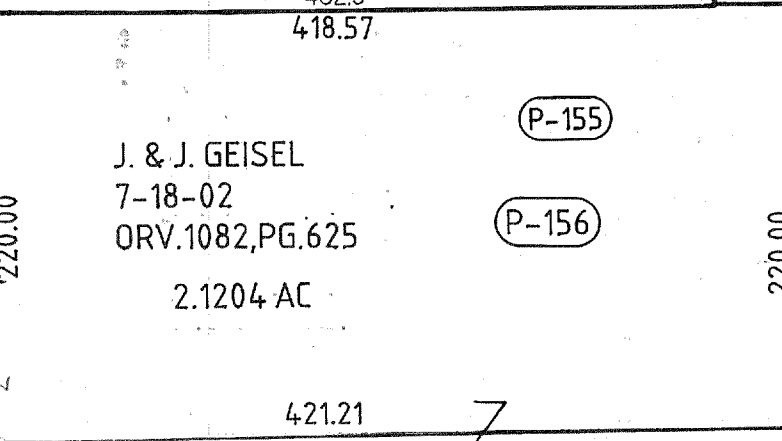
CHEROKEE AVENUE 60'



F-4-162
24,515 AC



REMAINING AC BY DV. 842, P. 745
1,329.7
CMC



ORV 352, P. 249
COCHISE
VACATED

PETERSON RD. TH-295
5 Line SW Qr. Section 21

Book 21, Page 130, Lot 1-28
22, 37
LOTS 8-26 AND 60-69 VAC. 10-17-83

T-23, R-17

1" = 100'

55

MOHICAN ESTATES SEC. A-B
Mifflin Twp., SW Qr. Section 21
Sect. "A", Lots #8 to 26
"B" " 60 - 69

9-5-02