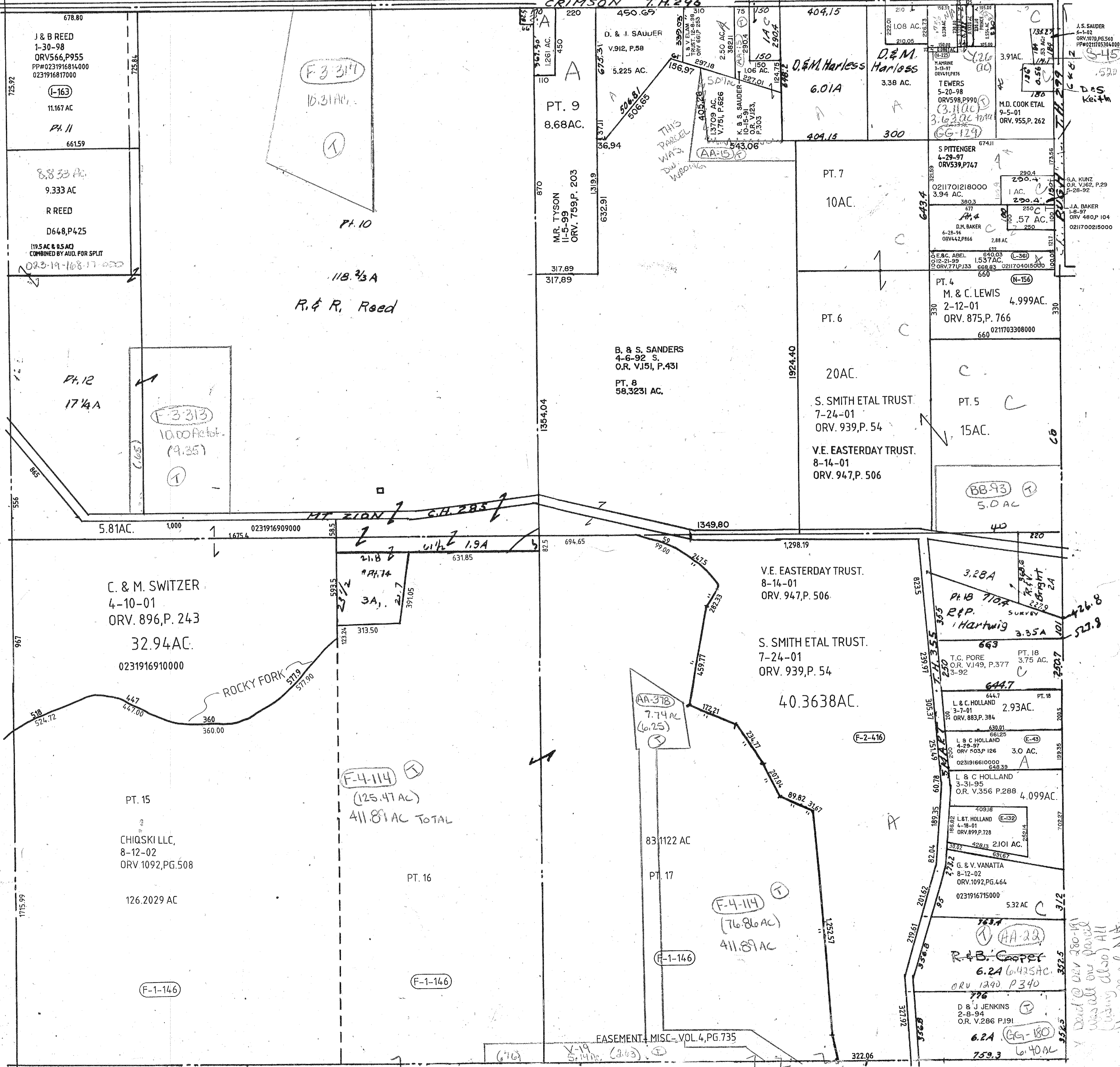


CRIMSON T.H.296



F-3-314  
10.31 AC

F-3-313  
10.00 Acre  
(9.85)

F-4-114  
(125.47 AC)  
411.89 AC TOTAL

F-4-114  
(76.86 AC)  
411.89 AC

HA-22  
R & B Cooper  
6.24 6.425 AC  
ORV 1290 P340

Handwritten note: "Hand @ ORV 280-14 was all on parcel (using also) All other parcel N/A"