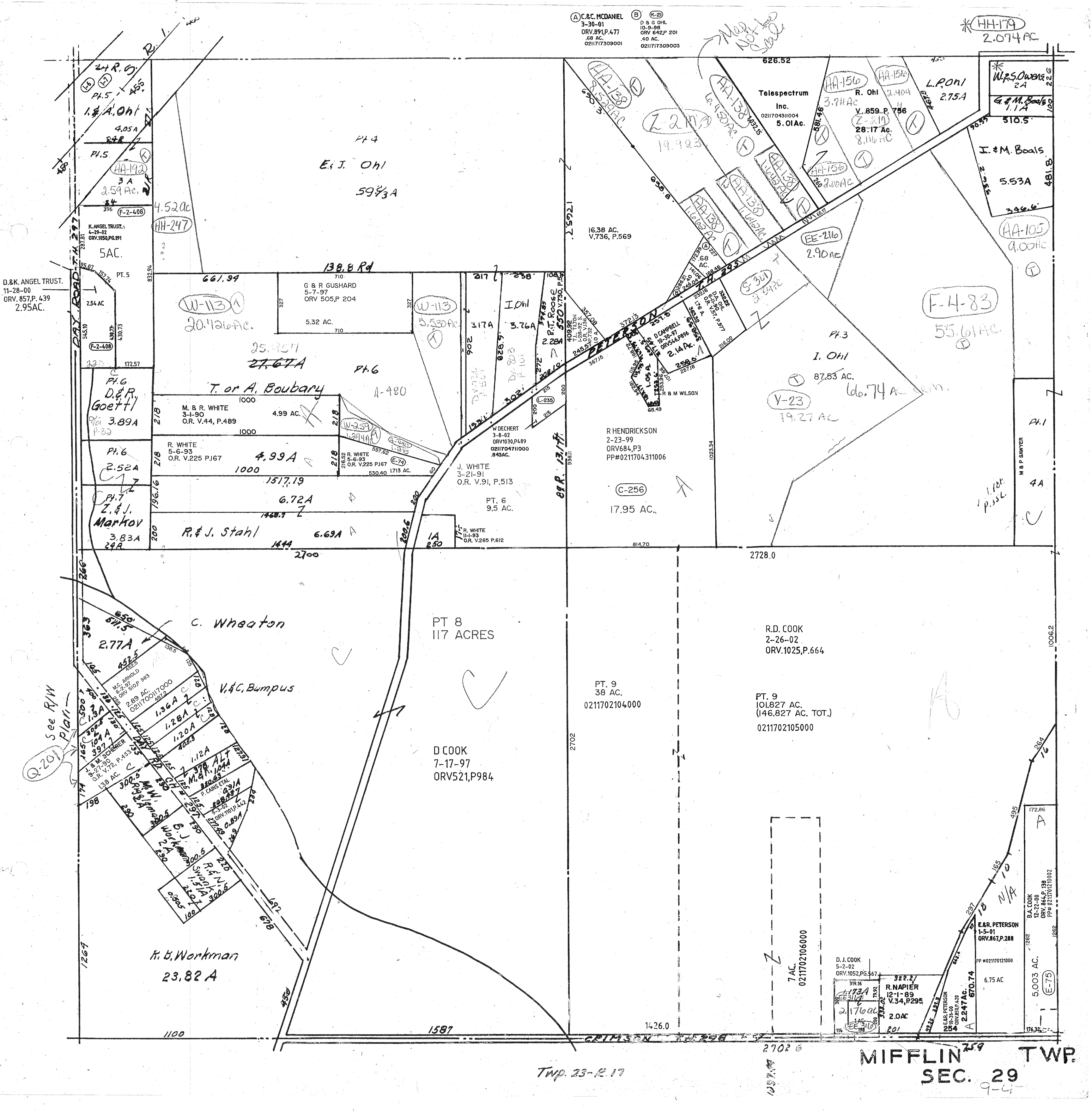


A C.C. MCDANIEL  
3-30-01  
ORV.891,P.477  
.68 AC.  
0211717309001

B (K-2)  
D & G OHL  
10-9-98  
ORV.642,P.201  
.40 AC.  
0211717309003

HH-179  
2.074 AC



D.&K. ANGEL TRUST.  
11-28-00  
ORV. 857, P. 439  
2.95 AC.

See R/W  
Plan  
Q-201

MIFFLIN TWP.  
SEC. 29

Twp. 23-R-17

9-4