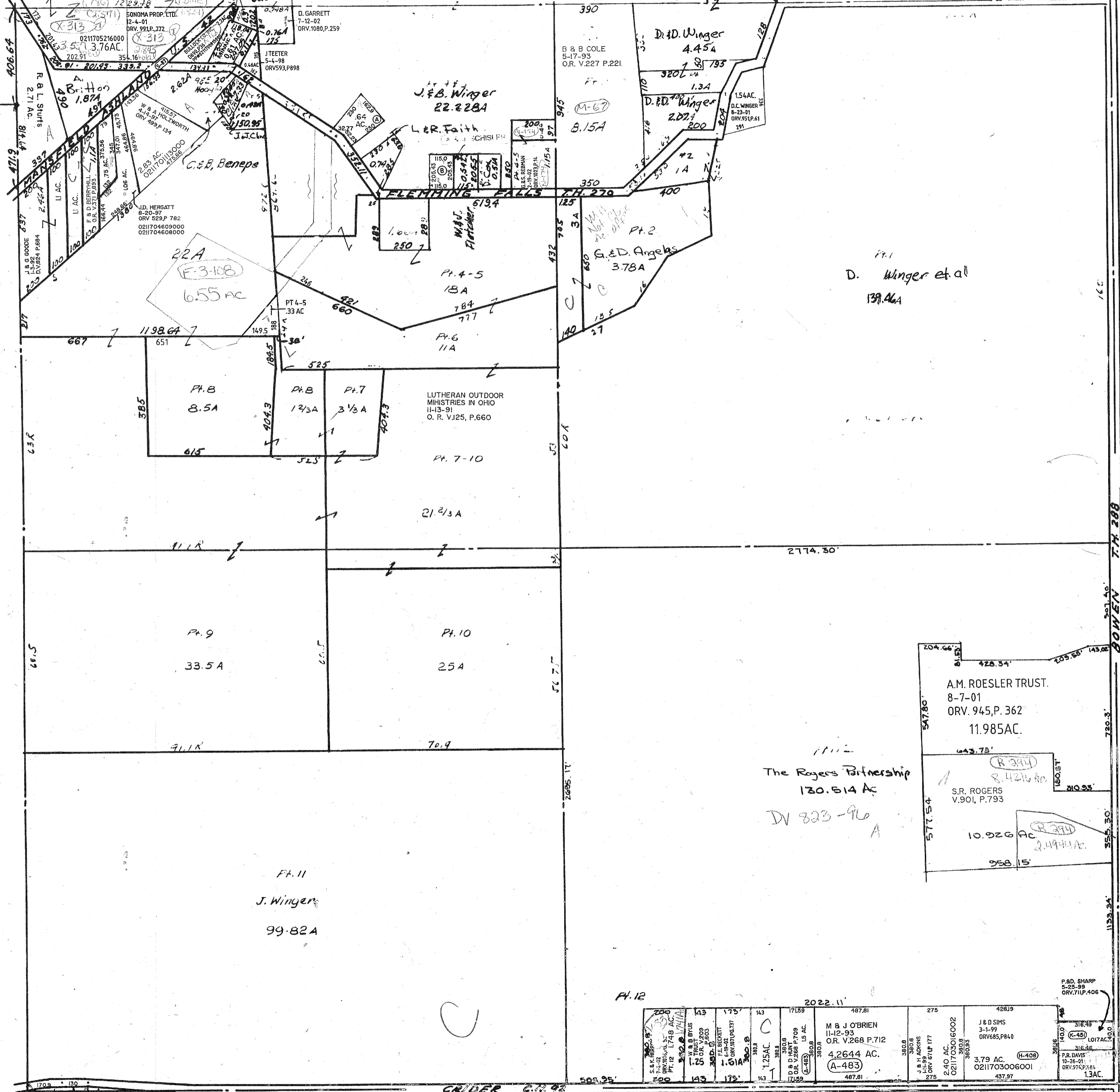


(B) J.W. JEFFRIES  
 6-13-01  
 ORV. 922, P. 291  
 54.2AC.  
 0211701303000

(A) L & T POTH  
 4-16-98  
 ORV 588, P. 706  
 .64 AC.  
 021170410000



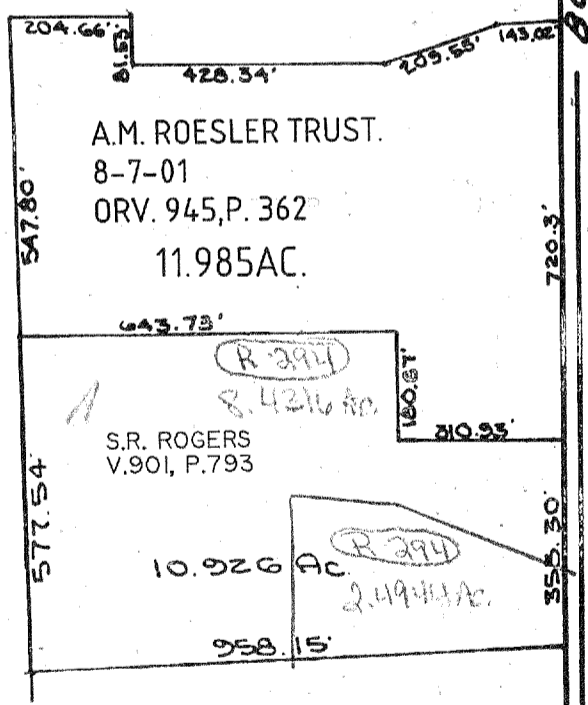
E.G. GROFF  
 2-18-97  
 ORV 488, P. 228  
 PT. II  
 18 AC.  
 0211702107000

J. & J. McMillen  
 O.16A

Twp. 23-R.17

S.M. SPECK TRUST.  
 1-4-02  
 ORV.1005, P.603  
 1.25AC.  
 0211703016004

MIFFLIN TWP. SEC. 8  
 7-15-02



S.E.K. HERRING 7-2-02 ORV. 1016, P. 174 PT. 12 1.748 AC	W.A.B. BYUS 3-1-99 ORV. 209, P. 803	F.E. BERRYETT 3-1-99 ORV. 1016, P. 174	D.B. D. HUNT 1-1-99 ORV. 1016, P. 174	M & J O'BRIEN 11-12-93 O.R. V.268 P.712 4,264.4 AC. (A-483)	J.B. H. ADAMS 1-1-99 ORV. 674, P. 177	J & D SIMS 3-1-99 ORV. 685, P. 840	P.R. DAVIS 12-26-01 ORV. 972, P. 884
---	---	--	---	---	---	--	--

BOWEN T.H. 288