

⑤ S.D. HAIRSTON
4-19-01
ORV. 900, P. 78
567AC.
0211706213000

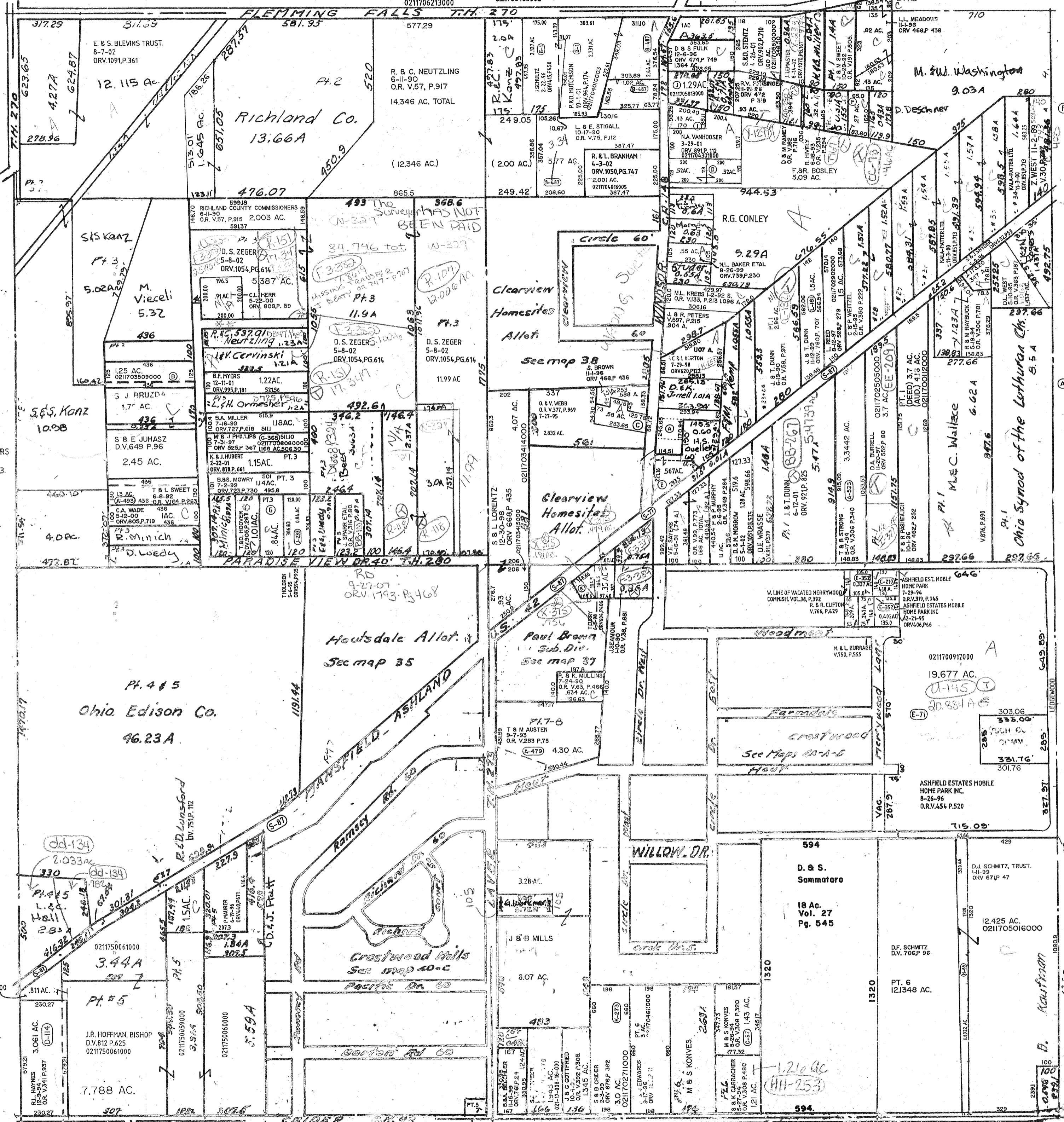
⑥ M.J. SANDEL
1-3-01
ORV. 866, P. 383
58 AC.
0211705403002

⑦ R.A. McDONALD
11-9-00
ORV. 853, P. 461

⑧ E & H DAUGHTERY
6-18-96
ORV. 489, P. 983
43 AC.
0211701817000

⑨ J.L. THOMAS
5-15-01
ORV. 909, P. 875
1.29AC.

⑩ T.R. CURRY TRUST
7-18-02
ORV. 1082, PG. 652
32 AC



⑪ M.E. MANN
2-25-98
ORV. 573, P. 66
1.25 AC.
0211703509000

⑫ W. & D. SAUNDERS
7-5-02
ORV. 1077, PG. 74.3
86AC.

⑬ E. & C. MABRY
5-14-01
ORV. 909, P. 384
0211703614000
.27AC.

⑭ K.M. HARROD
7-17-01
ORV. 936, P. 109
1.01AC.
(L-252)

1196.5 * RD. EASEMENT. P.V. 30, P.16
** PARADISE VIEW COURT 9-27-07 ORV. 1793 P. 466

S. & S. KANZ
9-29-00
ORV. 838, P. 438
0211700412000
25AC.

MAP 23 R.17

MIFFLIN TWP. SEC. 7