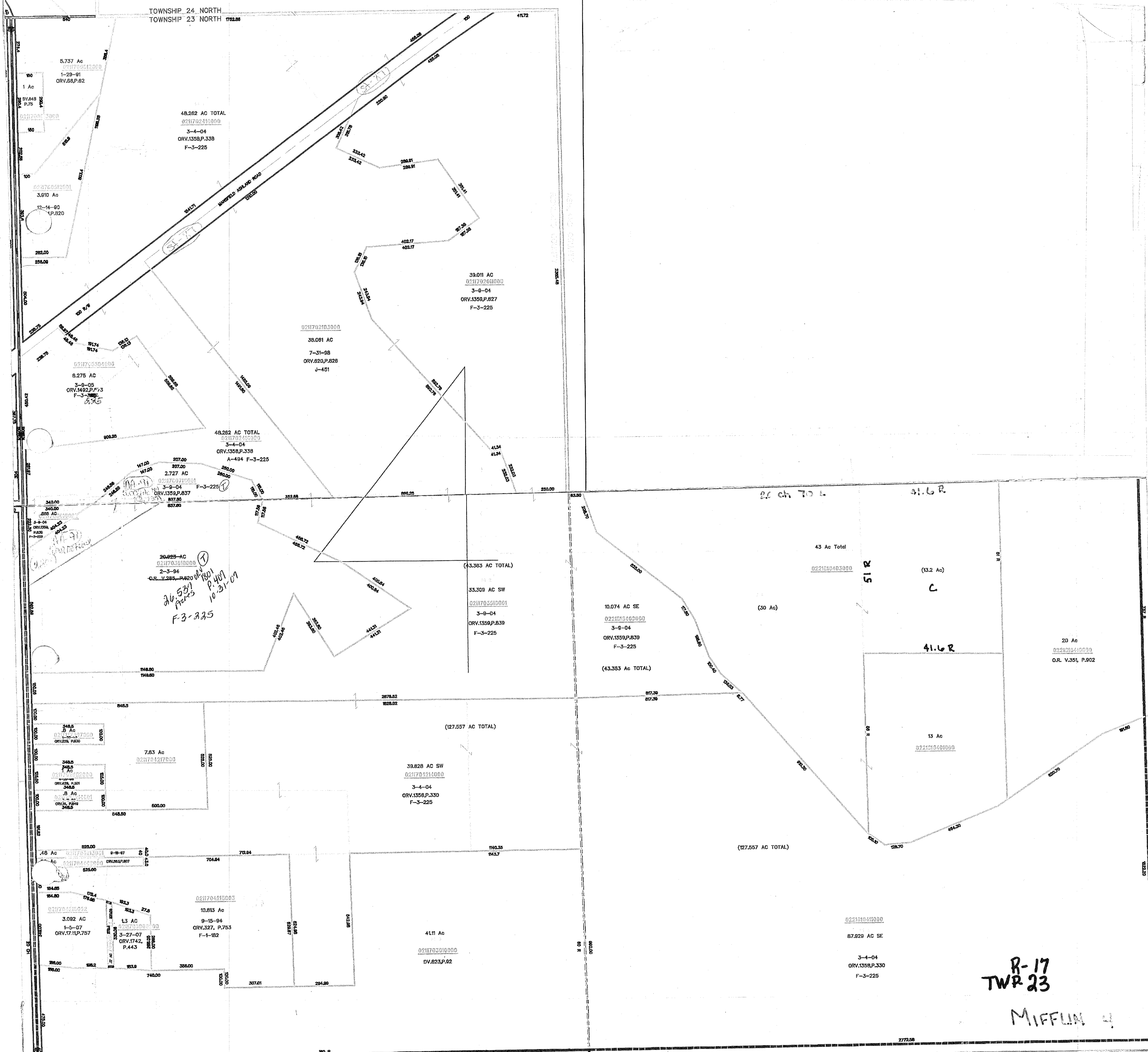


TOWNSHIP 24 NORTH
TOWNSHIP 23 NORTH 1762.88



5.737 Ac
1-28-91
ORV.88,P.82

48.262 AC TOTAL
3-4-04
ORV.1359,P.338
F-3-225

39.011 AC
3-9-04
ORV.1359,P.827
F-3-225

38.081 AC
7-31-98
ORV.820,P.828
J-451

8.275 AC
3-9-05
ORV.1492,P.73
F-3-225

48.262 AC TOTAL
3-4-04
ORV.1359,P.338
A-494 F-3-225

2.727 AC
3-9-04
ORV.1359,P.837
F-3-225

30.925 AC
2-3-94
O.R. V.285, P.820
F-3-225
*26.531 Acres
10-31-07*

43.383 AC TOTAL
3-9-04
ORV.1359,P.839
F-3-225

10.074 AC SE
3-9-04
ORV.1359,P.839
F-3-225

43 Ac Total
3-9-04
ORV.1359,P.839
F-3-225

20 Ac
O.R. V.351, P.902

7.83 Ac
3-4-04
ORV.1359,P.330
F-3-225

39.828 AC SW
3-4-04
ORV.1359,P.330
F-3-225

41.11 Ac
DV.823,P.92

3.092 AC
1-5-07
ORV.171,P.757

13 AC
3-27-07
ORV.1742,
P.443

10.813 Ac
9-15-94
ORV.327, P.753
F-1-182

87.828 AC SE
3-4-04
ORV.1359,P.330
F-3-225

**R-17
TWR 23**

MIFFLIN 4