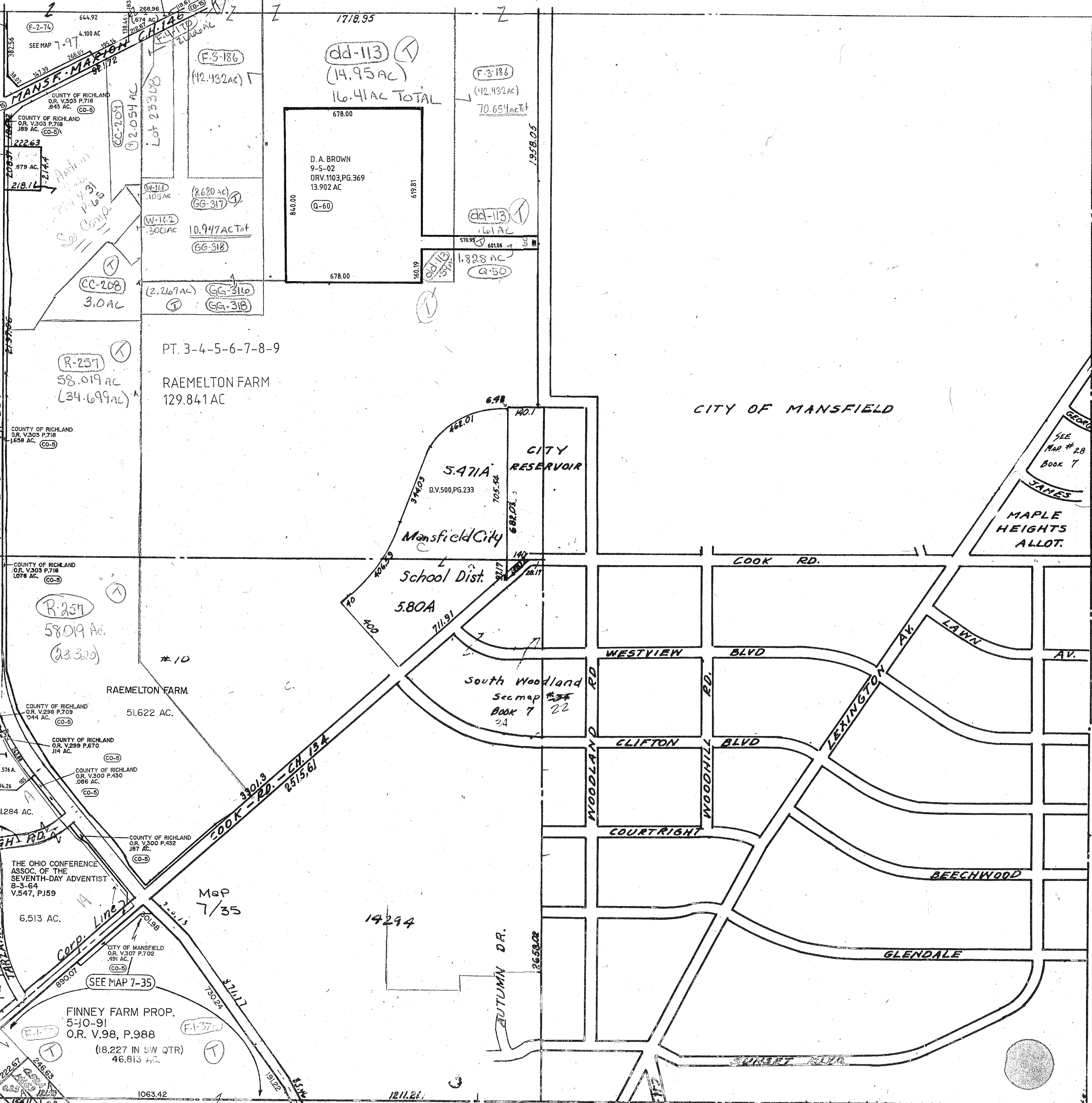


J & M BLACK
12-29-97
ORV 560, P. 444

COUNTY OF RICHLAND
O.R. V.300 P.321
442 AC.
CO-5

COUNTY OF RICHLAND
O.R. V.303 P.718
181 AC.
CO-5



R-257
58.019 AC
(34.699 AC)

dd-113
(14.95 AC)
16.41 AC TOTAL

R-257
58.019 AC
(23.320)

5.471A
D.V.500, PG.233
Mansfield City

FINNEY FARM PROP.
5-JO-91
O.R. V.98, P.988
(18.227 IN SW QTR)
46.813 AC.

CITY OF MANSFIELD

SEE
MAP # 28
BOOK 7
JAMES
MAPLE
HEIGHTS
ALLOT.

M. & D. ATKSON
8-11-86
V.622, P.623
.067 AC.

GOSPEL ASSEMBLY CHURCH
8-12-96
O.R.V.451 P.917

VACATED
9-6-00
ORV. 835, P. 138

GLENLEIGH, TARZANA
TRIMBLE RD.
PLAT V. 21, P. 41

S.B. HAMLIN

T & B NEFF
3-23-93
O.R. V.215 P.472
.344 AC.

SEE MAP
7/47

Twp. 21-R. 18

AV. 31, P. 102

MADISON TWP.
SEC. 92
9-6-00