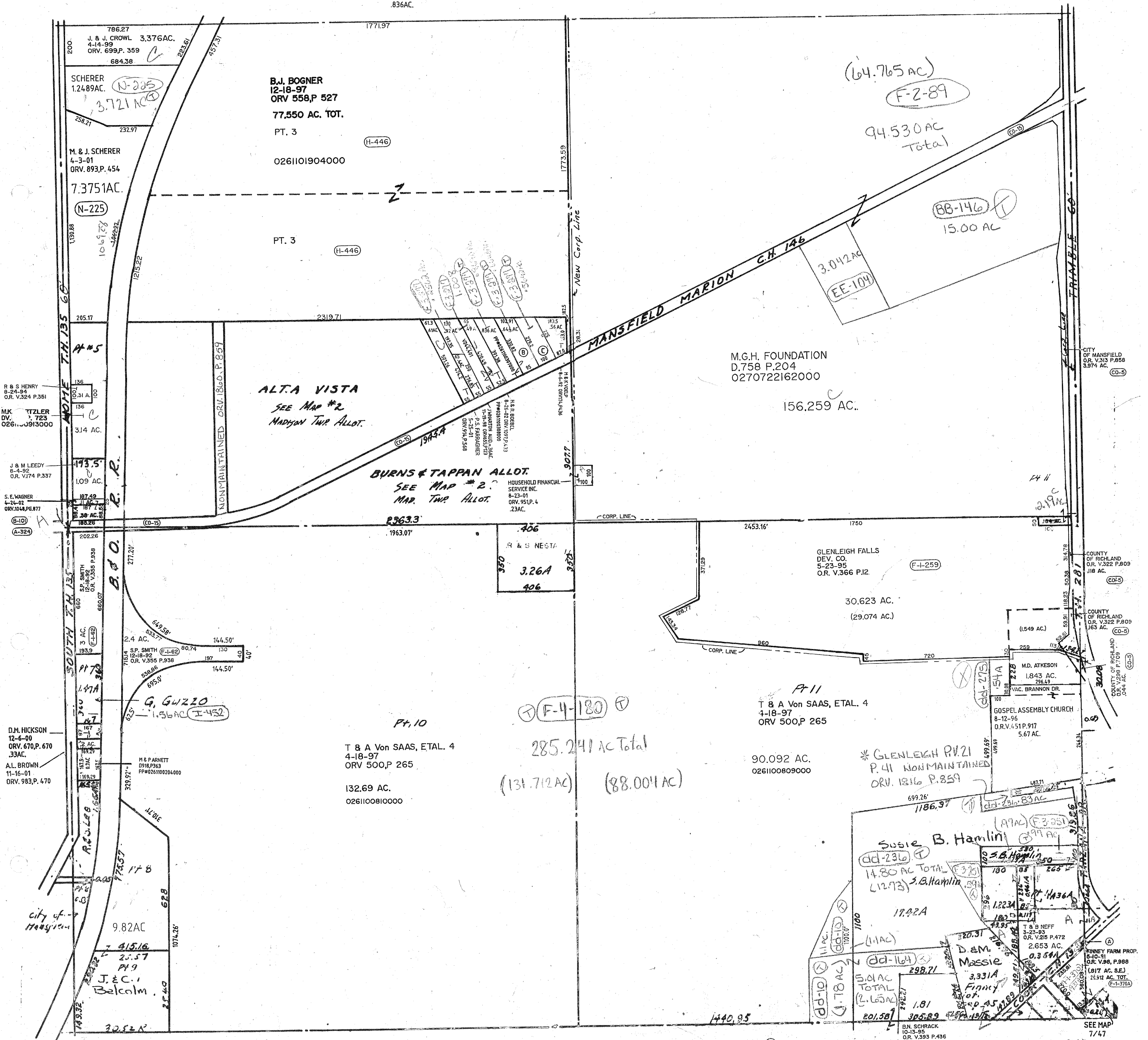


M.L. BOEBEL  
1-8-02  
ORV.1006,P.809  
64.4AC.  
836AC.

C.M.L. BOEBEL  
2-26-02  
ORV.1025,P.440  
0261100305000



(64.765 AC)  
F-2-89  
94.530 AC  
Total

B.J. BOGNER  
12-18-97  
ORV 558,P 527  
77.550 AC. TOT.  
PT. 3  
0261101904000

ALTA VISTA  
SEE MAP #2  
MADISON TWP ALLOT.

BURNS & TAPPAN ALLOT.  
SEE MAP #2  
MADISON TWP ALLOT.

M.G.H. FOUNDATION  
D.758 P.204  
0270722162000

156.259 AC.

R & S NESTA  
350  
3.26A  
406

GLENLEIGH FALLS  
DEV. CO.  
5-23-95  
ORV. V.366 P.2.

30.623 AC.  
(29.074 AC.)

T & A Von SAAS, ETAL. 4  
4-18-97  
ORV 500,P 265

285.241 AC Total  
(131.712 AC) (88.004 AC)

T & A Von SAAS, ETAL. 4  
4-18-97  
ORV 500,P 265  
132.69 AC.  
0261100810000

\* GLENLEIGH P.41  
P.41 NON MAINTAINED  
ORV. 1816 P.859

Susie B. Hamlin  
14.80 AC TOTAL  
(12.93) S.B. Hamlin

D.E.M. Massie  
3.331A  
TOTAL  
(2.652A)

DICK THOMAS & CO. INC.  
7-8-97  
ORV 520,P 283  
(003 AC.)  
F-1-370  
15.53 X 17.62  
F-1-370A

MADISON TWP  
SEC 31  
10-22-02

SEE MAP  
7/47