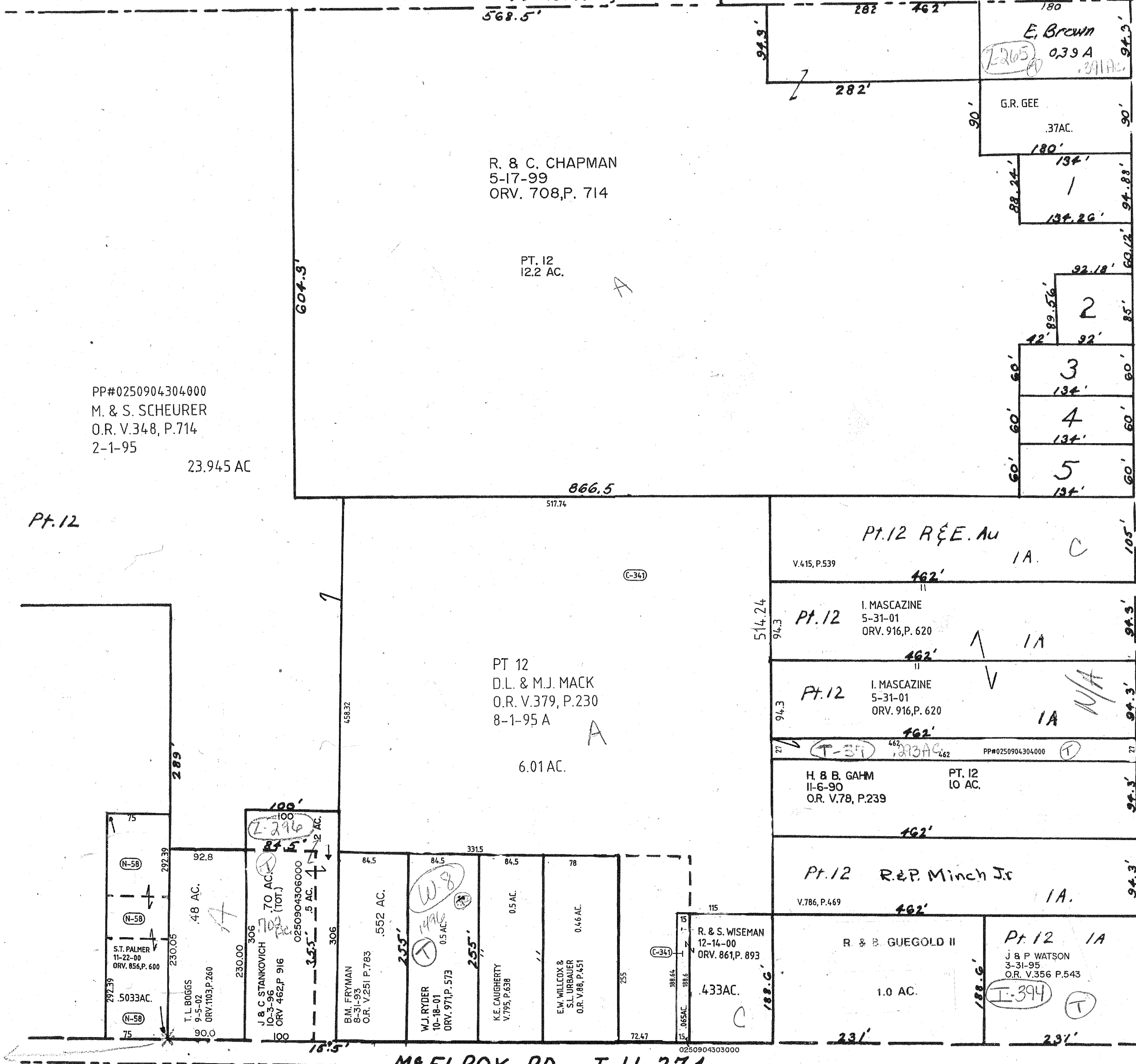


N Line, SE Qr. Sect 24



PP#0250904304000
 M. & S. SCHEURER
 O.R. V.348, P.714
 2-1-95
 23.945 AC

PT. 12

R. & C. CHAPMAN
 5-17-99
 ORV. 708, P. 714

PT. 12
 12.2 AC.

PT 12
 D.L. & M.J. MACK
 O.R. V.379, P.230
 8-1-95 A
 6.01 AC.

PT. 12 R & E. AU
 1A C

PT. 12
 I. MASCAZINE
 5-31-01
 ORV. 916, P. 620
 1A

PT. 12
 I. MASCAZINE
 5-31-01
 ORV. 916, P. 620
 1A N/A

H. & B. GAHM
 11-6-90
 OR. V.78, P.239
 PT. 12
 10 AC.

PT. 12 R & P. Minch Jr
 1A.

R. & S. WISEMAN
 12-14-00
 ORV. 861, P. 893
 433 AC.

R & B. GUEGOLD II
 1.0 AC.

PT. 12 1A
 J. & P. WATSON
 3-31-95
 O.R. V.356 P.543
 I-394

E Line, SE Qr. Sect 24
 T.H. 425
 FORD RD.

M. ELROY RD. - T.H. 274

T-21, R-18

Madison Twp.

NE Pt., SE Qr. Sect. 24

LEHIGH-TERRACE ALLOT.
 Lots # 1-5 Vol. 21 Page 99