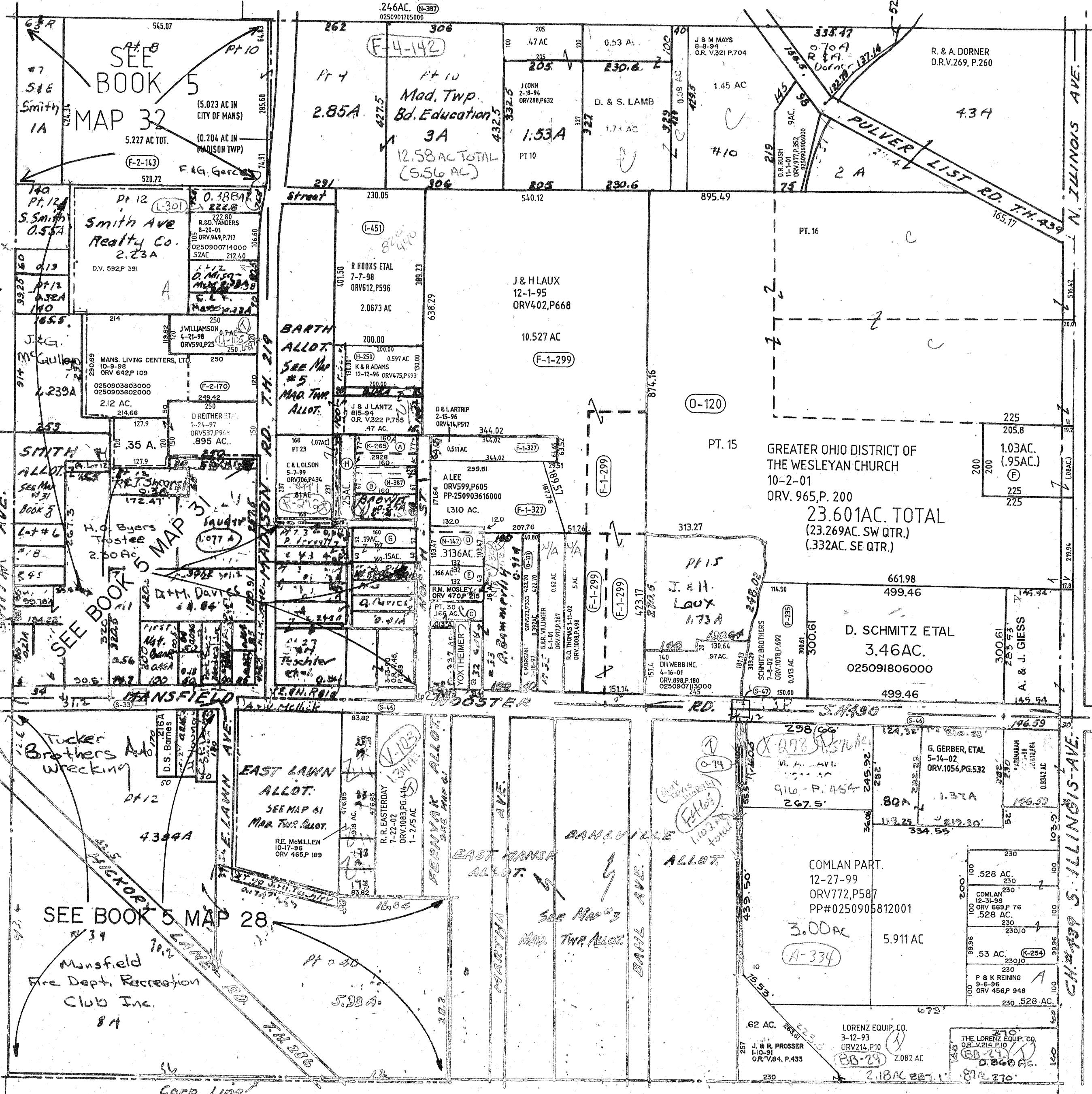


- (A) M.A. BILICK
L-4-99
ORV 669.P 393
(K-265)
0250901706000 — .2828 AC.
- (B) A.L. EVANS ETAL
7-2-01
ORV. 930.P. 410
.246AC. (N-387)
0250901705000
- (C) B & R THOMAS
4-23-97
ORV 501.P 213
.166 AC.
- (D) T.R. ALLRED
5-24-01
ORV. 914.P. 98
.3136AC. (N-162)
- (E) K HARRIS
6-16-00
ORV814.P683
PP#0250901712000



(H) W. & S. WEDDELL
9-19-01
ORV. 960.P. 270
AC.
0906817000

(I) NORTH CENTRAL OHIO
COMMUNITY DEVELOP. CORP.
6-12-01
ORV. 921.P. 706
0250950073000
0250950074000

(J) T. Beck
D.V. 736.P. 2162
.25 AC.

(K) L. & E. Stigall

(F) P.M. ACKERMAN
8-2-79
DV. 793.P. 499
025090810000

TWP 21 R. 18

1"=200'

MADISON TWP.
S.W. 1/4, SEC. 28
Scale 1"=200'

7-2