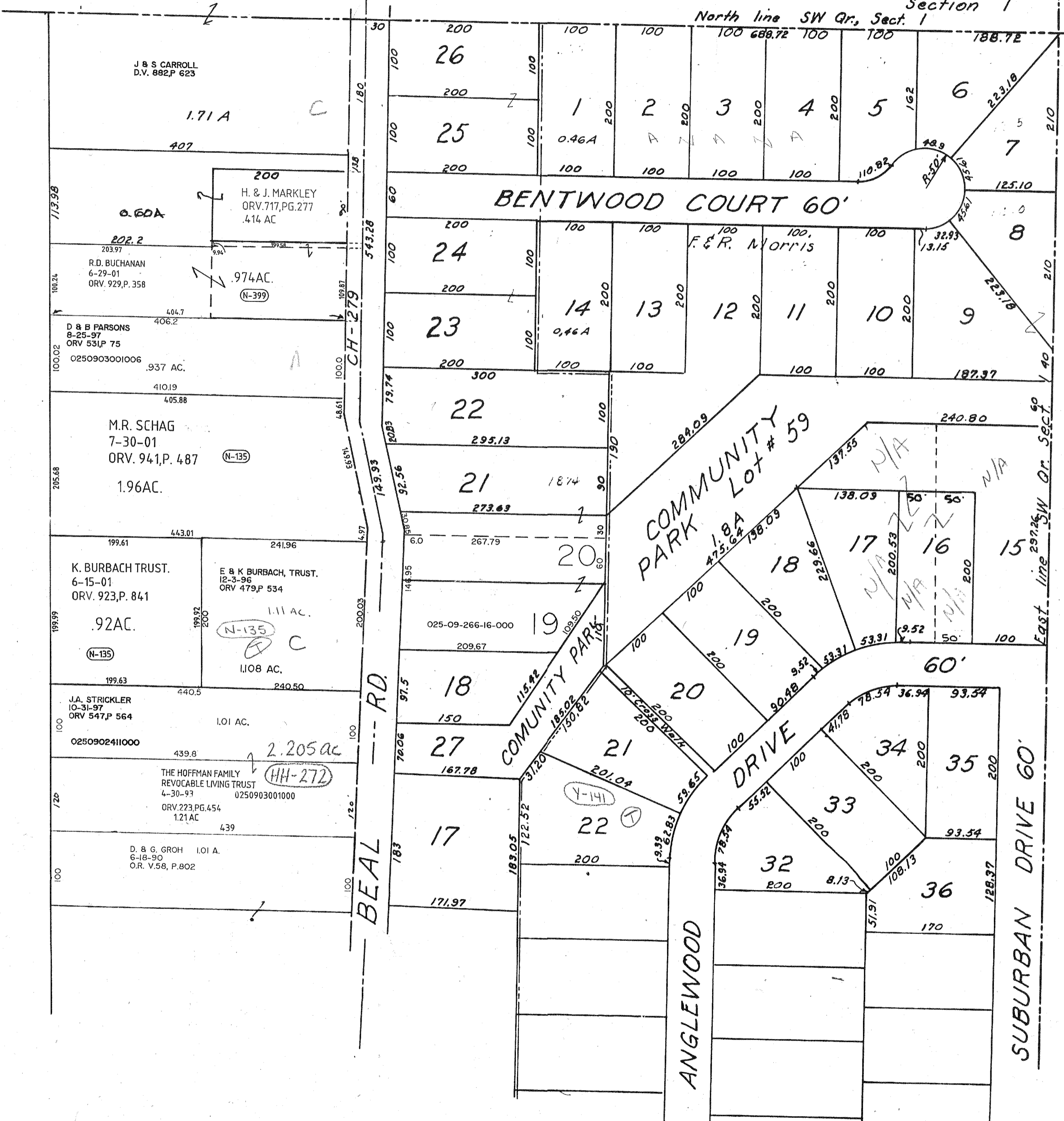


NE Cor., SW Qr.
Section 1

North line SW Qr., Sect. 1



J & S CARROLL
D.V. 882, P. 623

1.71 A

0.60A

202.2

R.D. BUCHANAN
6-29-01
ORV. 929, P. 358

D & B PARSONS
8-25-97
ORV 531, P. 75

0250903001006

M.R. SCHAG
7-30-01
ORV. 941, P. 487

1.96AC.

K. BURBACH TRUST.
6-15-01
ORV. 923, P. 841

.92AC.

E & K BURBACH, TRUST.
12-3-96
ORV 479, P. 534

1.11 AC.

1.108 AC.

J.A. STRICKLER
10-31-97
ORV 547, P. 564

0250902411000

1.01 AC.

THE HOFFMAN FAMILY
REVOCABLE LIVING TRUST
4-30-97

0250903001000

ORV. 223, P. 454

1.21 AC.

D. & G. GROH
6-18-90
O.R. V. 58, P. 802

1.01 A.

T-21, R-18
Vol. 20 Page 147

MORRIS MANOR
Pt. SW Qr. SECT 1
MADISON TWP.
Richland County

129

7-24-02