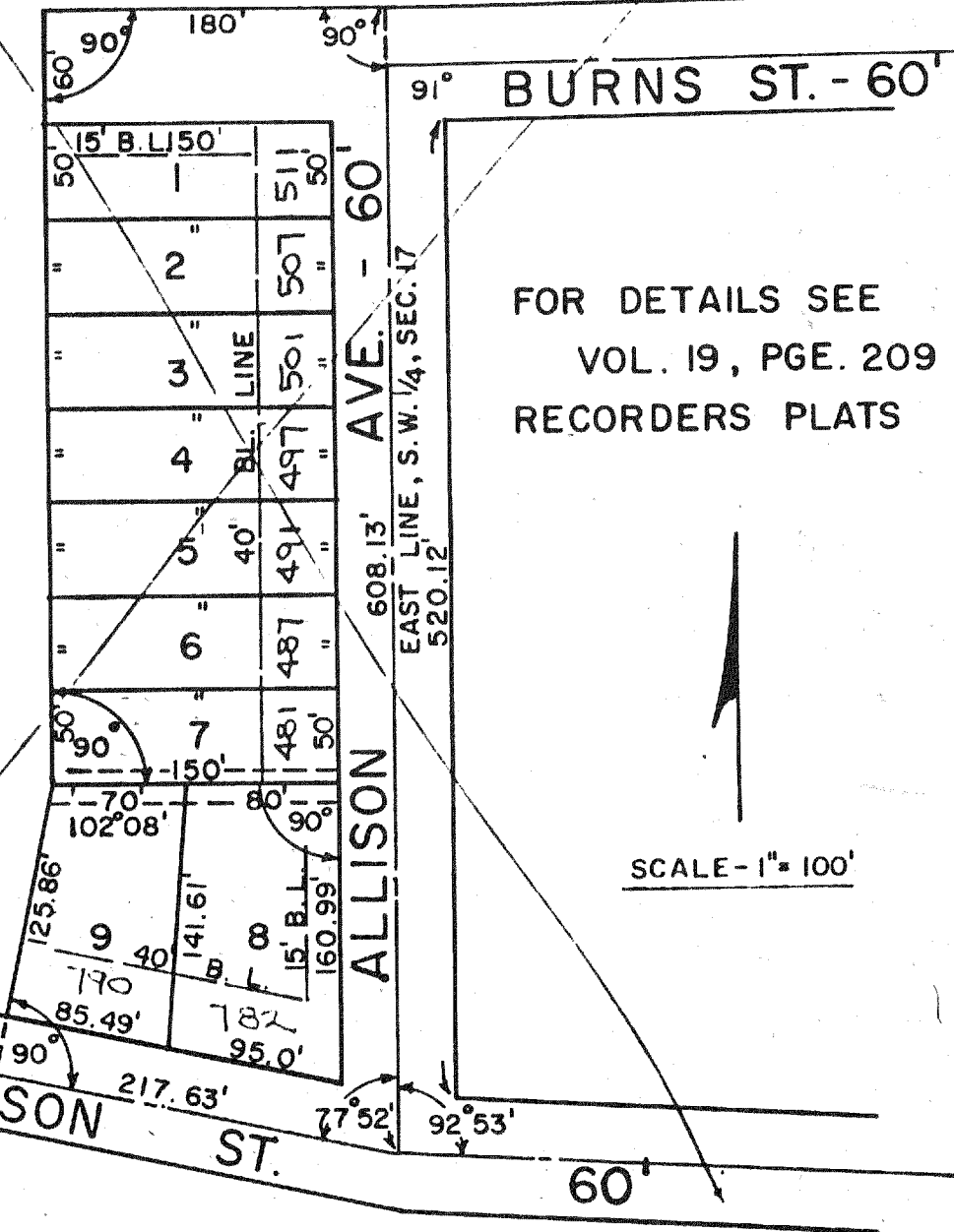


**BERTKA ALLOT.**  
 PT. OF S.W. 1/4, SEC. 17  
 MADISON TWP.



FOR DETAILS SEE  
 VOL. 19, PGE. 209  
 RECORDERS PLATS

← MAXWALTON GLENS  
 Pt. SE 1/4, Sec. 36, Madison Twp.  
 For details see Vol. 19 P. 38 Recorders Plats  
 MADISON TWP. ALLOTS.