

C.H. 116

200' B. & M. MOSIER 435.5'

Pt. # 4

O.M. Stull

79 A.

Pt. # 5

L.M. Leedy

80 A.

Pt. # 6

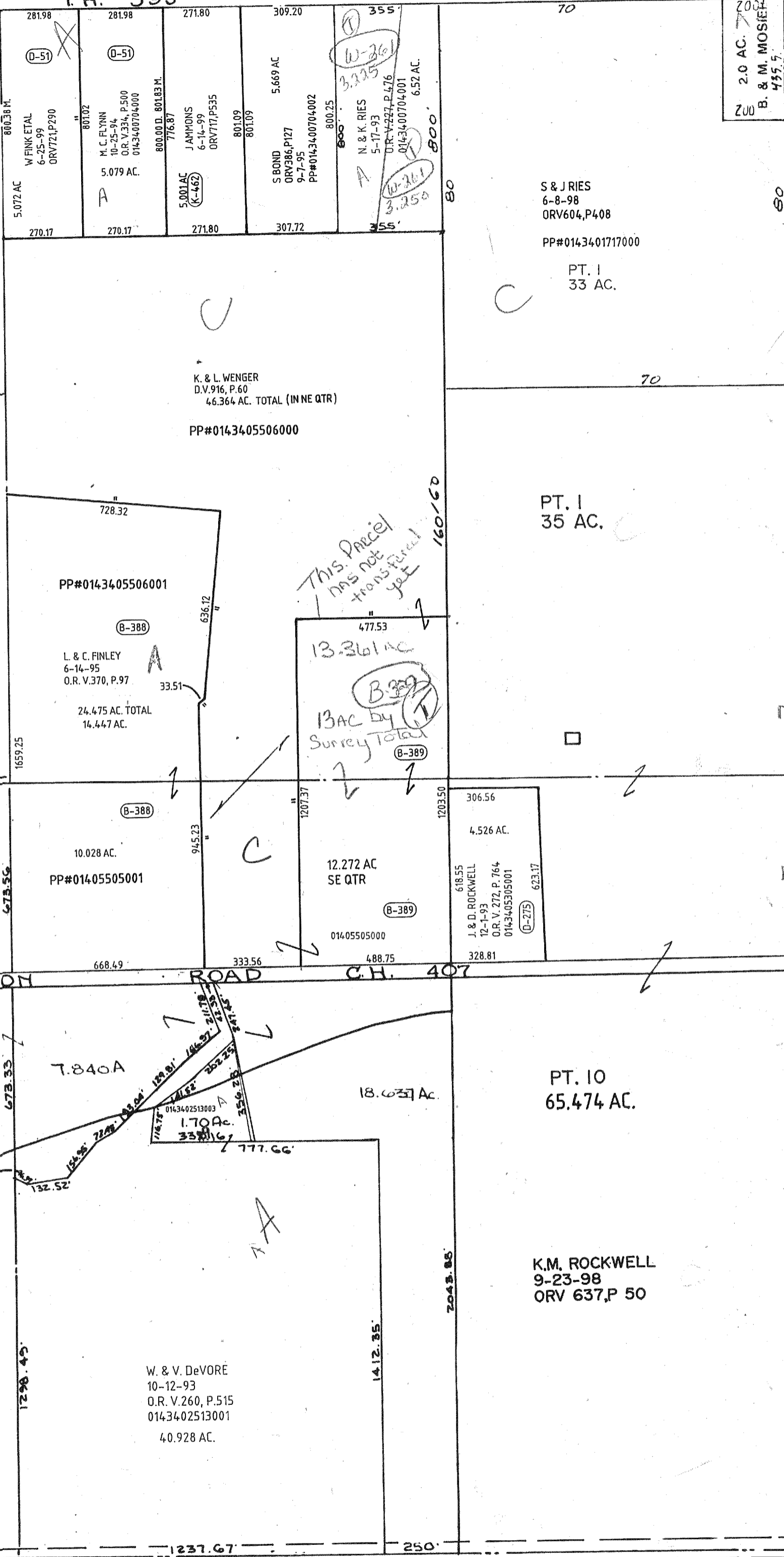
C. & L. Leedy

40 A.

Pt. # 8

C & C LEEDY  
8-3-95  
O.R. V.379 P.582  
76.238 AC.  
014-34-001-11-000

247.49  
655.71  
G. & L. BLUBAUGH  
11-2-95  
O.R.V. 397, P. 445  
583.48 3,762 AC.



ANKNEYTOWN

HAMILTON ROAD

C.H. 407

LEEDY



7-9-02