

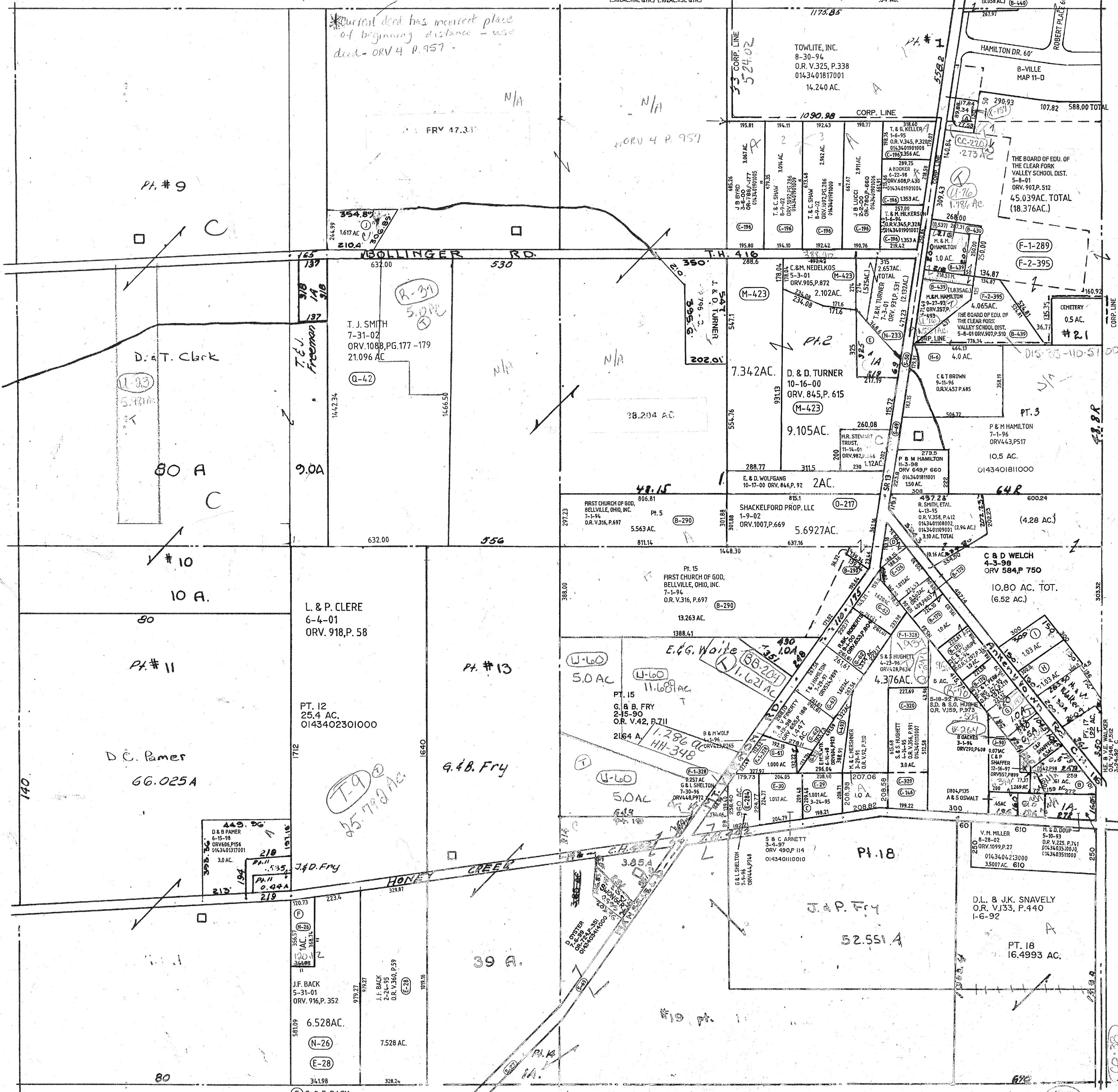
J. & K. BROKAW
3-2-88
DV.904,P.510

C. & F. KVOCHICK
7-2-96
ORV.443,P.440
544AC.TOTAL
(.382AC.=NE QTR.) (.162AC.=SE QTR.)

G. & T. BALLIET
DV.690,P.147

M & C YOUNG
7-8-97
ORV.520,P.255
.34 AC.

L. & E. PITTENGER
10-4-93
O.R.V.259,P.643
0153511039000
(0.058 AC.) (B-440)



H R. & M. KNUCKLES
ORV.904,PG.34

I R. D. KNUCKLES
1-17-95
ORV.346,PG.410

F C. & F. BACK
5-31-01
ORV.916,P.350
1AC. (N-26)

G K. & S. SANSON
9-4-01
ORV.954,P.674
1AC. (S-112)

Twp. 19-R.18

C E.M. MULWYK
12-8-95
ORV.403,P.873
1COI AC.
014340110008

B C & D STEMPLE
11-4-98
OV.650,P.132
61 AC.
0143402410000
J59 AC.
0143402409000

JEFFERSON TWP.
SEC. 16

8-12-0

* See Comp. for map incorrect