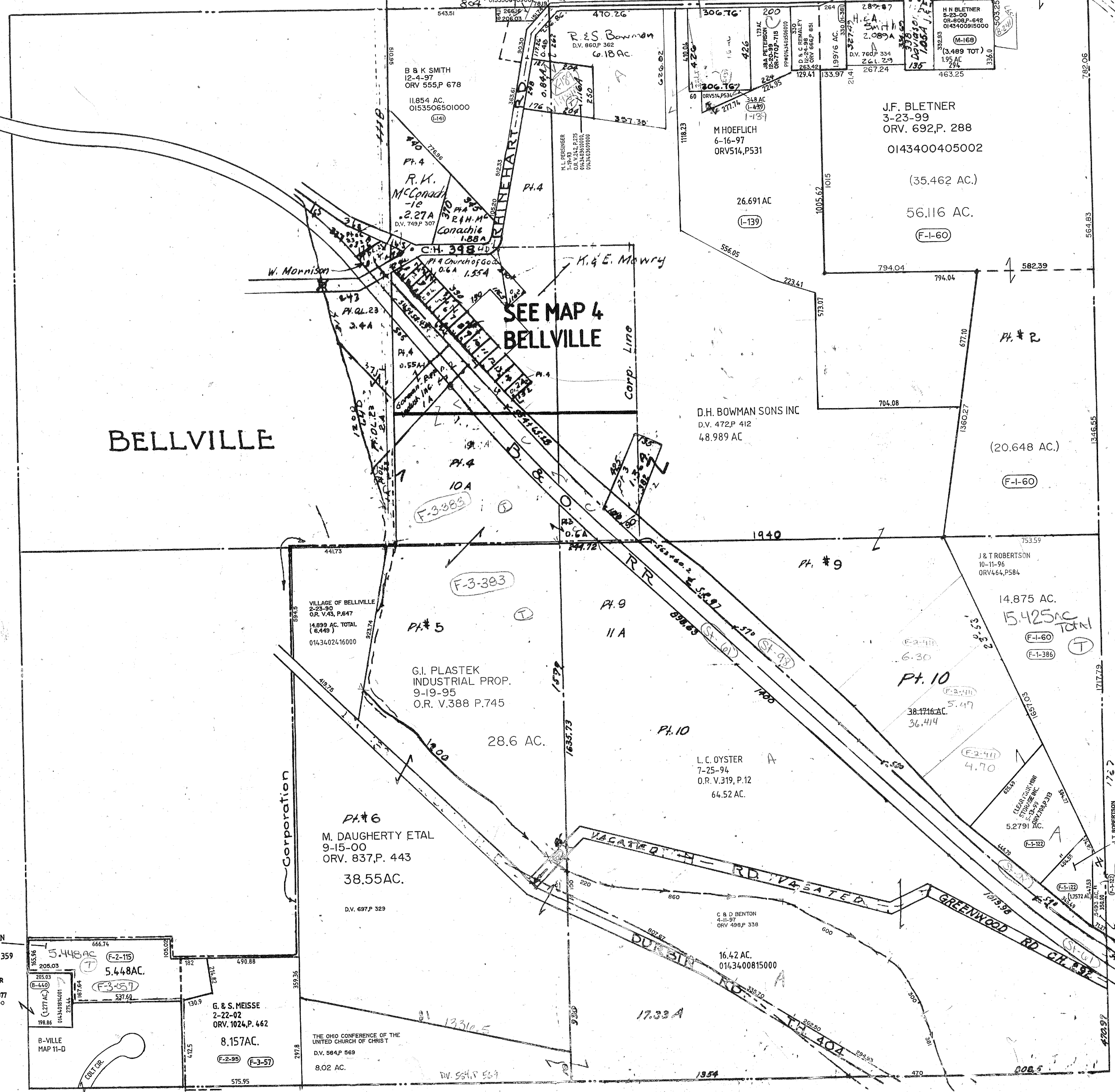


(355 AC. NW 1/4)
(0.010 AC. NE 1/4)
365 AC. TOT.

6.431
50261
3.055A

Q-321



BELLVILLE

SEE MAP 4
BELLVILLE

JEFFERSON TWP.
SEC. 10 7-1-00 99

R. & K. AMLIN
1-8-01
ORV. 867, P. 359

S. & S. KISTLER
3-25-02
ORV. 1035, PG. 377
0153511048000

5.448 AC
666.74
205.03
182
490.88
105.02
187.64
537.69
1277 AC
198.86
014340814001
275.44
B-VILLE
MAP 11-D
CORP. DR.

G. & S. MEISSE
2-22-02
ORV. 1024, P. 462
8.157 AC.
F-2-99
F-3-57
575.95

THE OHIO CONFERENCE OF THE
UNITED CHURCH OF CHRIST
D.V. 584, P. 569
8.02 AC.

D.V. 564, P. 569

TWP. 19-R.18

J. T. ROBERTSON
10-29-99
OR-75667-727
014340814001
350.00
1717.9