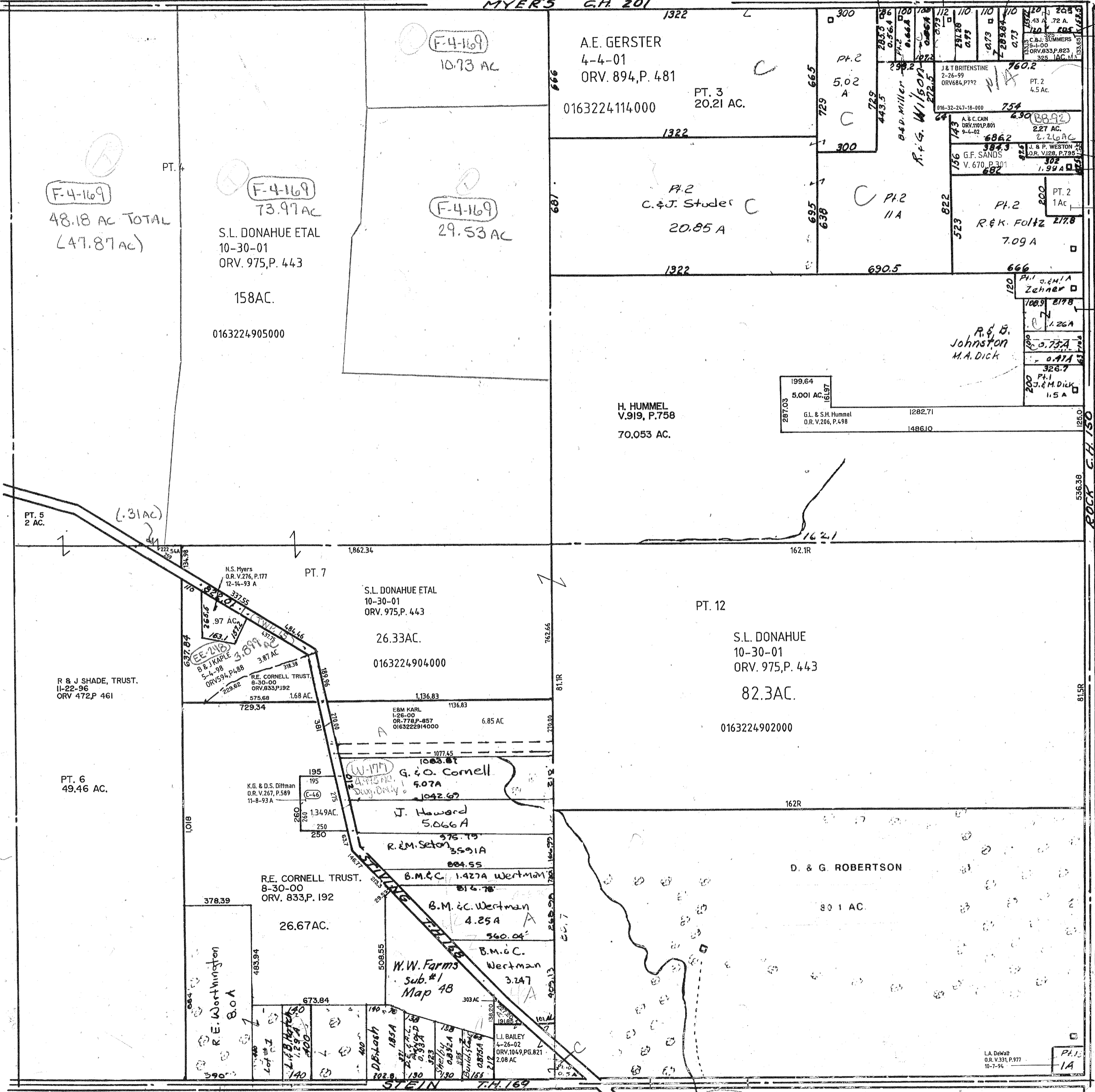


MYERS C.H. 201



F-4-169  
48.18 AC TOTAL  
(47.87 AC)

F-4-169  
73.97 AC  
S.L. DONAHUE ETAL  
10-30-01  
ORV. 975, P. 443  
158 AC.  
0163224905000

F-4-169  
29.53 AC

A.E. GERSTER  
4-4-01  
ORV. 894, P. 481  
PT. 3  
20.21 AC.  
0163224114000

PT. 2  
C. & J. Studer  
20.85 A

H. HUMMEL  
V.919, P.758  
70.053 AC.

PT. 12  
S.L. DONAHUE  
10-30-01  
ORV. 975, P. 443  
82.3 AC.  
0163224902000

R.E. CORNELL TRUST.  
8-30-00  
ORV. 833, P. 192  
26.67 AC.

G. & O. Cornell  
5.07 A

J. Howard  
5.066 A

B.M. & C. 1.427 A Wertman

B.M. & C. Wertman  
4.25 A

B.M. & C. Wertman  
3.247

W.W. Farms  
Sub. #1  
Map 4B

199.64  
5.001 AC.  
G.L. & S.H. Hummel  
O.R. V.206, P.498

R. & B. Johnston  
M.A. Dick

PT. 1  
J.E.M. Dick  
1.5 A

PT. 2  
1 Ac

PT. 1  
J.E.M. Dick  
1.5 A

PT. 1  
J.E.M. Dick  
1.5 A

PT. 1  
J.E.M. Dick  
1.5 A

PT. 1  
J.E.M. Dick  
1.5 A

PT. 1  
J.E.M. Dick  
1.5 A

PT. 1  
J.E.M. Dick  
1.5 A

PT. 1  
J.E.M. Dick  
1.5 A

PT. 1  
J.E.M. Dick  
1.5 A

PT. 1  
J.E.M. Dick  
1.5 A

PT. 1  
J.E.M. Dick  
1.5 A

PT. 1  
J.E.M. Dick  
1.5 A

PT. 1  
J.E.M. Dick  
1.5 A

PT. 1  
J.E.M. Dick  
1.5 A

PT. 1  
J.E.M. Dick  
1.5 A

PT. 1  
J.E.M. Dick  
1.5 A

PT. 1  
J.E.M. Dick  
1.5 A

PT. 1  
J.E.M. Dick  
1.5 A

PT. 1  
J.E.M. Dick  
1.5 A

PT. 1  
J.E.M. Dick  
1.5 A

PT. 1  
J.E.M. Dick  
1.5 A

PT. 1  
J.E.M. Dick  
1.5 A

PT. 1  
J.E.M. Dick  
1.5 A

PT. 1  
J.E.M. Dick  
1.5 A

PT. 1  
J.E.M. Dick  
1.5 A

D.E. ACKERMAN  
O.R. V.164, P.207  
6-8-92 C

dd-78  
dd-208  
D. Dabney  
O.R. V.289, P.461  
1-21-94

P. & J. FAGAN  
8-31-00  
ORV. 853, P. 492

L.A. DeWalt  
O.R. V.331, P.977  
10-7-94

Twp. 22-R. 19.

JACKSON TWP SEC. 28

9-5-02