

F M.C. COLE
4-26-02
ORV.1049,P.6774
1.10 AC

C E & S BARBER
D.V. 872P 365
1407 AC.

A J.&L. WILLIAMS
1-16-02
ORV.1010,P.300
0163222410004

E J. DEAN
10-12-01
ORV. 969,P. 427
0163222410012
(J-473) 1AC.

R.R SPIKE

IRON PIPE

J.L. & D.A. PERIN
ORV. 1209,P.143
2-14-13

M. SHEPHERD
ORV. 841,P. 163

J. M. SHEPHERD

K. M. BROWN
ORV. 207,P. 790

R.A. SIMON
ORV. 326,P. 149

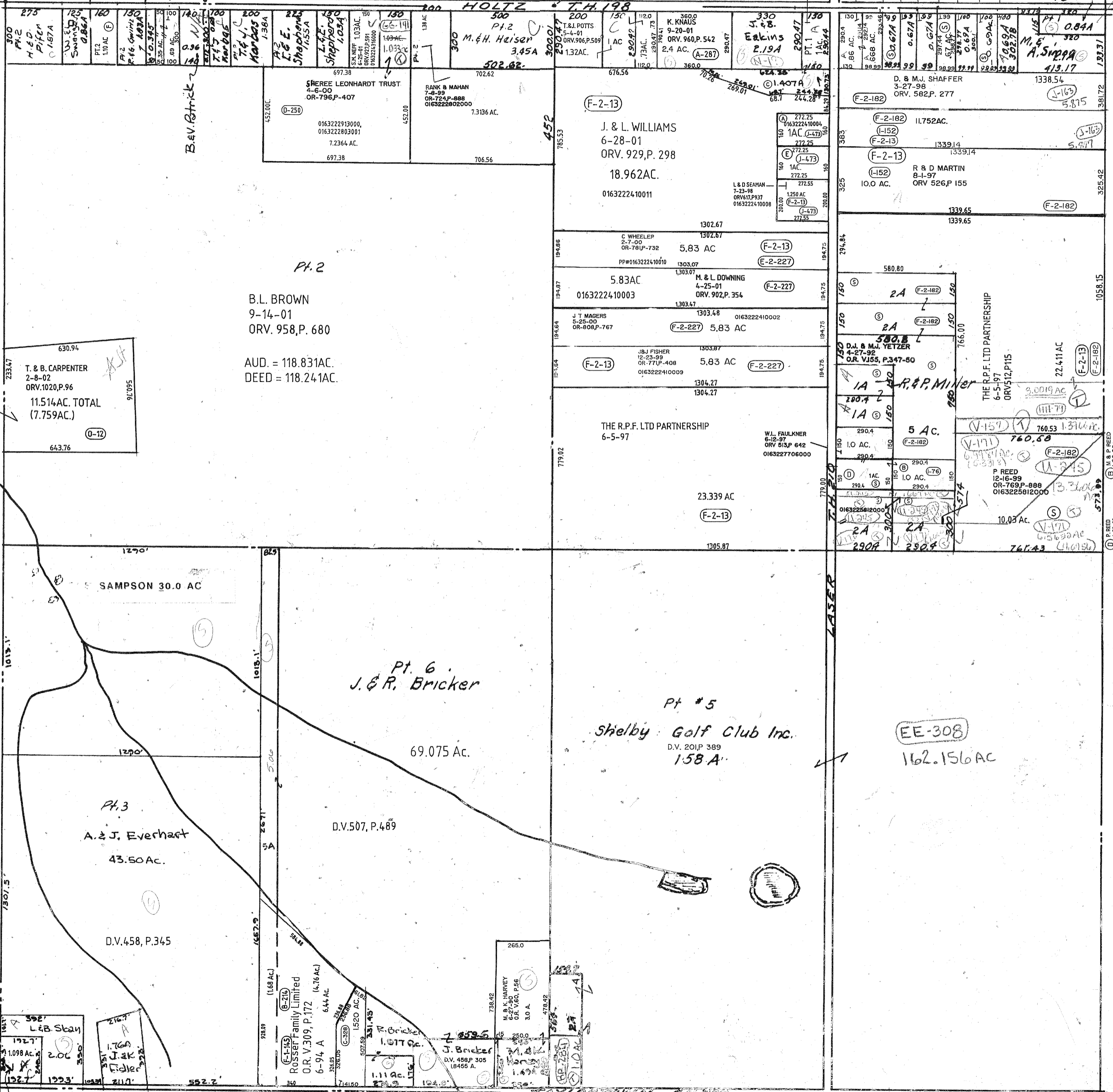
F. E. GREEN
ORV. 479,P. 840

K. B. D. TANOS

R. BAKER
ORV. 189,P. 478

J. E. COOKE

R. & A. Simon



Pt. 2
B.L. BROWN
9-14-01
ORV. 958,P. 680
AUD. = 118.831AC.
DEED = 118.241AC.

F-2-13
J. & L. WILLIAMS
6-28-01
ORV. 929,P. 298
18.962AC.
0163222410011

F-2-227
M. & L. DOWNING
4-25-01
ORV. 902,P. 354
5.83AC
0163222410003

F-2-13
THE R.P.F. LTD PARTNERSHIP
6-5-97
23.339 AC
0163222706000

Pt #5
Shelby Golf Club Inc.
D.V. 201P 389
158 A.

Pt. 6
J. & R. Bricker
69.075 Ac.
D.V. 507, P. 489

Pt. 3
A. & J. Everhart
43.50 Ac.
D.V. 458, P. 345

EE-308
162.156 AC

630.94
T. & B. CARPENTER
2-8-02
ORV. 1020,P.96
11.514AC. TOTAL
(7.759AC.)
643.76

0.071 AC IN SE QTR SECTS
L. & B. Skay
1.098 AC
2.06
1927
1923

Rosser Family Limited
O.R. V.309, P.172
6-94 A
6.44 AC

J. Bricker
D.V. 456P 305
18455 A.

M. TITCHENELL
5-4-8
ORV. 593, P. 839

G. S. FOUH
ORV. 254P 175
0163222685000

TWP. 22-R.19

JACKSON

TWP.

SEC. 14