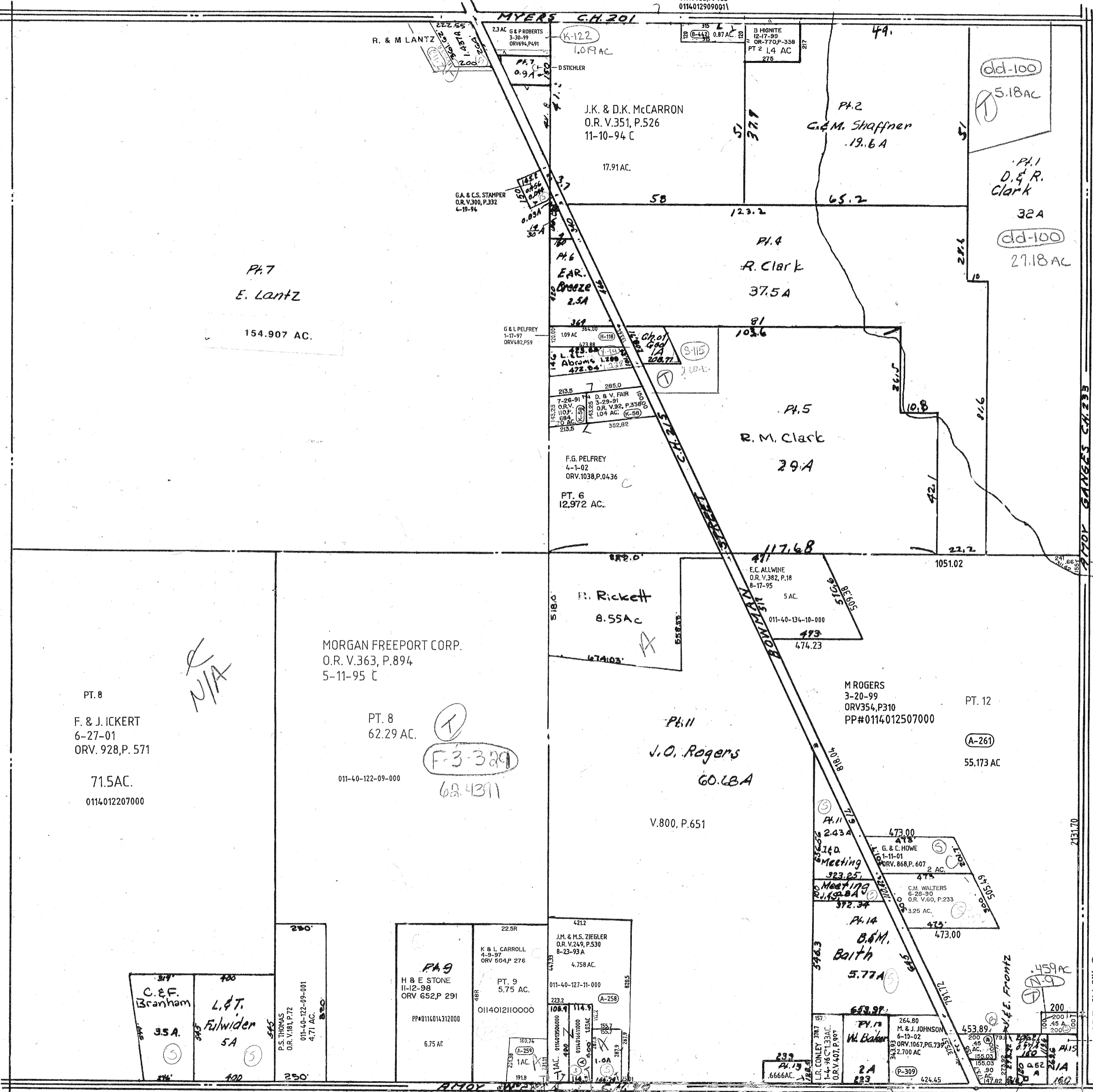


R.L. GLOVER
7-13-01
ORV. 935.P. 463
01140129090011

MYERS CH. 201



PT. 7
E. Lantz
154.907 AC.

J.K. & D.K. McCARRON
O.R. V.351, P.526
11-10-94 C
17.91 AC.

PT. 2
G.M. Shaffner
.19.6 A

dd-100
5.18 AC
PT. 1
D. & R. Clark
32 A
dd-100
27.18 AC

PT. 4
R. Clark
37.5 A

PT. 5
R. M. Clark
29. A

F. Rickett
8.55 AC

MORGAN FREEPORT CORP.
O.R. V.363, P.894
5-11-95 C

PT. 8
F. & J. ICKERT
6-27-01
ORV. 928.P. 571
71.5 AC.
0114012207000

PT. 8
62.29 AC.

F-3-329
68.4391

PT. 11
J.O. Rogers
60.68 A
V.800, P.651

M ROGERS
3-20-99
ORV354,P310
PP#0114012507000

PT. 12
(A-261)
55.173 AC

C. & F. Branham
35 A

L. & T. Fulwider
5 A

PT. 9
H & E STONE
11-12-98
ORV 652.P 291
PP#0114014312000
6.75 AC

PT. 9
K & L CARROLL
4-9-97
ORV 604.P 276
5.75 AC.

J.M. & M.S. ZIEGLER
O.R. V.249, P.530
8-23-93 A
4.758 AC.

Meeting
Meeting
Meeting
Meeting
Meeting

PT. 14
B.M. Baith
5.77 A

PT. 13
M. J. Johnson
6-19-02
ORV.1067, PG.73
32.700 AC

(A) J. & D. KIRSCHENHEITER
9-9-02
ORV.1104, PG.225

J.L. MESSER
10-16-01
ORV.970,P.509
0114012711001

M.L. BEER
9-20-01
ORV. 960.P. 695

FRANKLIN TWP. SEC. 30

9-10-02

T & A OWENS
8-11-98
ORV 633.P 922
.65 AC.
0114011418000

J.L. SMITH
2-7-98
ORV 570.P 399
.45 AC.
.30 AC.
01140111000

K KNIPP
6-9-00
ORV813,P156

CLAY MEMORIAL LUTHERAN CHURCH INC.
2-5-81
DV.812,P.225
0114013011000