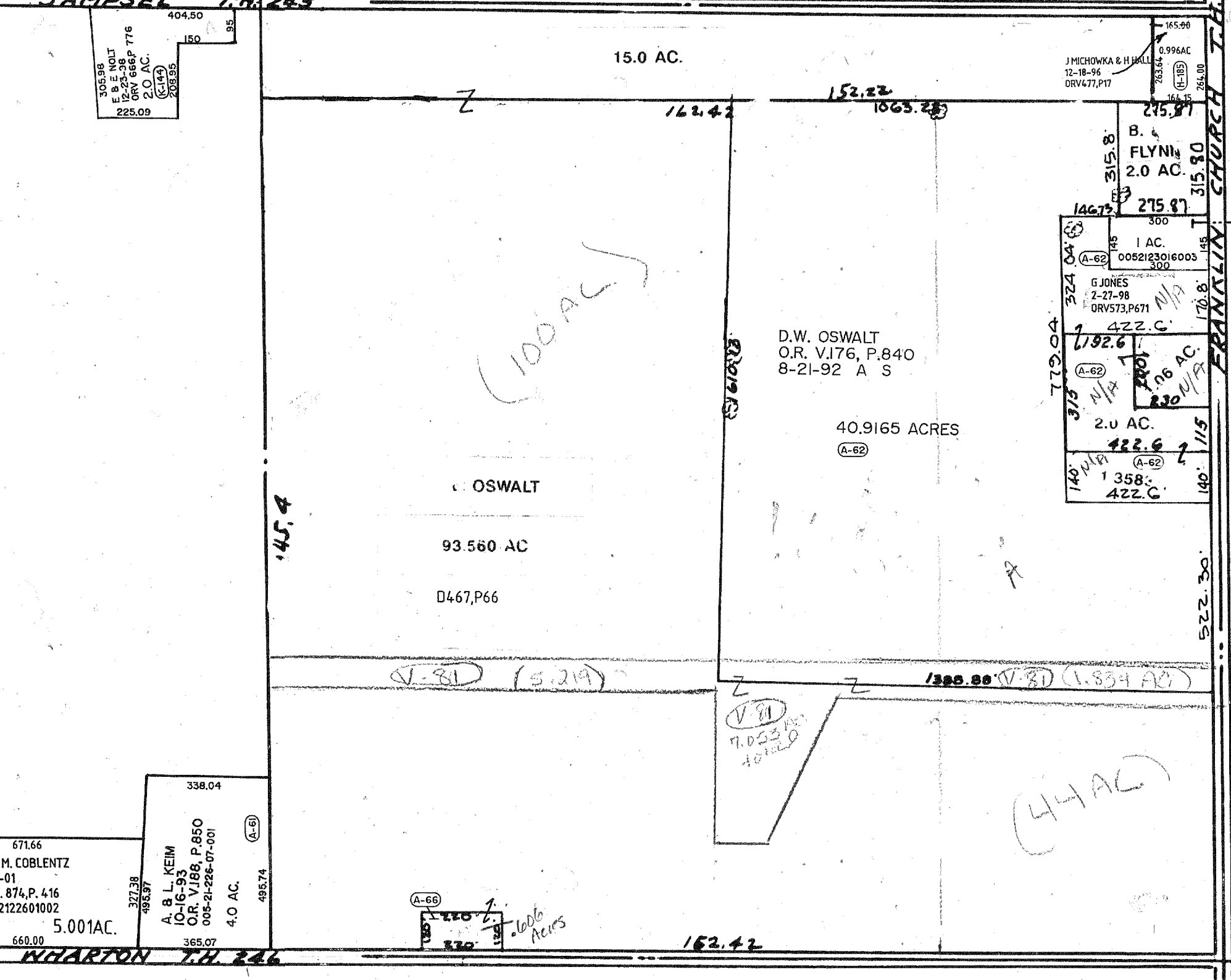
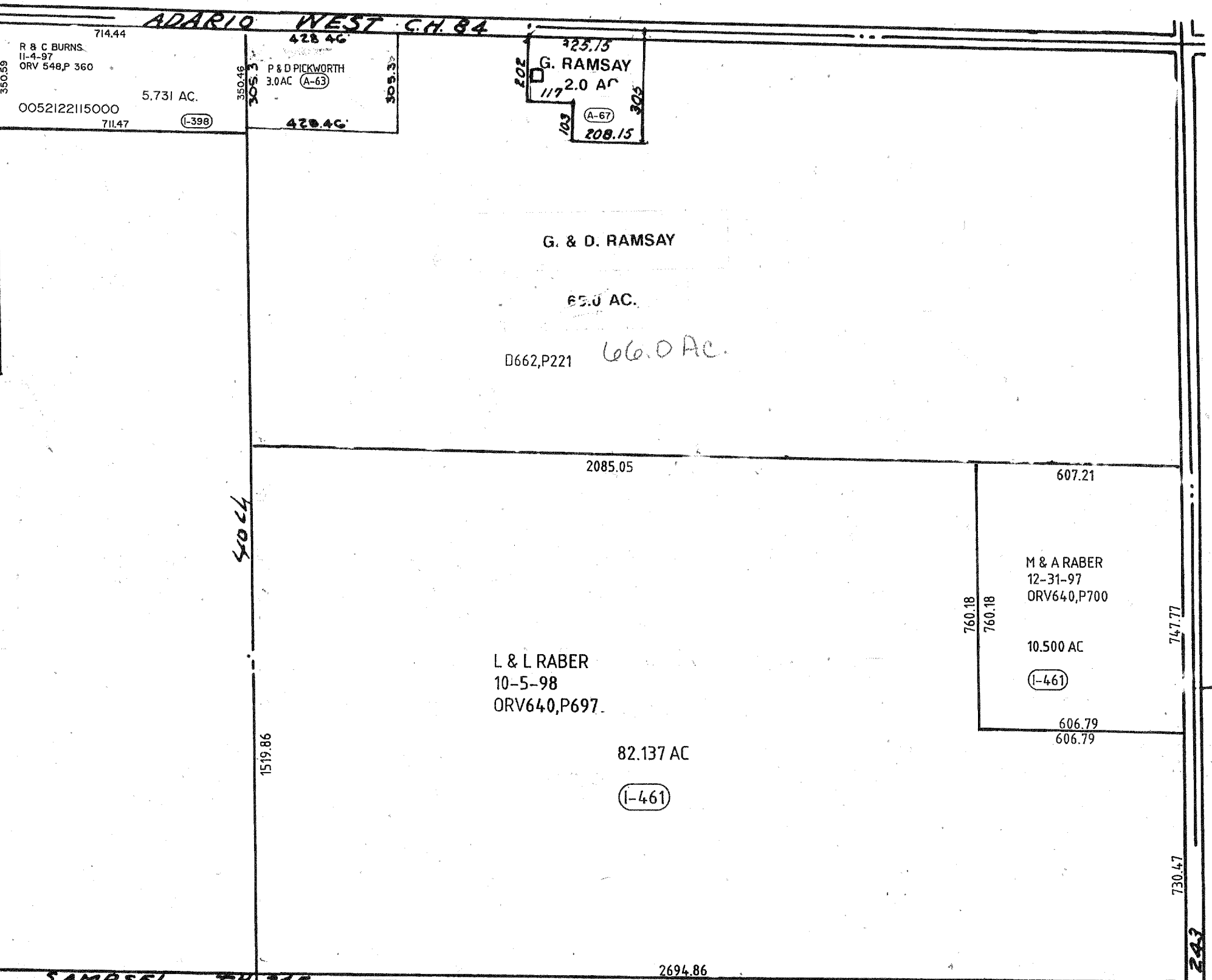
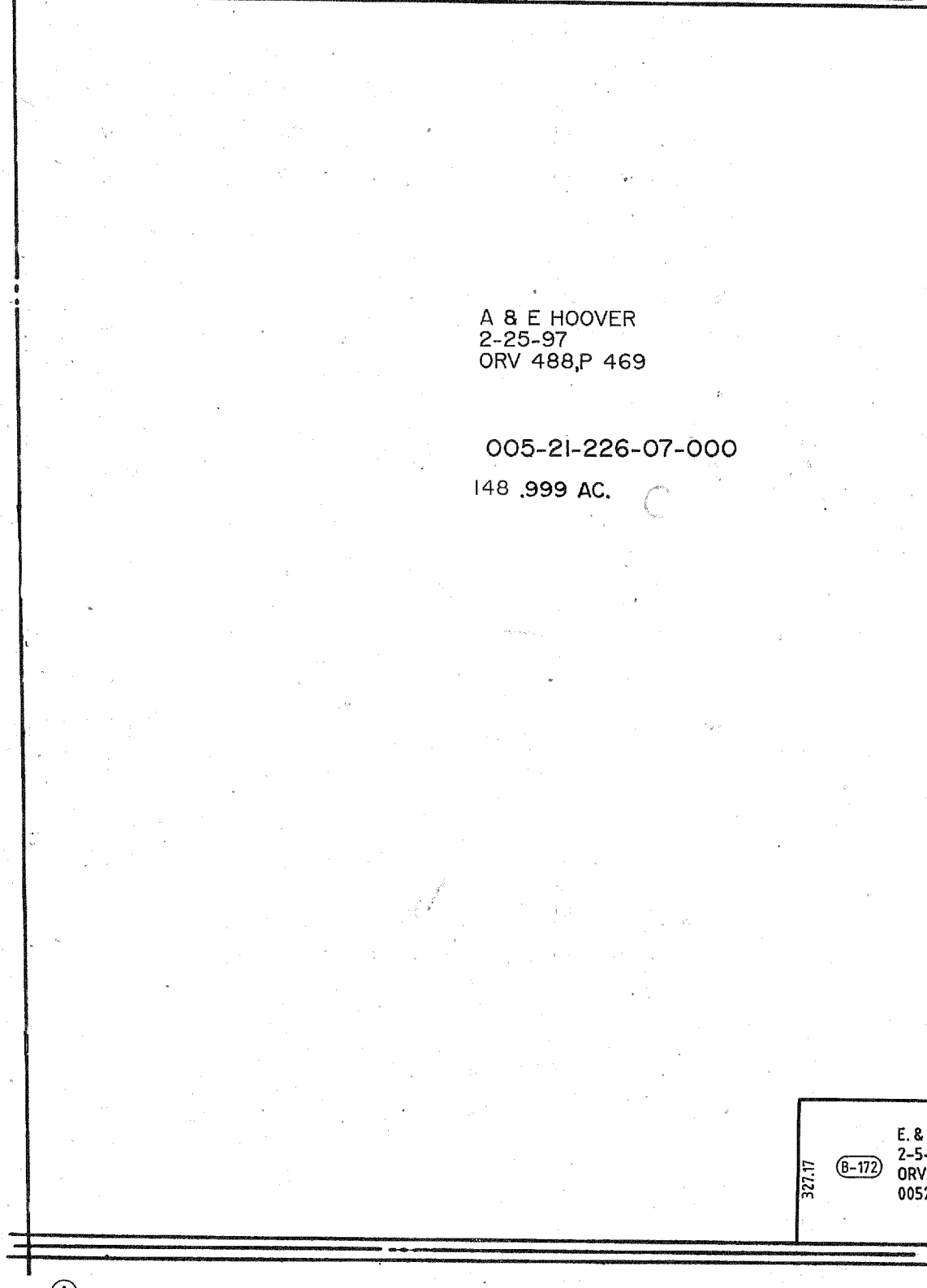
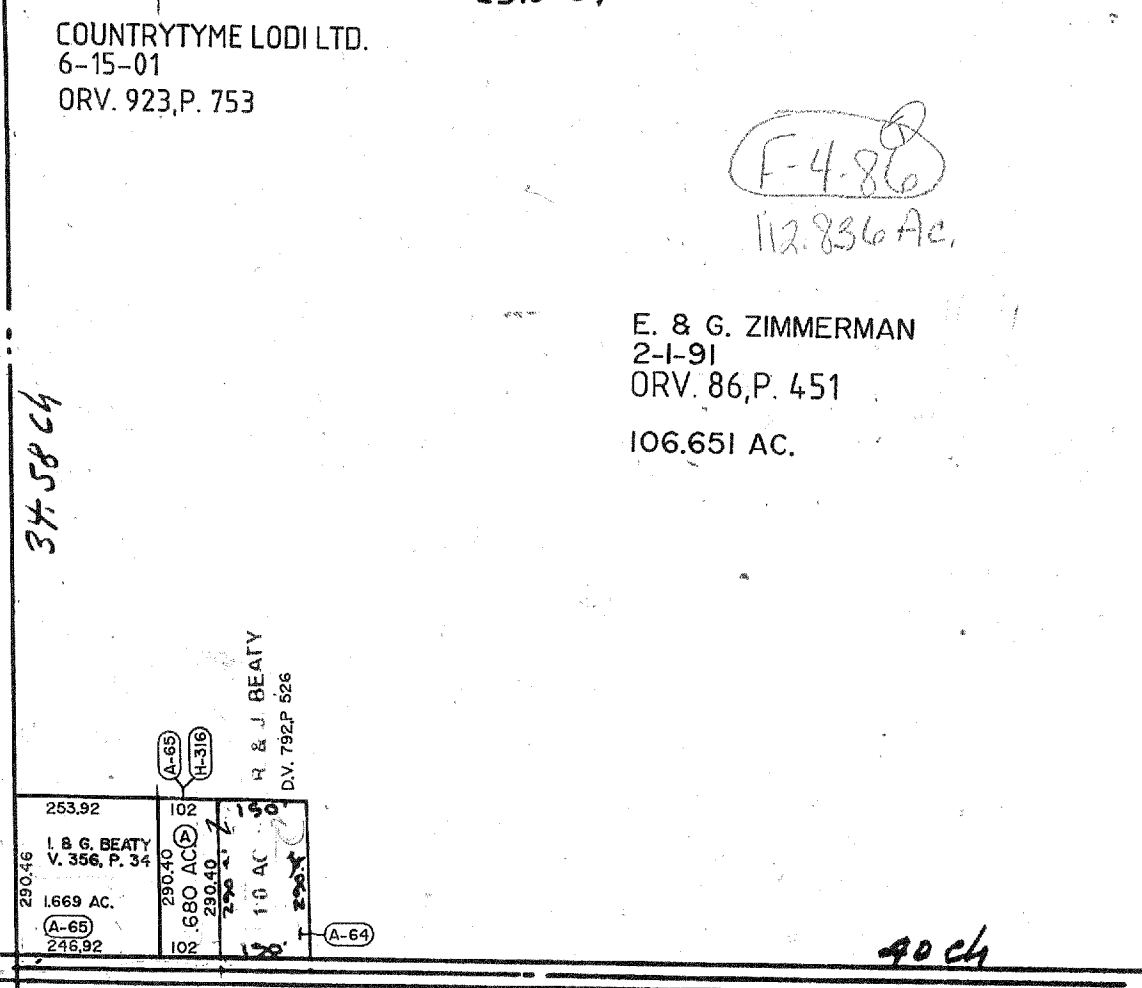
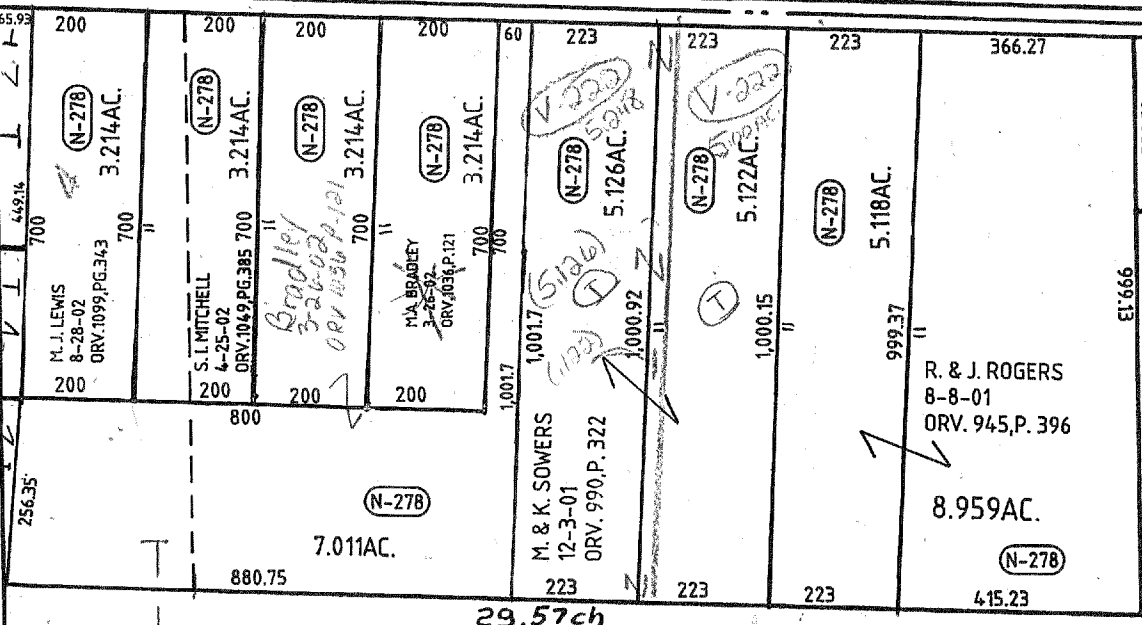


5.969 AC. TOTAL  
(576 AC.)  
(N-278)

A.B. MILLIGAN  
7-24-95  
ORV.377.P.34  
042 AC.  
(N-278)

B. & W. SHEPHERD  
3-29-02  
ORV.1038.P.170  
(N-278)



M & B MINNICH  
9-27-96  
ORV 461.P. 259  
N/A

FRANKLIN CHURCH T.H. 243

(A)  
R. & J. BEATY  
8-21-97  
ORV 530.P. 93  
.660 AC.

Twp. 23-R.18

BUTLER TWP. SEC. 26

8-29-02