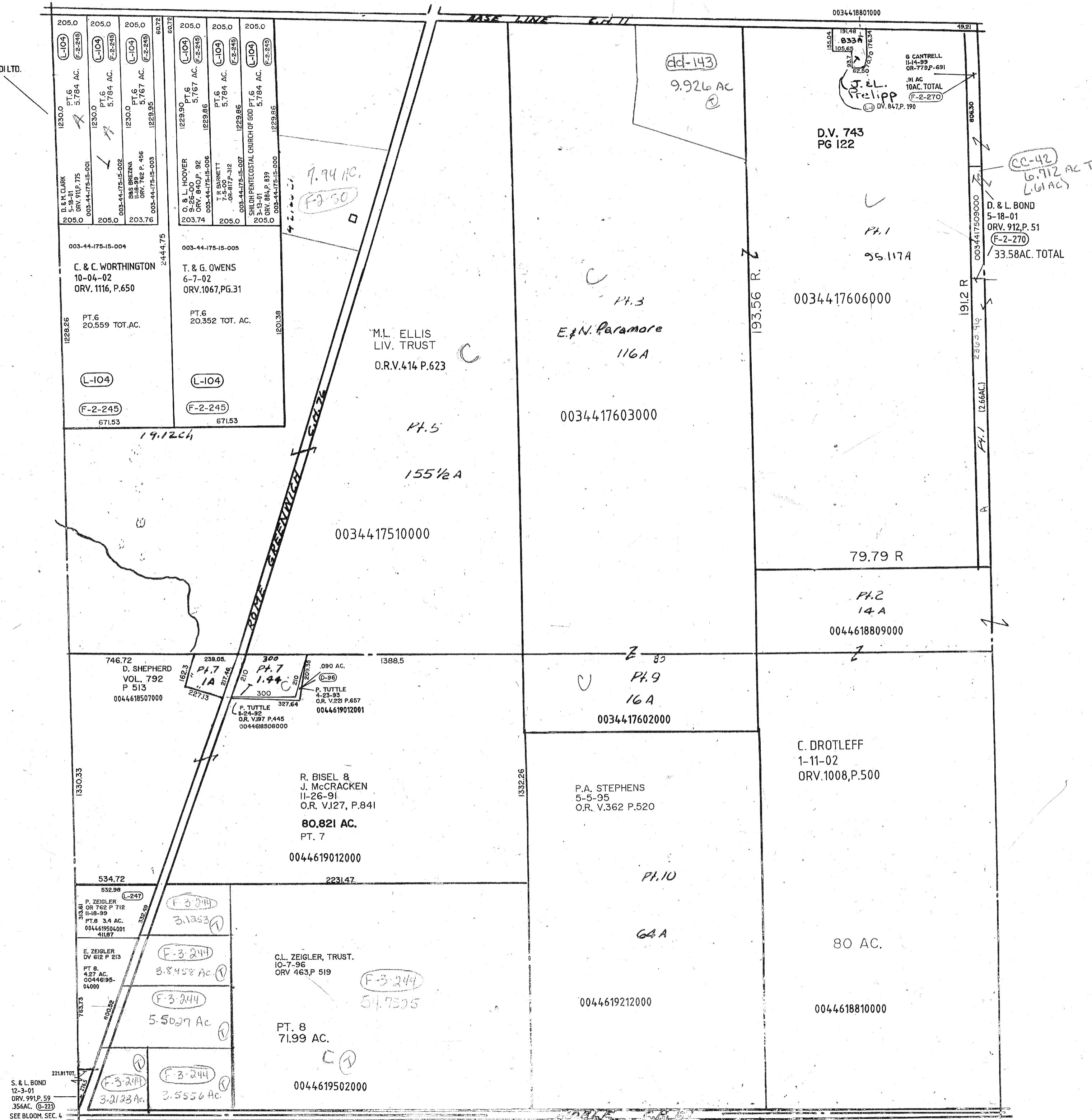


NOTE: SURVEY= .833AC.
 ALL LEGALS OF RECORDED= .883AC.
 AUD.= .883AC.
 WROTE LETTER TO SURVEYOR FOR
 ORIGINAL LEGAL 9-14-01
 CLOSURE= .83877AC. 005/010

COUNTRYME LODI LTD.
 9-16-99
 ORV. 745, P. 103



S. & L. BOND
 12-3-01
 ORV. 991 P. 59
 .356AC. (Q-22)
 SEE BLOOM. SEC. 4

CC-42
 6.712 AC TOTAL
 (.61 AC)

D. & L. BOND
 5-18-01
 ORV. 912, P. 51
 (F-2-270)
 33.58 AC. TOTAL

D.V. 743
 PG 122

PH. 1
 95.117A

PH. 3
 E. & N. Paramore
 116A

0034417603000

M.L. ELLIS
 LIV. TRUST
 O.R.V. 414 P. 623

PH. 5
 155 1/2 A

0034417510000

79.79 R

PH. 2
 14 A
 0044618809000

PH. 9
 16 A
 0034417602000

C. DROTLEFF
 1-11-02
 ORV. 1008, P. 500

P.A. STEPHENS
 5-5-95
 O.R. V. 362 P. 520

PH. 10
 60 A

80 AC.

0044619212000

0044618810000

R. BISEL &
 J. McCracken
 11-26-91
 O.R. V. 127, P. 841
 80.821 AC.
 PT. 7
 0044619012000

CL. ZEIGLER, TRUST.
 10-7-96
 ORV 463, P. 519

PT. 8
 71.99 AC.

0044619502000

534.72
 532.98
 P. ZEIGLER
 OR 762 P. 712
 11-16-99
 PT. 8 3.4 AC.
 0044619504001
 41187

E. ZEIGLER
 DV 612 P. 213
 PT. 8
 4.27 AC.
 00446195-
 04000

3.2123 AC
 3.5556 AC

3.2123 AC
 3.5556 AC

746.72
 D. SHEPHERD
 VOL. 792
 P 513
 0044618507000

239.05
 300
 1.94
 P. TUTTLE
 4-23-93
 O.R. V. 221 P. 657
 0044619012001

P. TUTTLE
 1-24-92
 O.R. V. 197 P. 445
 0044618508000

003-44-175-15-004
 C. & C. WORTHINGTON
 10-04-02
 ORV. 1116, P. 650
 PT. 6
 20.559 TOT. AC.
 (L-104)
 (F-2-245)
 671.53

003-44-175-15-005
 T. & G. OWENS
 6-7-02
 ORV. 1067, P. 631
 PT. 6
 20.352 TOT. AC.
 (L-104)
 (F-2-245)
 671.53

205.0
 D. S.H. CLARK
 5-18-01
 ORV. 912, P. 75
 003-44-175-15-001
 205.0
 (L-104)
 (F-2-245)
 607.2

205.0
 O. & L. HOOVER
 9-26-00
 ORV. 840, P. 92
 003-44-175-15-006
 203.74
 (L-104)
 (F-2-245)
 607.2

205.0
 T. R. BARNETT
 7-5-00
 OR. 817, P. 312
 003-44-175-15-007
 205.0
 (L-104)
 (F-2-245)
 607.2

205.0
 SHILOH PENTECOSTAL CHURCH OF GOD PT. 6
 3-13-01
 ORV. 884, P. 839
 003-44-175-15-000
 1229.86
 (L-104)
 (F-2-245)
 607.2

dd-143
 9.926 AC

0034418801000
 191.48
 105.65
 62.50
 70.70
 176.3
 G. CANTRELL
 11-14-99
 OR. 779, P. 691
 .91 AC
 10 AC. TOTAL
 (F-2-270)
 DV. 847, P. 190

191.2 R
 230.5
 19
 (2.66 AC)
 PH. 1
 A