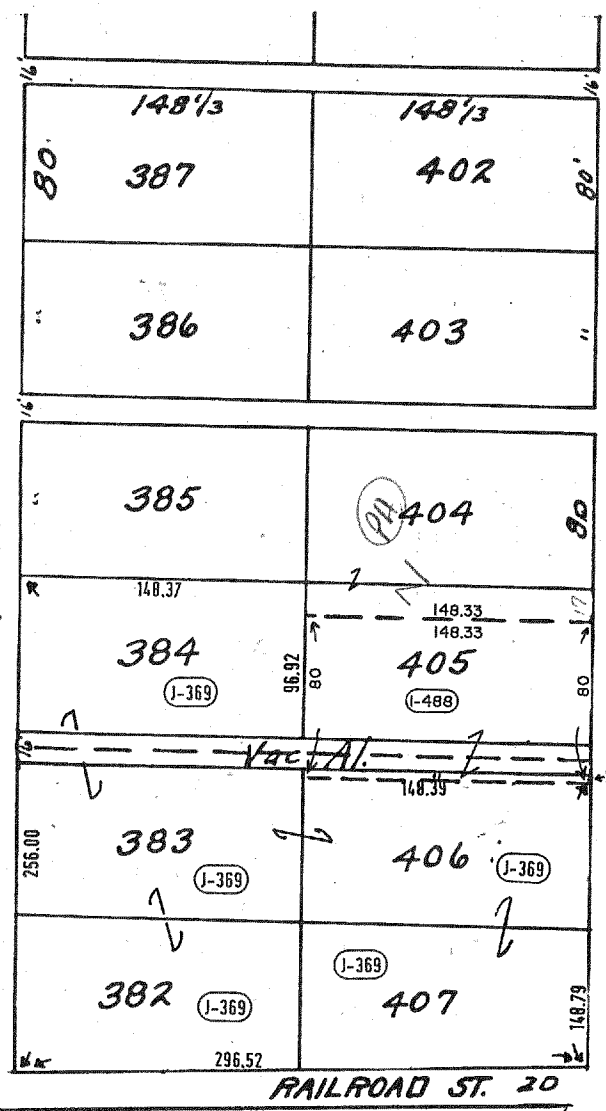
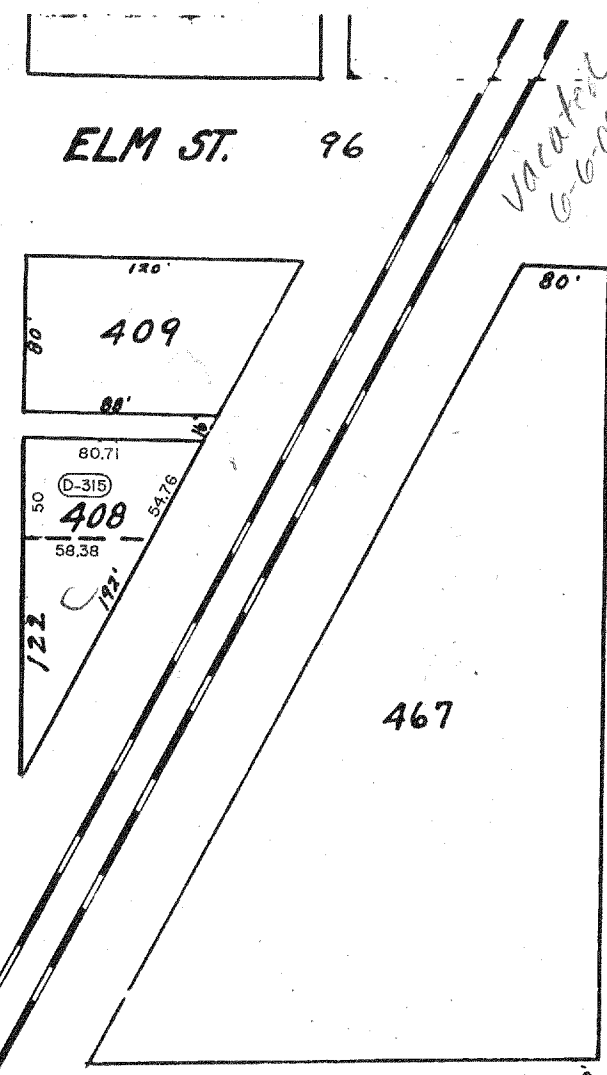


ASHLAND RAILWAY INC.  
8-7-98  
CRV 623.P 621

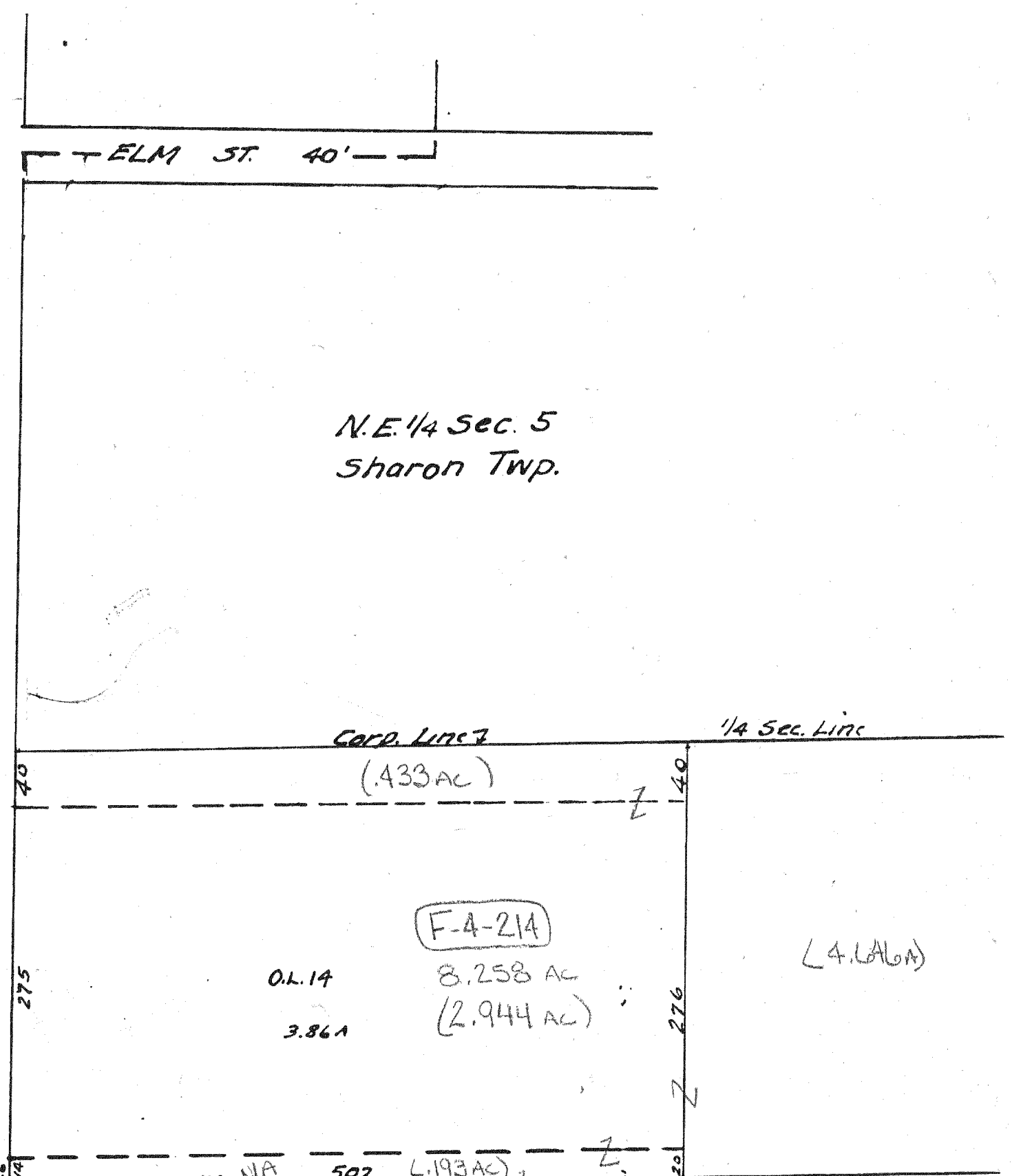
SANDUSKY ST. 40'



ELM ST. 96'



ELM ST. 40'



N.E. 1/4 Sec. 5  
Sharon Twp.

Corp. Line 7

1/4 Sec. Line

O.L. 40

O.L. 15

O.L. 14  
3.861

F-A-214

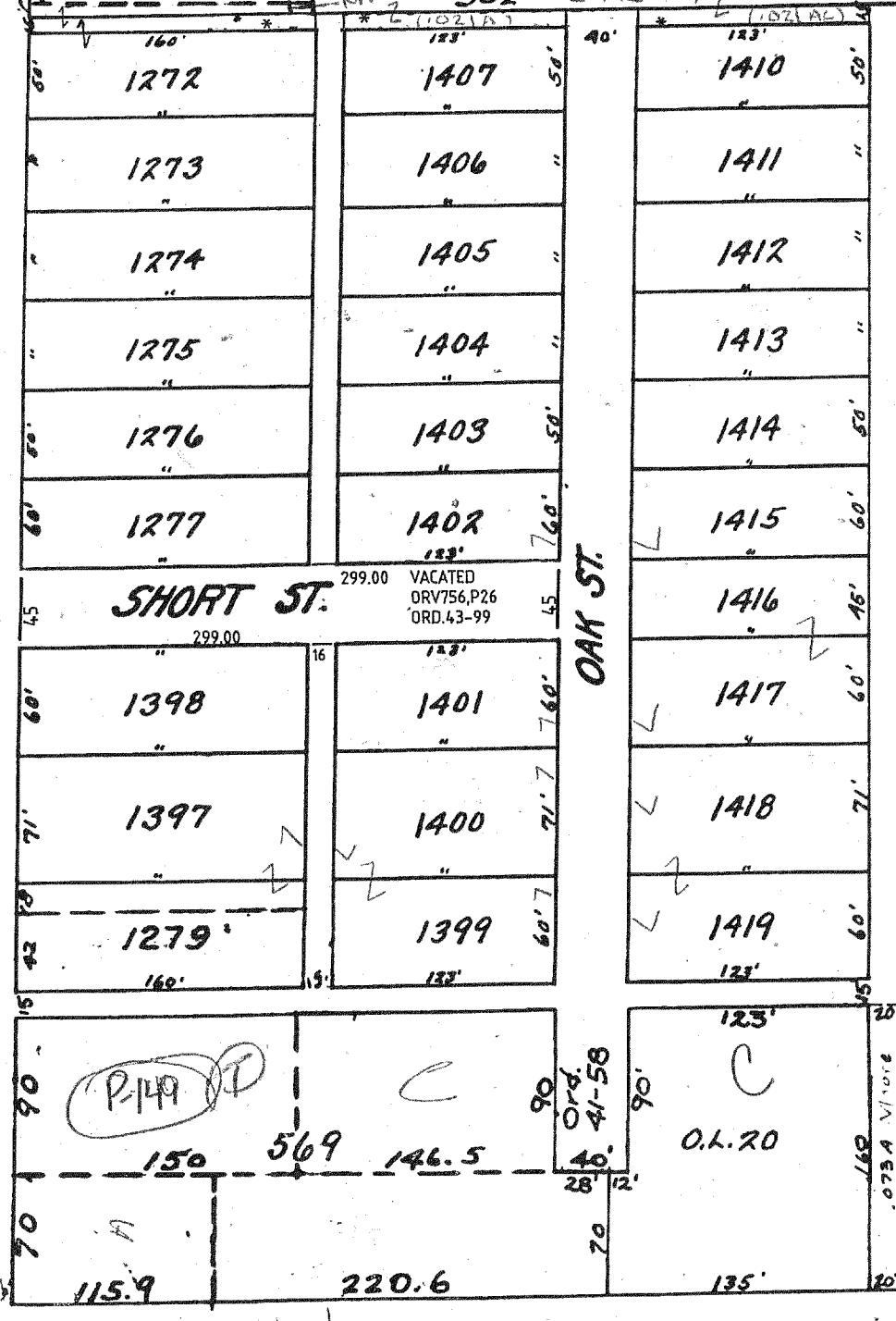
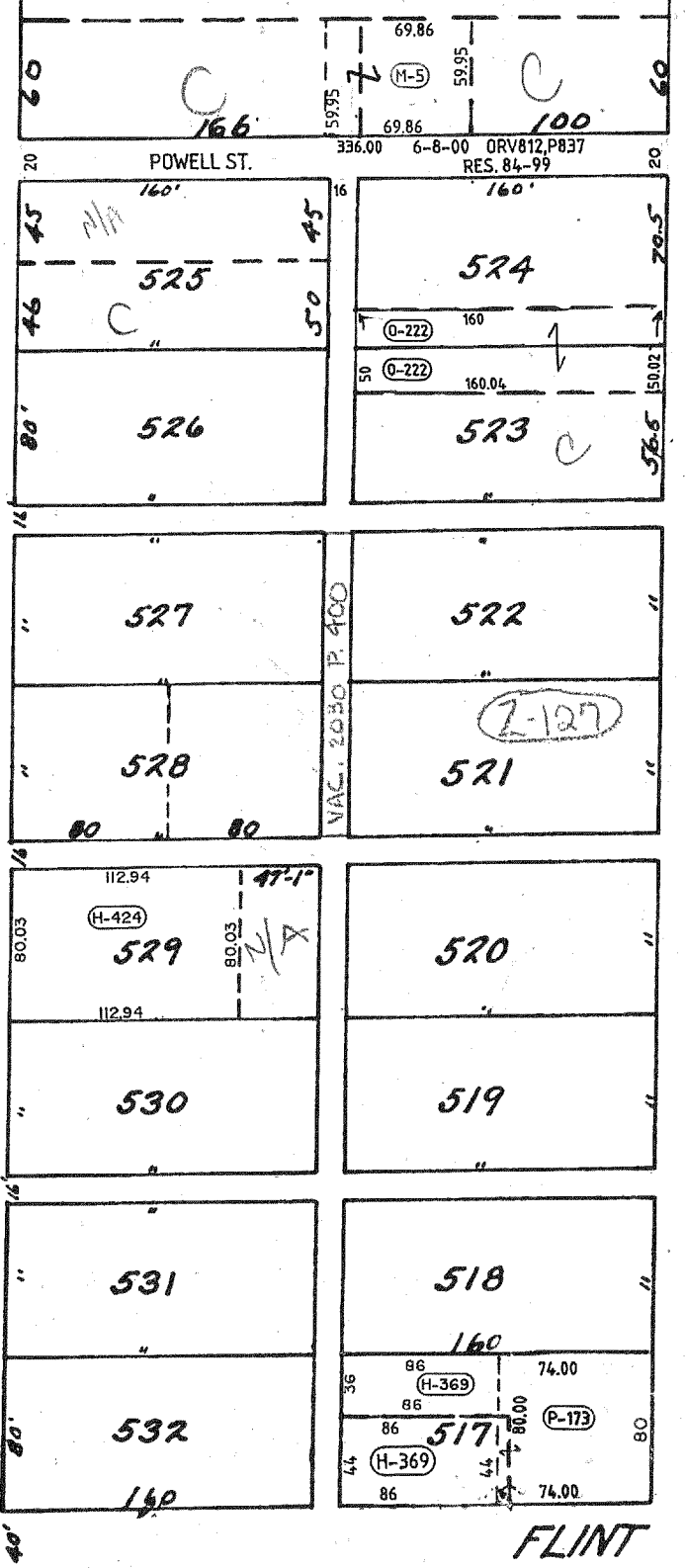
8.258 AC  
(2.944 AC)

(4.166 AC)

BROADWAY ST.

SECOND ST.

OAK ST.



\* VACATED 10-15-86  
ORD. 21-86  
DV. 884, P. 662

C.C.C. & St. Louis  
R.R. Co.

0460806711000

HH-266

FLINT ST.

SHELBY 15  
5-6-02