

RICHLAND COUNTY GEODETIC SURVEY MARKER

OHIO NORTH ZONE (3401)

POINT NUMBER: 10015A

R/T/S: 20-20-15 Jackson Twp; Crawford Co.

STATION NAME: 52

TYPE OF MARK: RR Spike

SET BY: Geometrics

STAMPING ON MARK: (none)

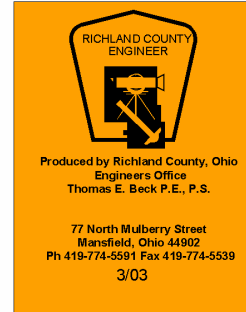
DATE SET: 1995.

METHOD OF SURVEY: GPS

FILE: 1995 Report, 2003 Report

COORDINATES BY: Geometrics

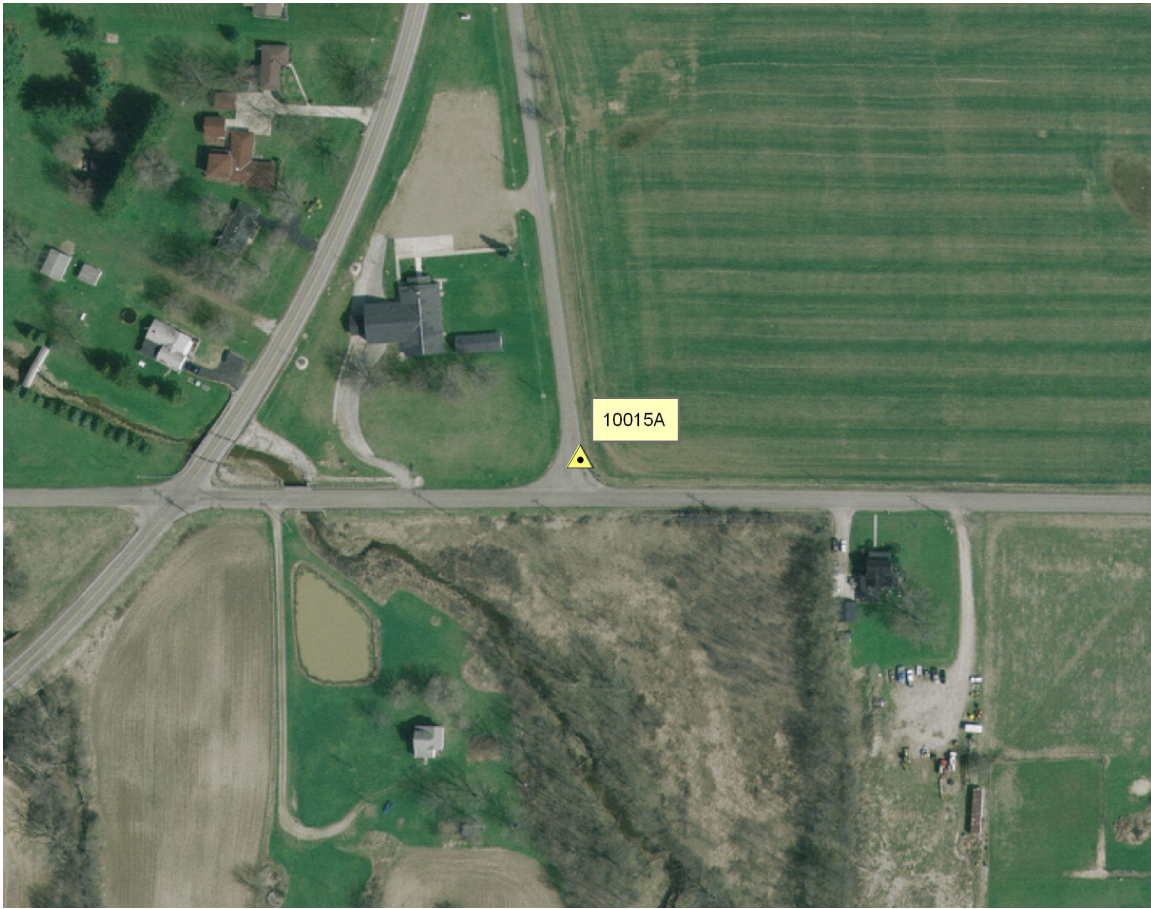
LOCATION: The station is located in Crawford County, Ohio about 2.5 miles NE of the City of Galion. To reach the station from the intersection of S.R. 61 and Middletown Road proceed east along Middletown Road, 500 feet to its intersection with McNeil Road. The station is on the left.



HORIZONTAL DATUM: NAD 83 (86)	HORIZONTAL ORDER: 2nd Class II
LATITUDE: 40 46 11.13031 N	LONGITUDE: 082 44 15.70856 W
SPC NORTH: 401971.402 US ft.	SPC EAST: 1902663.125 US ft.
SPC NORTH: 122521.128 m	SPC EAST: 579932.880 m
VERTICAL DATUM: NAVD88	VERTICAL ORDER: 3 rd
ELEVATION (METERS): 355.697	ELEVATION (US FT.): 1166.983
HORIZONTAL DATUM: NAD 83 (95)	HORIZONTAL ORDER: 2nd Class II
LATITUDE: 40 46 11.12458 N	LONGITUDE: 082 44 15.69529 W
SPC NORTH: 401970.820 US ft.	SPC EAST: 1902664.144 US ft.
SPC NORTH: 122520.951 m	SPC EAST: 579933.191 m
COMBINED FACTOR: 0.99990226	
Notes:	

RICHLAND COUNTY CONTROL POINTS

GENERAL LOCATION 2006 (Crawford County)



STATION SKETCH

